



Cattle on Feed

ISSN: 1948-9080

Released September 19, 2025, by the National Agricultural Statistics Service (NASS), Agricultural Statistics Board, United States Department of Agriculture (USDA).

United States Cattle on Feed Down 1 Percent

Cattle and calves on feed for the slaughter market in the United States for feedlots with capacity of 1,000 or more head totaled 11.1 million head on September 1, 2025. The inventory was 1 percent below September 1, 2024.

Placements in feedlots during August totaled 1.78 million head, 10 percent below 2024. Net placements were 1.73 million head. During August, placements of cattle and calves weighing less than 600 pounds were 355,000 head, 600-699 pounds were 265,000 head, 700-799 pounds were 390,000 head, 800-899 pounds were 420,000 head, 900-999 pounds were 260,000 head, and 1,000 pounds and greater were 90,000 head.

Marketings of fed cattle during August totaled 1.57 million head, 14 percent below 2024. Marketings were the lowest for August since the series began in 1996.

Other disappearance totaled 51,000 head during August, 6 percent below 2024.

Cattle on Feed Inventory, Placements, Marketings, and Other Disappearance on 1,000+ Capacity Feedlots – United States: September 1, 2024 and 2025

Item	2024	2025	Percent of previous year
	(1,000 head)	(1,000 head)	(percent)
On feed August 1	11,095	10,922	98
Placed on feed during August	1,976	1,780	90
Fed cattle marketed during August	1,819	1,571	86
Other disappearance during August	54	51	94
On feed September 1	11,198	11,080	99

Cattle on Feed Inventory, Placements, Marketings, and Other Disappearance on 1,000+ Capacity Feedlots – United States: August 1, 2024 and 2025

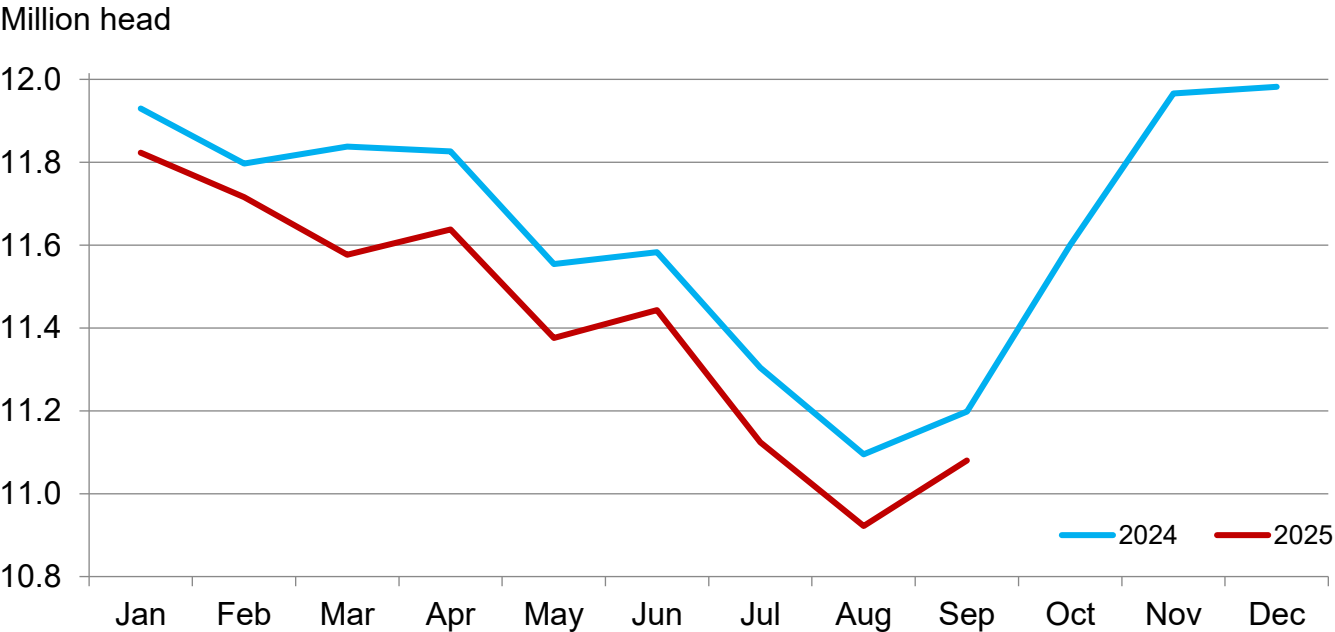
Item	2024	2025	Percent of previous year
	(1,000 head)	(1,000 head)	(percent)
On feed July 1	11,304	11,124	98
Placed on feed during July	1,702	1,598	94
Fed cattle marketed during July	1,855	1,749	94
Other disappearance during July	56	51	91
On feed August 1	11,095	10,922	98

Cattle on Feed Inventory on 1,000+ Capacity Feedlots by Month – States and United States: 2024 and 2025

State	September 1, 2024	August 1, 2025	September 1, 2025		
			Inventory	Percent of previous year	Percent of previous month
	(1,000 head)	(1,000 head)	(1,000 head)	(percent)	(percent)
Arizona	233	222	220	94	99
California	520	475	475	91	100
Colorado	970	880	890	92	101
Idaho	315	325	330	105	102
Iowa	660	690	690	105	100
Kansas	2,280	2,270	2,350	103	104
Minnesota	95	(NA)	(NA)	(NA)	(NA)
Nebraska	2,320	2,390	2,430	105	102
Oklahoma	330	310	315	95	102
South Dakota	185	190	195	105	103
Texas	2,750	2,490	2,500	91	100
Washington	245	255	265	108	104
Other States	295	425	420	142	99
United States	11,198	10,922	11,080	99	101

(NA) Not available.

Cattle on Feed Inventory on 1,000+ Capacity Feedlots – United States

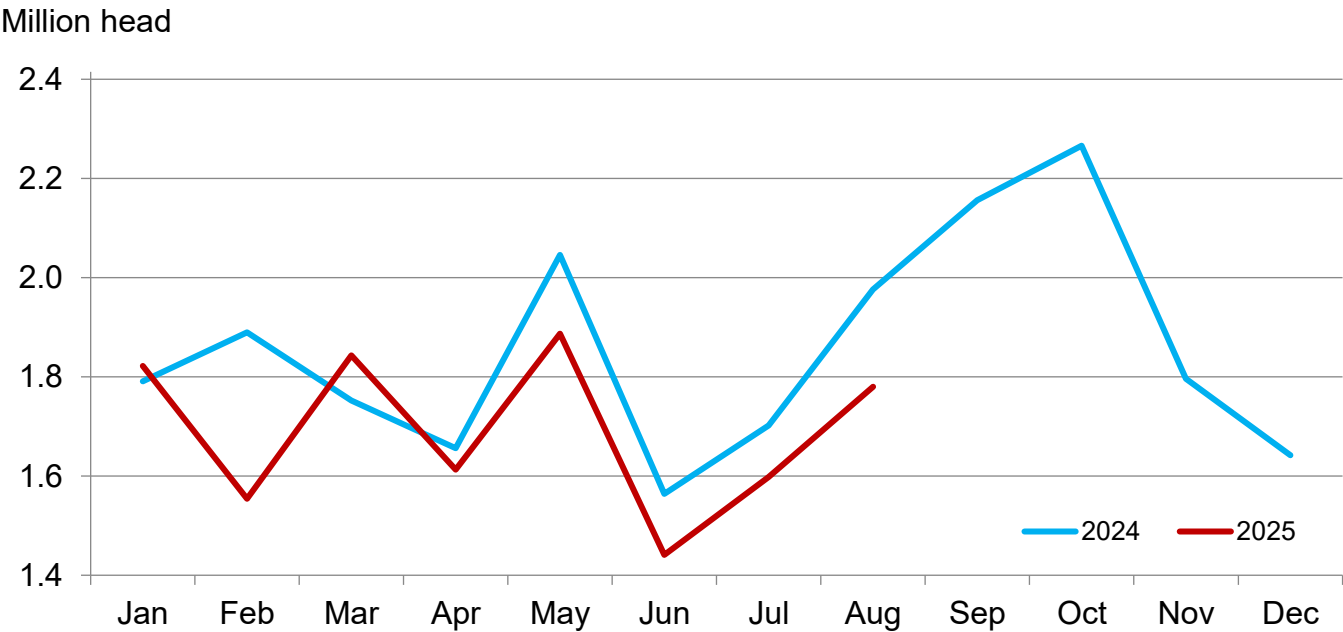


**Cattle Placed on Feed on 1,000+ Capacity Feedlots by Month – States and United States:
2024 and 2025**

State	During August 2024	During July 2025	During August 2025		
			Placements	Percent of previous year	Percent of previous month
	(1,000 head)	(1,000 head)	(1,000 head)	(percent)	(percent)
Arizona	15	17	18	120	106
California	61	53	51	84	96
Colorado	155	110	140	90	127
Idaho	50	38	45	90	118
Iowa	75	66	65	87	98
Kansas	535	435	475	89	109
Minnesota	10	(NA)	(NA)	(NA)	(NA)
Nebraska	495	440	475	96	108
Oklahoma	50	41	49	98	120
South Dakota	30	22	28	93	127
Texas	415	290	340	82	117
Washington	36	33	41	114	124
Other States	49	53	53	108	100
United States	1,976	1,598	1,780	90	111

(NA) Not available.

**Cattle Placed on 1,000+ Capacity
Feedlots – United States**



Cattle Placed on Feed by Weight Group on 1,000+ Capacity Feedlots and Month – States and United States: 2024 and 2025

State	During August 2024							
	Under 600 lbs	600-699 lbs	700-799 lbs	800-899 lbs	900+ lbs ¹	900-999 lbs	1,000+ lbs	Total
	(1,000 head)	(1,000 head)	(1,000 head)	(1,000 head)	(1,000 head)	(1,000 head)	(1,000 head)	(1,000 head)
Colorado	25	30	30	40	30	(D)	(D)	155
Kansas	65	95	160	140	75	(D)	(D)	535
Nebraska	40	45	95	150	165	(D)	(D)	495
Texas	175	95	80	50	15	(D)	(D)	415
Other States ...	90	40	70	101	75	(D)	(D)	376
United States ..	395	305	435	481	(X)	270	90	1,976

State	During July 2025							
	Under 600 lbs	600-699 lbs	700-799 lbs	800-899 lbs	900+ lbs ¹	900-999 lbs	1,000+ lbs	Total
	(1,000 head)	(1,000 head)	(1,000 head)	(1,000 head)	(1,000 head)	(1,000 head)	(1,000 head)	(1,000 head)
Colorado	20	20	25	25	20	(D)	(D)	110
Kansas	60	75	130	110	60	(D)	(D)	435
Nebraska	40	50	95	135	120	(D)	(D)	440
Texas	130	60	55	30	15	(D)	(D)	290
Other States ...	90	40	60	78	55	(D)	(D)	323
United States ..	340	245	365	378	(X)	195	75	1,598

State	During August 2025							
	Under 600 lbs	600-699 lbs	700-799 lbs	800-899 lbs	900+ lbs ¹	900-999 lbs	1,000+ lbs	Total
	(1,000 head)	(1,000 head)	(1,000 head)	(1,000 head)	(1,000 head)	(1,000 head)	(1,000 head)	(1,000 head)
Colorado	25	25	25	35	30	(D)	(D)	140
Kansas	55	80	150	120	70	(D)	(D)	475
Nebraska	40	45	90	140	160	(D)	(D)	475
Texas	145	75	65	40	15	(D)	(D)	340
Other States ...	90	40	60	85	75	(D)	(D)	350
United States ..	355	265	390	420	(X)	260	90	1,780

(D) Withheld to avoid disclosing data for individual operations.

(X) Not applicable.

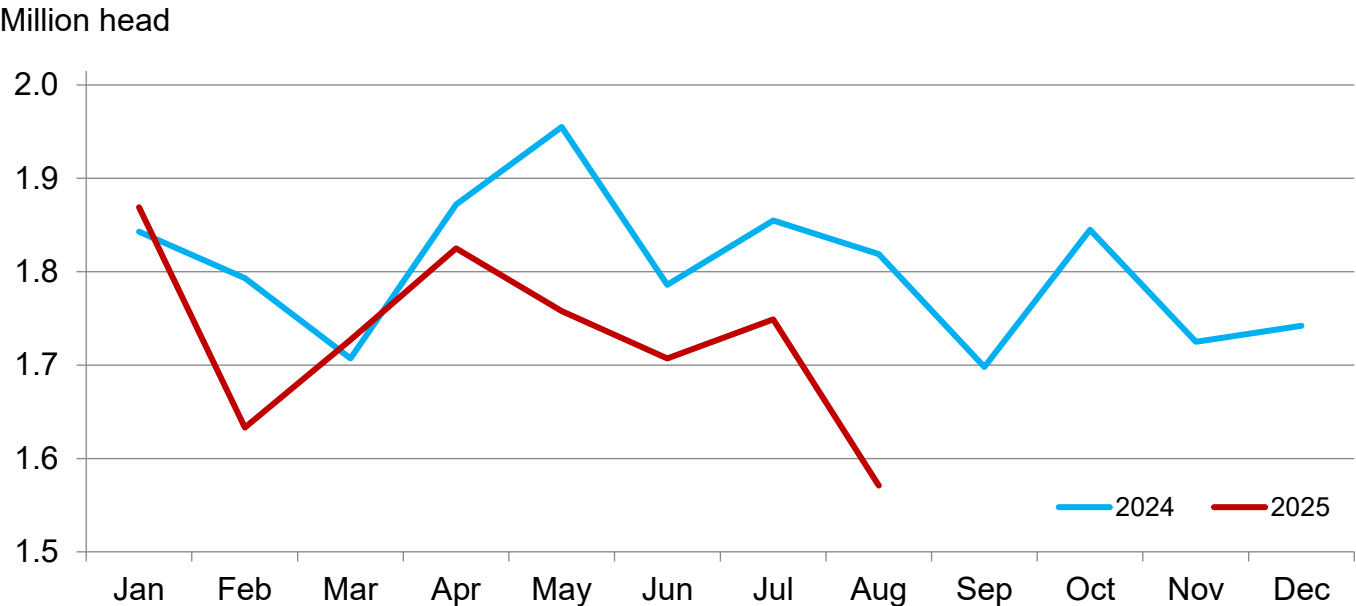
¹ The 900 pounds and greater weight group is the sum of 900-999 pounds and 1,000 pounds and greater weight groups.

Cattle Marketed on 1,000+ Capacity Feedlots by Month – States and United States: 2024 and 2025

State	During August 2024	During July 2025	During August 2025		
			Marketings	Percent of previous year	Percent of previous month
	(1,000 head)	(1,000 head)	(1,000 head)	(percent)	(percent)
Arizona	21	23	19	90	83
California	55	57	45	82	79
Colorado	140	125	125	89	100
Idaho	44	42	39	89	93
Iowa	64	65	63	98	97
Kansas	455	425	385	85	91
Minnesota	14	(NA)	(NA)	(NA)	(NA)
Nebraska	485	480	425	88	89
Oklahoma	44	50	43	98	86
South Dakota	34	35	22	65	63
Texas	390	360	320	82	89
Washington	30	32	30	100	94
Other States	43	55	55	128	100
United States	1,819	1,749	1,571	86	90

(NA) Not available.

Cattle Marketed on 1,000+ Capacity Feedlots – United States



Cattle Other Disappearance on 1,000+ Capacity Feedlots by Month – States and United States: 2024 and 2025

State	During August 2024	During July 2025	During August 2025		
			Other disappearance	Percent of previous year	Percent of previous month
	(1,000 head)	(1,000 head)	(1,000 head)	(percent)	(percent)
Arizona	1	1	1	100	100
California	6	6	6	100	100
Colorado	5	5	5	100	100
Idaho	1	1	1	100	100
Iowa	1	1	2	200	200
Kansas	10	10	10	100	100
Minnesota	1	(NA)	(NA)	(NA)	(NA)
Nebraska	10	10	10	100	100
Oklahoma	1	1	1	100	100
South Dakota	1	2	1	100	50
Texas	15	10	10	67	100
Washington	1	1	1	100	100
Other States	1	3	3	300	100
United States	54	51	51	94	100

(NA) Not available.

Terms and Definitions of Cattle on Feed Estimates

Cattle on feed are steers and heifers being fed a ration of grain, silage, hay and/or protein supplement for slaughter market that are expected to produce a carcass that will grade select or better. It excludes cattle being "backgrounded only" for later sale as feeders or later placement in another feedlot.

Placements are steers and heifers put into a feedlot, fed a ration which will produce a carcass that will grade select or better, and are intended for the slaughter market.

Marketings are steers and heifers shipped out of feedlots to a slaughter market.

Other disappearance includes death loss, movement from feedlots to pasture, and shipments to other feedlots for further feeding.

Statistical Methodology

Survey Procedures: During January and July all known feedlots in the United States with capacity of 1,000 or more head are surveyed to provide data for cattle on feed estimates. During the other months, all known feedlots from 16 States are surveyed. The 16 States account for approximately 98 percent of the cattle on feed in feedlots with capacity of 1,000 or more head. Individual State estimates are published monthly for 11 of the 16 States. In 2025, data collected from the remaining 5 States are used to establish the "Other States" estimates. These 5 States include Illinois, New Mexico, Oregon, Wyoming and in 2025, Minnesota was added. The "Other States" category represents all cattle on feed with a capacity of 1,000 or more head for the rest of the United States.

Estimating Procedures: These cattle on feed estimates were prepared by the Agricultural Statistics Board after reviewing recommendations and analysis submitted by Regional Field Offices. Regional and State survey data were reviewed for reasonableness with each other and with estimates from the previous month when establishing the current estimates.

Revision Policy: Revisions to previous estimates are made to improve month to month relationships. Estimates for the previous month are subject to revision in all States each month when current estimates are made. In February, all monthly estimates for the previous year, and the number of feedlots and annual marketings from two years ago are reviewed and subject to revisions. The reviews are primarily based on slaughter data, state check-off or brand data, and any other data that may have been received after the original estimate was made. Estimates will also be reviewed after data from the *Census of Agriculture* are available. No revisions will be made after that date and estimates become final.

Reliability: Since all 1,000+ capacity cattle on feed operators in every State are not included in the monthly survey, survey estimates are subject to sampling variability. Survey results are also subject to non-sampling errors such as omissions, duplications, and mistakes in reporting, recording, and processing the data. The effects of these errors cannot be measured directly. They are minimized through rigid quality controls in the data collection process and through a careful review of all reported data for consistency and reasonableness.

To assist users in evaluating the reliability of estimates in this report, the "**Root Mean Square Error**" is shown for selected items in the table on the following page. The "Root Mean Square Error" is a statistical measure based on past performance and is computed using the differences between first and latest estimates. The "Root Mean Square Error" for cattle on feed inventory estimates over the past 24 months is 0.1 percent. This means that chances are 2 out of 3 that the final estimate will not be above or below the current estimate of 11.1 million head by more than 0.1 percent. Chances are 9 out of 10 that the difference will not exceed 0.2 percent.

The table on the following page shows a 24-month record of the range of differences between first and latest estimates for selected items. Using estimates of number on feed as an example, changes between the first estimate and the latest estimate during the past 24 months have averaged 5,000 head, ranging from 0 to 33,000 head. During this period the initial estimate has been above the latest estimate 1 time and has been below the latest estimate 6 times. This does not imply that the initial estimate is likely to understate or overstate final inventory.

Reliability of Monthly Cattle on Feed Estimates

[Based on data for the past 24 months]

Item	Root mean square error	90 percent confidence level	Difference between first and latest estimate				
			Average	Smallest	Largest	Months	
						Below latest	Above latest
	(percent)	(percent)	(1,000)	(1,000)	(1,000)	(number)	(number)
On feed	0.1	0.2	5	0	33	6	1
Placements	0.2	0.4	2	0	20	5	5
Marketings	0.1	0.1	1	0	5	6	2

Information Contacts

Listed below are the commodity specialists in the Livestock Branch of the National Agricultural Statistics Service to contact for additional information. E-mail inquiries may be sent to nass@usda.gov.

Travis Averill, Chief, Livestock Branch	(202) 692-0069
Sherry Bertramsen – Livestock Slaughter	(202) 690-8632
Tiffany Byrne – Dairy Products.....	(651) 440-7789
Ryan Cowen – Cattle, Cattle on Feed.....	(202) 720-3040
Kim DaPra – Milk Production	(202) 720-3278
Fatema Haque – Poultry Slaughter, Turkey Hatchery, Turkeys Raised	(202) 720-3244
Derron Martin – Catfish, Census of Aquaculture, Egg Products, Mink, Trout	(202) 690-3237
Ralph Mondesir – Hogs and Pigs	(202) 720-3106
Suzanne Richards – Cost of Pollination, Honey, Honey Bee Colonies, Sheep and Goats	(202) 720-4448
Shulonda Shaw – Capacity of Refrigerated Warehouses, Cold Storage.....	(202) 720-3240
Autumn Stone – Layers, Eggs	(202) 690-3676
Takiyah Walker – Broiler Hatchery, Chicken Hatchery	(202) 720-6147

Access to NASS Reports

For your convenience, you may access NASS reports and products the following ways:

- All reports are available electronically, at no cost, on the NASS web site: www.nass.usda.gov.
- The national specific reports are available via a free e-mail subscription. To set-up this free subscription, visit www.nass.usda.gov and click on “National” in upper right corner above “search” box to create an account and select the reports you would like to receive.
- Cornell’s Mann Library website houses NASS’s and other agency’s archived reports at <https://usda.library.cornell.edu>. All email subscriptions containing reports will be sent from <https://usda.library.cornell.edu>. To receive the reports via e-mail, you will have to go to the website and subscribe to the reports. If you need instructions to set up an account or subscribe, they are located at: <https://usda.library.cornell.edu/help>. You should whitelist notifications@usda-esmis.library.cornell.edu in your email client to avoid the emails going into spam/junk folders.

For more information on NASS surveys and reports, call the NASS Agricultural Statistics Hotline at (800) 727-9540, 7:30 a.m. to 4:00 p.m. ET, or e-mail: nass@usda.gov.

If you have specific questions you would like an expert to respond to, please visit our “Ask A Specialist” website at www.nass.usda.gov/Contact_Us/Ask_a_Specialist.

In accordance with Federal civil rights law and U.S. Department of Agriculture (USDA) civil rights regulations and policies, the USDA, its Agencies, offices, and employees, and institutions participating in or administering USDA programs are prohibited from discriminating based on race, color, national origin, religion, sex, disability, age, marital status, family/parental status, income derived from a public assistance program, political beliefs, or reprisal or retaliation for prior civil rights activity, in any program or activity conducted or funded by USDA (not all bases apply to all programs). Remedies and complaint filing deadlines vary by program or incident.

Persons with disabilities who require alternative means of communication for program information (e.g., Braille, large print, audiotape, American Sign Language, etc.) should contact the responsible Agency or USDA's TARGET Center at (202) 720-2600 (voice and TTY) or contact USDA through the Federal Relay Service at (800) 877-8339. Additionally, program information may be made available in languages other than English.

To file a program discrimination complaint, complete the USDA Program Discrimination Complaint Form, AD-3027, found online at [How to File a Program Discrimination Complaint](#) and at any USDA office or write a letter addressed to USDA and provide in the letter all of the information requested in the form. To request a copy of the complaint form, call (866) 632-9992. Submit your completed form or letter to USDA by: (1) mail: U.S. Department of Agriculture, Office of the Assistant Secretary for Civil Rights, 1400 Independence Avenue, SW, Washington, D.C. 20250-9410; (2) fax: (202) 690-7442; or (3) email: program.intake@usda.gov.

USDA is an equal opportunity provider, employer, and lender.

Fall 2025

USDA Data Users' Meeting

October 21

1 p.m. CT

West Des Moines, IA



USDA Fall Data Users' Meeting Join Us Online or in West Des Moines October 21, 2025

Iowa Farm Bureau Facility
5400 University Avenue
West Des Moines, IA 50266

USDA's National Agricultural Statistics Service (NASS) will hold an open forum for users of U.S. domestic and international agriculture data. NASS is organizing the 2025 Fall Data Users' Meeting in cooperation with five other USDA agencies – Agricultural Marketing Service, Economic Research Service, Farm Service Agency, Foreign Agricultural Service, and World Agricultural Outlook Board – and the Census Bureau's Foreign Trade Division. Agency representatives will provide updates on recent and pending changes in statistical and information programs important to agriculture, answer questions, and welcome comments and input from data users.