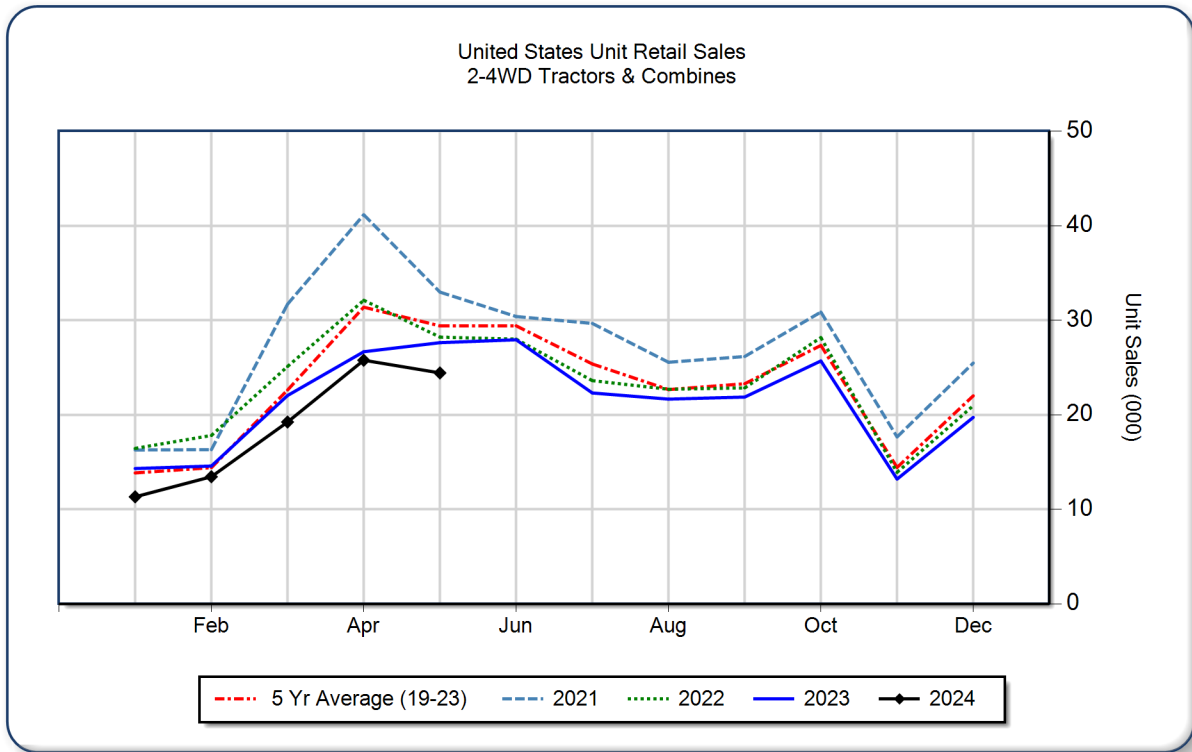


AEM United States Ag Tractor and Combine Report May 2024

Copyright, AEM. All rights reserved. If data is referenced, please acknowledge AEM as the source.

	May			YTD - May			Beginning Inventory May 2024
	2024	2023	%Chg	2024	2023	%Chg	
2WD Farm Tractors							
< 40 HP	16,650	19,047	-12.6	59,913	68,603	-12.7	87,554
40 < 100 HP	5,046	5,657	-10.8	20,813	22,672	-8.2	38,007
100+ HP	2,039	2,173	-6.2	9,650	9,827	-1.8	11,898
Total 2WD Farm Tractors	23,735	26,877	-11.7	90,376	101,102	-10.6	137,459
4WD Farm Tractors	291	266	9.4	1,611	1,561	3.2	797
Total Farm Tractors	24,026	27,143	-11.5	91,987	102,663	-10.4	138,256
Self-Prop Combines	401	487	-17.7	2,205	2,561	-13.9	1,347



The AEM Ag Tractor and Combine Report is provided monthly and is derived from AEM member companies through proprietary statistical reporting programs. The data is provided by AEM members and represents preliminary monthly retail sales of Ag equipment. Separate reports are available for the U.S., Canada and Russia. For more information, please visit: <https://www.aem.org/market-share-statistics/us-ag-tractor-and-combine-reports>. **Attention Media:** To speak with an AEM spokesperson about the data, please contact Sandra Mason at smason@aem.org.