



# Cattle on Feed

ISSN: 1948-9080

---

Released September 22, 2023, by the National Agricultural Statistics Service (NASS), Agricultural Statistics Board, United States Department of Agriculture (USDA).

## United States Cattle on Feed Down 2 Percent

**Cattle and calves on feed** for the slaughter market in the United States for feedlots with capacity of 1,000 or more head totaled 11.1 million head on September 1, 2023. The inventory was 2 percent below September 1, 2022.

**Placements** in feedlots during August totaled 2.00 million head, 5 percent below 2022. Net placements were 1.95 million head. During August, placements of cattle and calves weighing less than 600 pounds were 420,000 head, 600-699 pounds were 305,000 head, 700-799 pounds were 455,000 head, 800-899 pounds were 488,000 head, 900-999 pounds were 245,000 head, and 1,000 pounds and greater were 90,000 head.

**Marketings** of fed cattle during August totaled 1.88 million head, 6 percent below 2022.

**Other disappearance** totaled 55,000 head during August, 4 percent above 2022.

**Cattle on Feed Inventory, Placements, Marketings, and Other Disappearance on 1,000+ Capacity Feedlots – United States: September 1, 2022 and 2023**

Item	2022	2023	Percent of previous year
	(1,000 head)	(1,000 head)	(percent)
On feed August 1 .....	11,289	11,030	98
Placed on feed during August .....	2,110	2,003	95
Fed cattle marketed during August .....	2,004	1,884	94
Other disappearance during August .....	53	55	104
On feed September 1 .....	11,342	11,094	98

**Cattle on Feed Inventory, Placements, Marketings, and Other Disappearance on 1,000+ Capacity Feedlots – United States: August 1, 2022 and 2023**

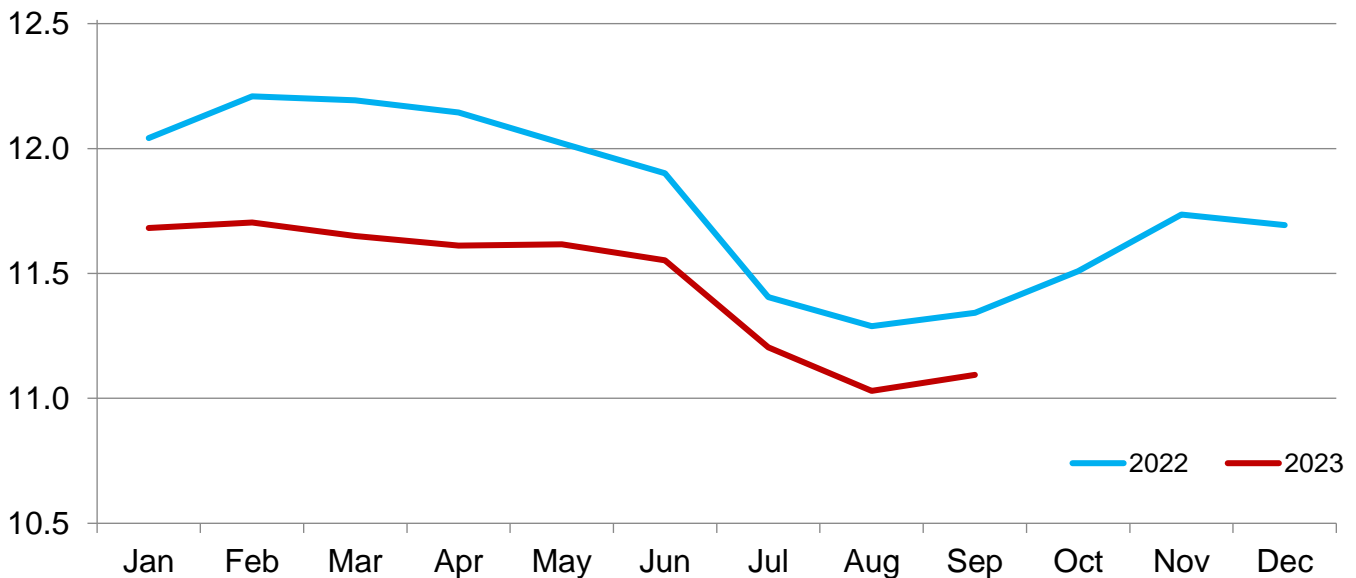
Item	2022	2023	Percent of previous year
	(1,000 head)	(1,000 head)	(percent)
On feed July 1 .....	11,405	11,204	98
Placed on feed during July .....	1,764	1,613	91
Fed cattle marketed during July .....	1,824	1,722	94
Other disappearance during July .....	56	65	116
On feed August 1 .....	11,289	11,030	98

**Cattle on Feed Inventory on 1,000+ Capacity Feedlots by Month – States and United States: 2022 and 2023**

State	September 1, 2022	August 1, 2023	September 1, 2023		
			Inventory	Percent of previous year	Percent of previous month
	(1,000 head)	(1,000 head)	(1,000 head)	(percent)	(percent)
Arizona .....	277	245	244	88	100
California .....	520	525	515	99	98
Colorado .....	1,030	980	950	92	97
Idaho .....	275	280	285	104	102
Iowa .....	610	620	620	102	100
Kansas .....	2,380	2,350	2,410	101	103
Minnesota .....	90	95	95	106	100
Nebraska .....	2,370	2,280	2,270	96	100
Oklahoma .....	280	255	265	95	104
South Dakota .....	175	170	170	97	100
Texas .....	2,820	2,720	2,740	97	101
Washington .....	240	235	245	102	104
Other States .....	275	275	285	104	104
United States .....	11,342	11,030	11,094	98	101

**Cattle on Feed Inventory on 1,000+ Capacity Feedlots – United States**

Million head

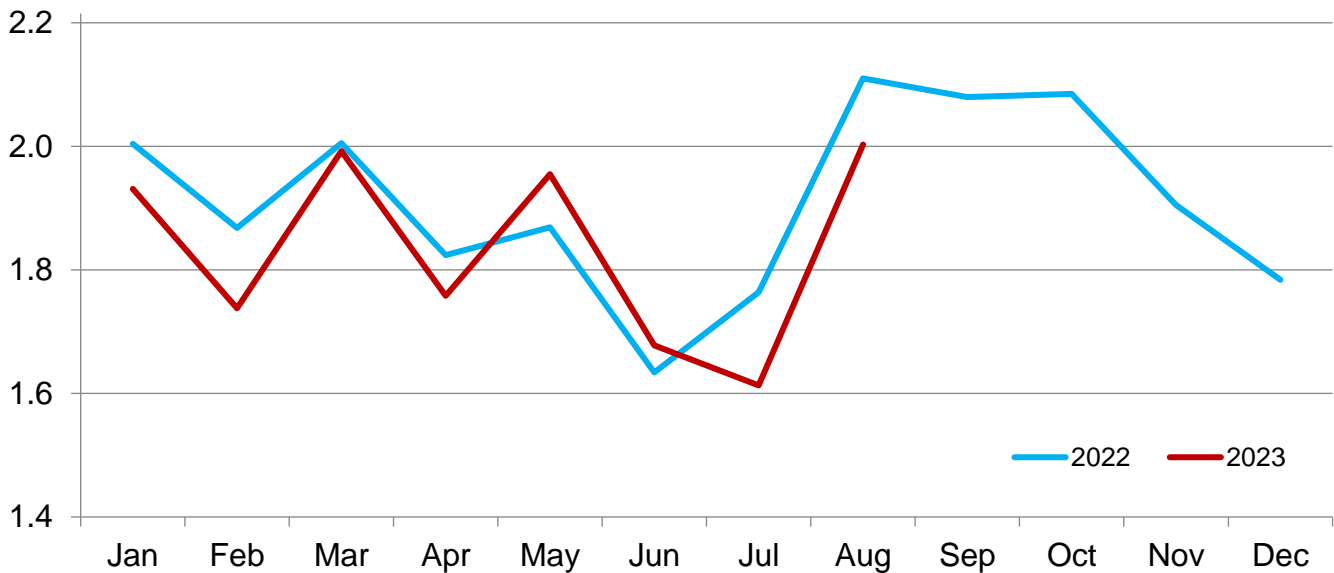


**Cattle Placed on Feed on 1,000+ Capacity Feedlots by Month – States and United States: 2022 and 2023**

State	During August 2022 (1,000 head)	During July 2023 (1,000 head)	During August 2023		
			Placements (1,000 head)	Percent of previous year (percent)	Percent of previous month (percent)
Arizona .....	22	21	21	95	100
California .....	51	44	48	94	109
Colorado .....	175	115	125	71	109
Idaho .....	45	33	48	107	145
Iowa .....	81	51	75	93	147
Kansas .....	535	410	550	103	134
Minnesota .....	18	9	13	72	144
Nebraska .....	570	425	510	89	120
Oklahoma .....	49	38	43	88	113
South Dakota .....	43	21	35	81	167
Texas .....	430	375	440	102	117
Washington .....	40	33	45	113	136
Other States .....	51	38	50	98	132
United States .....	2,110	1,613	2,003	95	124

**Cattle Placed on 1,000+ Capacity Feedlots – United States**

Million head



**Cattle Placed on Feed by Weight Group on 1,000+ Capacity Feedlots and Month – States and United States: 2022 and 2023**

State	During August 2022							
	Under 600 lbs	600-699 lbs	700-799 lbs	800-899 lbs	900+ lbs <sup>1</sup>	900-999 lbs	1,000+ lbs	Total
	(1,000 head)	(1,000 head)	(1,000 head)	(1,000 head)	(1,000 head)	(1,000 head)	(1,000 head)	(1,000 head)
Colorado .....	30	30	35	45	35	(D)	(D)	175
Kansas .....	65	100	170	135	65	(D)	(D)	535
Nebraska .....	45	50	110	190	175	(D)	(D)	570
Texas .....	190	100	80	50	10	(D)	(D)	430
Other States ...	100	40	70	110	80	(D)	(D)	400
United States ..	430	320	465	530	(X)	270	95	2,110
State	During July 2023							
	Under 600 lbs	600-699 lbs	700-799 lbs	800-899 lbs	900+ lbs <sup>1</sup>	900-999 lbs	1,000+ lbs	Total
	(1,000 head)	(1,000 head)	(1,000 head)	(1,000 head)	(1,000 head)	(1,000 head)	(1,000 head)	(1,000 head)
Colorado .....	25	20	25	25	20	(D)	(D)	115
Kansas .....	55	70	125	105	55	(D)	(D)	410
Nebraska .....	35	50	95	130	115	(D)	(D)	425
Texas .....	170	80	70	40	15	(D)	(D)	375
Other States ...	80	30	55	68	55	(D)	(D)	288
United States ..	365	250	370	368	(X)	185	75	1,613
State	During August 2023							
	Under 600 lbs	600-699 lbs	700-799 lbs	800-899 lbs	900+ lbs <sup>1</sup>	900-999 lbs	1,000+ lbs	Total
	(1,000 head)	(1,000 head)	(1,000 head)	(1,000 head)	(1,000 head)	(1,000 head)	(1,000 head)	(1,000 head)
Colorado .....	25	20	25	30	25	(D)	(D)	125
Kansas .....	65	100	175	145	65	(D)	(D)	550
Nebraska .....	45	45	100	160	160	(D)	(D)	510
Texas .....	190	100	85	55	10	(D)	(D)	440
Other States ...	95	40	70	98	75	(D)	(D)	378
United States ..	420	305	455	488	(X)	245	90	2,003

(D) Withheld to avoid disclosing data for individual operations.

(X) Not applicable.

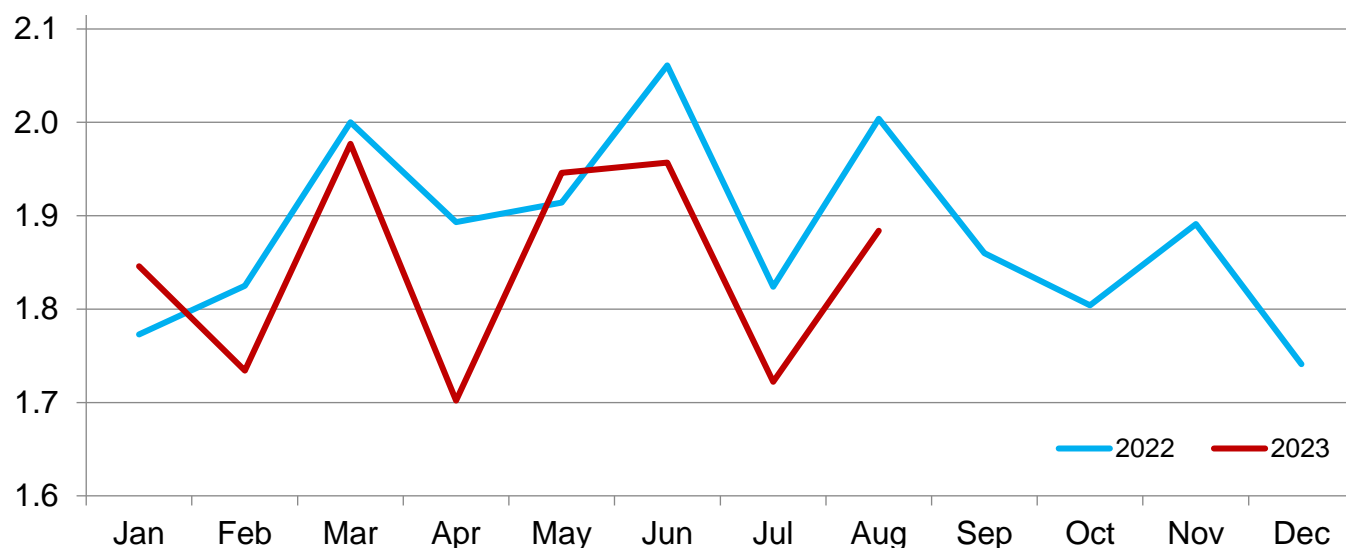
<sup>1</sup> The 900 pounds and greater weight group is the sum of 900-999 pounds and 1,000 pounds and greater weight groups.

**Cattle Marketed on 1,000+ Capacity Feedlots by Month – States and United States: 2022 and 2023**

State	During August 2022	During July 2023	During August 2023		
			Marketings	Percent of previous year	Percent of previous month
	(1,000 head)	(1,000 head)	(1,000 head)	(percent)	(percent)
Arizona .....	23	24	21	91	88
California .....	69	51	51	74	100
Colorado .....	180	120	150	83	125
Idaho .....	44	46	42	95	91
Iowa .....	80	59	74	93	125
Kansas .....	485	450	480	99	107
Minnesota .....	12	13	12	100	92
Nebraska .....	510	460	510	100	111
Oklahoma .....	42	32	32	76	100
South Dakota .....	31	29	34	110	117
Texas .....	450	360	405	90	113
Washington .....	34	37	34	100	92
Other States .....	44	41	39	89	95
United States .....	2,004	1,722	1,884	94	109

## Cattle Marketed on 1,000+ Capacity Feedlots – United States

Million head



### Cattle Other Disappearance on 1,000+ Capacity Feedlots by Month – States and United States: 2022 and 2023

State	During August 2022 (1,000 head)	During July 2023 (1,000 head)	During August 2023		
			Other disappearance (1,000 head)	Percent of previous year (percent)	Percent of previous month (percent)
Arizona .....	1	1	1	100	100
California .....	7	8	7	100	88
Colorado .....	5	5	5	100	100
Idaho .....	1	2	1	100	50
Iowa .....	1	2	1	100	50
Kansas .....	10	10	10	100	100
Minnesota .....	1	1	1	100	100
Nebraska .....	10	15	10	100	67
Oklahoma .....	2	1	1	50	100
South Dakota .....	2	2	1	50	50
Texas .....	10	15	15	150	100
Washington .....	1	1	1	100	100
Other States .....	2	2	1	50	50
United States .....	53	65	55	104	85

## Terms and Definitions of Cattle on Feed Estimates

**Cattle on feed** are steers and heifers being fed a ration of grain, silage, hay and/or protein supplement for slaughter market that are expected to produce a carcass that will grade select or better. It excludes cattle being "backgrounded only" for later sale as feeders or later placement in another feedlot.

**Placements** are steers and heifers put into a feedlot, fed a ration which will produce a carcass that will grade select or better, and are intended for the slaughter market.

**Marketings** are steers and heifers shipped out of feedlots to a slaughter market.

**Other disappearance** includes death loss, movement from feedlots to pasture, and shipments to other feedlots for further feeding.

## Statistical Methodology

**Survey Procedures:** During January and July all known feedlots in the United States with capacity of 1,000 or more head are surveyed to provide data for cattle on feed estimates. During the other months, all known feedlots from 16 States are surveyed. The 16 States account for approximately 98 percent of the cattle on feed in feedlots with capacity of 1,000 or more head. Individual State estimates are published monthly for 12 of the 16 States. Data collected from the remaining 4 States are used to establish the "Other States" estimates. These 4 States include Illinois, New Mexico, Oregon, and Wyoming. The "Other States" category represents all cattle on feed with a capacity of 1,000 or more head for the rest of the United States.

**Estimating Procedures:** These cattle on feed estimates were prepared by the Agricultural Statistics Board after reviewing recommendations and analysis submitted by Regional Field Offices. Regional and State survey data were reviewed for reasonableness with each other and with estimates from the previous month when establishing the current estimates.

**Revision Policy:** Revisions to previous estimates are made to improve month to month relationships. Estimates for the previous month are subject to revision in all States each month when current estimates are made. In February, all monthly estimates for the previous year, and the number of feedlots and annual marketings from two years ago are reviewed and subject to revisions. The reviews are primarily based on slaughter data, state check-off or brand data, and any other data that may have been received after the original estimate was made. Estimates will also be reviewed after data from the *Census of Agriculture* are available. No revisions will be made after that date and estimates become final.

**Reliability:** Since all 1,000+ capacity cattle on feed operators in every State are not included in the monthly survey, survey estimates are subject to sampling variability. Survey results are also subject to non-sampling errors such as omissions, duplications, and mistakes in reporting, recording, and processing the data. The effects of these errors cannot be measured directly. They are minimized through rigid quality controls in the data collection process and through a careful review of all reported data for consistency and reasonableness.

To assist users in evaluating the reliability of estimates in this report, the "**Root Mean Square Error**" is shown for selected items in the table on the following page. The "Root Mean Square Error" is a statistical measure based on past performance and is computed using the differences between first and latest estimates. The "Root Mean Square Error" for cattle on feed inventory estimates over the past 24 months is 0.3 percent. This means that chances are 2 out of 3 that the final estimate will not be above or below the current estimate of 11.1 million head by more than 0.3 percent. Chances are 9 out of 10 that the difference will not exceed 0.5 percent.

The table on the following page shows a 24-month record of the range of differences between first and latest estimates for selected items. Using estimates of number on feed as an example, changes between the first estimate and the latest estimate during the past 24 months have averaged 21,000 head, ranging from 0 to 65,000 head. During this period the initial estimate has been above the latest estimate 0 times and has been below the latest estimate 14 times. This does not imply that the initial estimate is likely to understate or overstate final inventory.

## Reliability of Monthly Cattle on Feed Estimates

[Based on data for the past 24 months]

Item	Root mean square error	90 percent confidence level	Difference between first and latest estimate				
			Average	Smallest	Largest	Months	
						Below latest	Above latest
	(percent)	(percent)	(1,000)	(1,000)	(1,000)	(number)	(number)
On feed .....	0.3	0.5	21	0	65	14	0
Placements .....	0.5	0.9	6	0	23	9	9
Marketings .....	0.1	0.2	1	0	5	3	7

## Information Contacts

Listed below are the commodity specialists in the Livestock Branch of the National Agricultural Statistics Service to contact for additional information. E-mail inquiries may be sent to [nass@usda.gov](mailto:nass@usda.gov).

Travis Averill, Chief, Livestock Branch .....	(202) 692-0069
Scott Hollis, Head, Livestock Section .....	(202) 690-2424
Sherry Bertramsen – Livestock Slaughter .....	(202) 690-8632
Ryan Cowen – Cattle, Cattle on Feed .....	(202) 720-3040
Kim DaPra – Milk Production and Milk Cows .....	(512) 501-3266
Donnie Fike – Dairy Products .....	(202) 690-3347
Anthony Fischer – Hogs and Pigs.....	(202) 720-3106
Suzanne Richards – Sheep and Goats .....	(202) 720-4448



## Access to NASS Reports

For your convenience, you may access NASS reports and products the following ways:

- All reports are available electronically, at no cost, on the NASS web site: [www.nass.usda.gov](http://www.nass.usda.gov).
- Both national and state specific reports are available via a free e-mail subscription. To set-up this free subscription, visit [www.nass.usda.gov](http://www.nass.usda.gov) and click on “National” or “State” in upper right corner above “search” box to create an account and select the reports you would like to receive.
- Cornell’s Mann Library has launched a new website housing NASS’s and other agency’s archived reports. The new website, <https://usda.library.cornell.edu>. All email subscriptions containing reports will be sent from the new website, <https://usda.library.cornell.edu>. To continue receiving the reports via e-mail, you will have to go to the new website, create a new account and re-subscribe to the reports. If you need instructions to set up an account or subscribe, they are located at: <https://usda.library.cornell.edu/help>. You should whitelist [notifications@usda-esmis.library.cornell.edu](mailto:notifications@usda-esmis.library.cornell.edu) in your email client to avoid the emails going into spam/junk folders.

For more information on NASS surveys and reports, call the NASS Agricultural Statistics Hotline at (800) 727-9540, 7:30 a.m. to 4:00 p.m. ET, or e-mail: [nass@usda.gov](mailto:nass@usda.gov).

The U.S. Department of Agriculture (USDA) prohibits discrimination against its customers, employees, and applicants for employment on the basis of race, color, national origin, age, disability, sex, gender identity, religion, reprisal, and where applicable, political beliefs, marital status, familial or parental status, sexual orientation, or all or part of an individual's income is derived from any public assistance program, or protected genetic information in employment or in any program or activity conducted or funded by the Department. (Not all prohibited bases will apply to all programs and/or employment activities.)

If you wish to file a Civil Rights program complaint of discrimination, complete the [USDA Program Discrimination Complaint Form](#) (PDF), found online at [www.ascr.usda.gov/filing-program-discrimination-complaint-usda-customer](http://www.ascr.usda.gov/filing-program-discrimination-complaint-usda-customer), or at any USDA office, or call (866) 632-9992 to request the form. You may also write a letter containing all of the information requested in the form. Send your completed complaint form or letter to us by mail at U.S. Department of Agriculture, Director, Office of Adjudication, 1400 Independence Avenue, S.W., Washington, D.C. 20250-9410, by fax (202) 690-7442 or email at [program.intake@usda.gov](mailto:program.intake@usda.gov).



**USDA Fall Data Users' Meeting**  
**Virtual Meeting**  
**October 17 & 18, 2023**  
**12:00 – 3:00 pm ET**

USDA's National Agricultural Statistics Service (NASS) will hold a virtual meeting for users of U.S. domestic and international agriculture data. NASS is organizing the 2023 Fall Data Users' Meeting in cooperation with five other USDA agencies – Agricultural Marketing Service, Economic Research Service, Farm Service Agency, Foreign Agricultural Service, and World Agricultural Outlook Board – and the Census Bureau's Foreign Trade Division. Representatives will provide agency updates, answer questions, and listen to concerns from data users.

**Abbreviated Agenda**

Day 1 – October 17

Agency Updates– *All agencies*

Focus on the 2022 Census of Agriculture - *National Agricultural Statistics Service*

The Use of Weather Information In Producing the WASDE - *World Agricultural Outlook Board*

NASS Historical Revisions and Estimating Program Review - *National Agricultural Statistics Service*

AMS Data Visualizations - *Agricultural Marketing Service*

Day 2 – October 18

Open Forum – *All agencies*

ERS Feed Grains Database: A comprehensive look at this valuable resource – *Economic Research Service*

Understanding Publicly Available Data from USDA-Risk Management Agency – *Risk Management Agency*

For registration details or additional information about the Data Users' Meeting, see the meeting page on the NASS website ([https://www.nass.usda.gov/go/data\\_users](https://www.nass.usda.gov/go/data_users)).