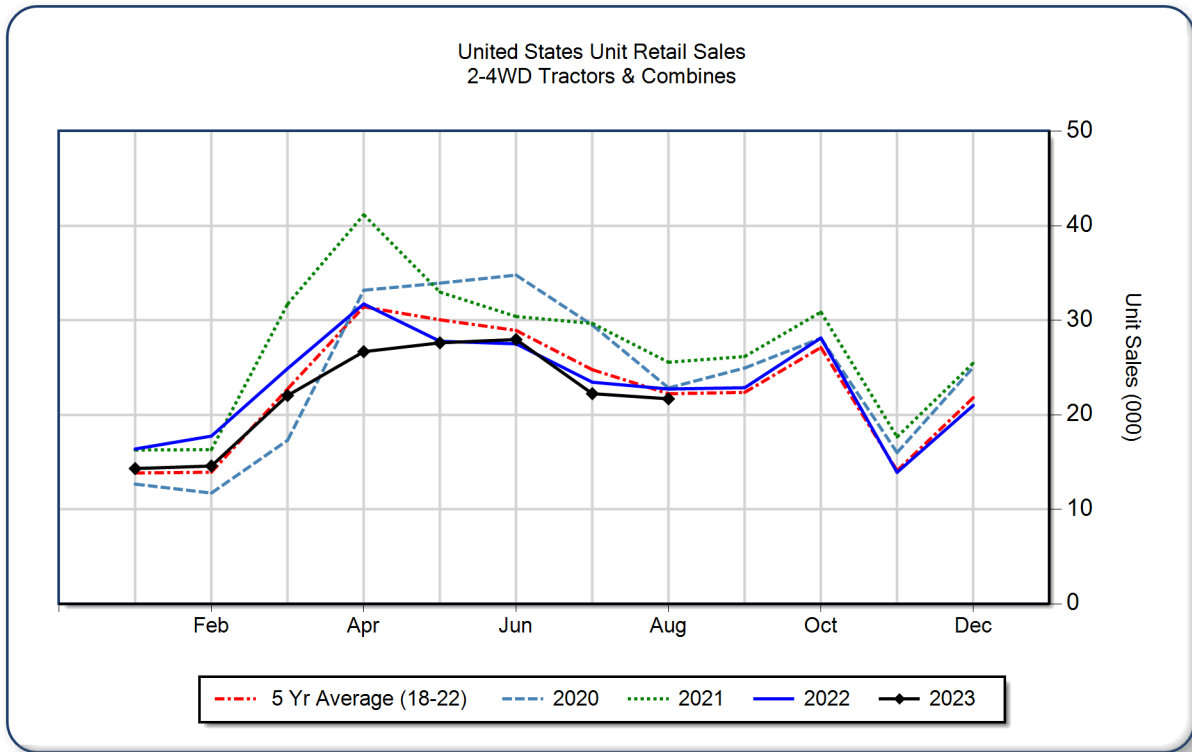


**AEM United States Ag Tractor and Combine Report
 August 2023**

Copyright, AEM. All rights reserved. If data is referenced, please acknowledge AEM as the source.

	August			YTD - August			Beginning Inventory Aug 2023
	2023	2022	%Chg	2023	2022	%Chg	
2WD Farm Tractors							
< 40 HP	12,864	13,834	-7.0	112,468	127,214	-11.6	98,591
40 < 100 HP	5,608	5,861	-4.3	40,367	43,716	-7.7	39,036
100+ HP	2,133	1,984	7.5	16,930	15,731	7.6	10,927
Total 2WD Farm Tractors	20,605	21,679	-5.0	169,765	186,661	-9.1	148,554
4WD Farm Tractors	312	257	21.4	2,536	1,891	34.1	604
Total Farm Tractors	20,917	21,936	-4.6	172,301	188,552	-8.6	149,158
Self-Prop Combines	771	790	-2.4	4,799	3,642	31.8	1,662



The AEM Ag Tractor and Combine Report is provided monthly and is derived from AEM member companies through proprietary statistical reporting programs. The data is provided by AEM members and represents preliminary monthly retail sales of Ag equipment. Separate reports are available for the U.S., Canada and Russia. For more information, please visit: <https://www.aem.org/market-share-statistics/us-ag-tractor-and-combine-reports>. **Attention Media:** To speak with an AEM spokesperson about the data, please contact Sandra Mason at smason@aem.org.