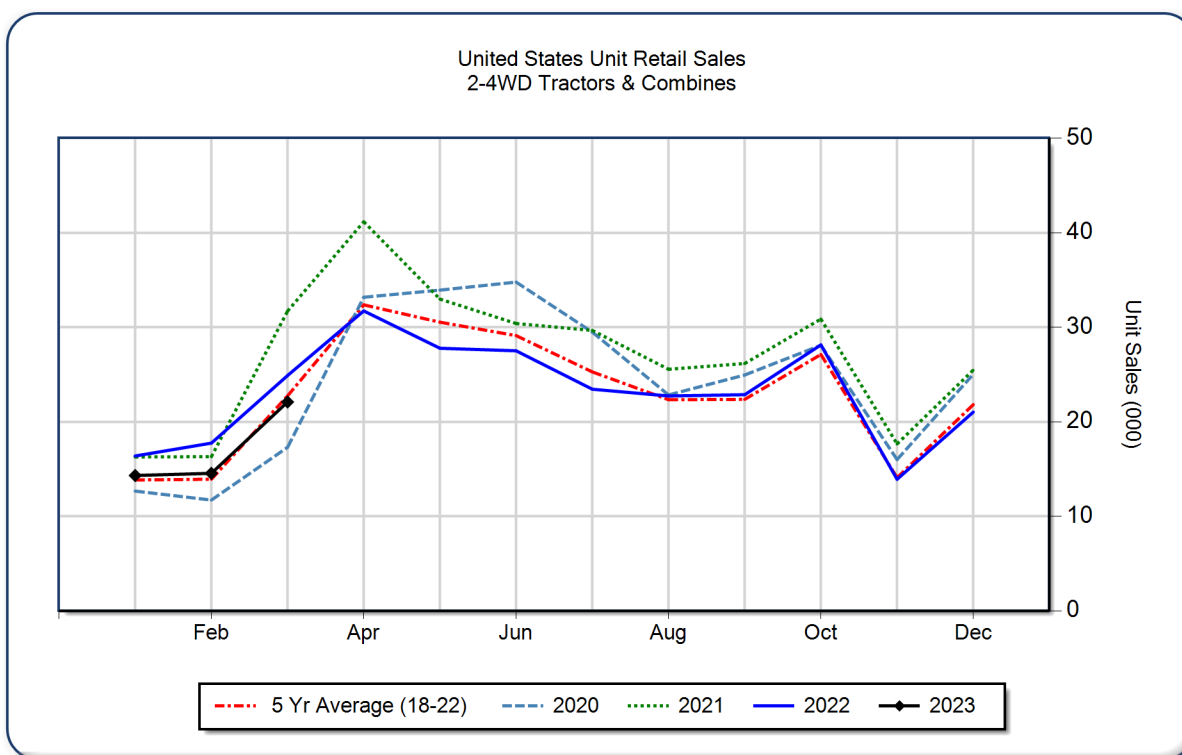


AEM United States Ag Tractor and Combine Report March 2023

Copyright, AEM. All rights reserved. If data is referenced, please acknowledge AEM as the source.

	March			YTD - March			Beginning Inventory Mar 2023
	2023	2022	%Chg	2023	2022	%Chg	
2WD Farm Tractors							
< 40 HP	14,560	16,978	-14.2	31,288	39,175	-20.1	111,353
40 < 100 HP	4,755	5,389	-11.8	12,047	13,539	-11.0	34,727
100+ HP	1,857	1,978	-6.1	5,210	4,952	5.2	8,975
Total 2WD Farm Tractors	21,172	24,345	-13.0	48,545	57,666	-15.8	155,055
4WD Farm Tractors	414	201	106.0	898	596	50.7	520
Total Farm Tractors	21,586	24,546	-12.1	49,443	58,262	-15.1	155,575
Self-Prop Combines	509	346	47.1	1,514	751	101.6	1,256



The AEM Ag Tractor and Combine Report is provided monthly and is derived from AEM member companies through proprietary statistical reporting programs. The data is provided by AEM members and represents preliminary monthly retail sales of Ag equipment. Separate reports are available for the U.S., Canada and Russia. For more information, please visit: <https://www.aem.org/market-share-statistics/us-ag-tractor-and-combine-reports>. **Attention Media:** To speak with an AEM spokesperson about the data, please contact Sandra Mason at smason@aem.org.