



Released January 20, 2023, by the National Agricultural Statistics Service (NASS), Agricultural Statistics Board, United States Department of Agriculture (USDA).

United States Cattle on Feed Down 3 Percent

Cattle and calves on feed for the slaughter market in the United States for feedlots with capacity of 1,000 or more head totaled 11.7 million head on January 1, 2023. The inventory was 3 percent below January 1, 2022. The inventory included 7.03 million steers and steer calves, down 4 percent from the previous year. This group accounted for 60 percent of the total inventory. Heifers and heifer calves accounted for 4.65 million head, down 1 percent from 2022.

Placements in feedlots during December totaled 1.80 million head, 8 percent below 2021. Net placements were 1.75 million head. During December, placements of cattle and calves weighing less than 600 pounds were 455,000 head, 600-699 pounds were 435,000 head, 700-799 pounds were 415,000 head, 800-899 pounds were 304,000 head, 900-999 pounds were 105,000 head, and 1,000 pounds and greater were 90,000 head.

Marketings of fed cattle during December totaled 1.74 million head, 6 percent below 2021.

Other disappearance totaled 54,000 head during December, unchanged from 2021.

Cattle on Feed Inventory, Placements, Marketings, and Other Disappearance on 1,000+ Capacity Feedlots – United States: January 1, 2022 and 2023

[December preceding year]

Item	2022	2023	Percent of previous year	
	(1,000 head)	(1,000 head)	(percent)	
On feed December 1	11,985	11,673	97	
Placed on feed during December	1,960	1,804	92	
Fed cattle marketed during December	1,854	1,741	94	
Other disappearance during December	54	54	100	
On feed January 1	12,037	11,682	97	

Cattle on Feed Inventory, Placements, Marketings, and Other Disappearance on 1,000+ Capacity Feedlots – United States: December 1, 2021 and 2022

Item	2021	2022	Percent of previous year	
	(1,000 head)	(1,000 head)	(percent)	
On feed November 1	11,948	11,696	98	
Placed on feed during November	1,967	1,925	98	
Fed cattle marketed during November	1,869	1,891	101	
Other disappearance during November	61	57	93	
On feed December 1	11,985	11,673	97	

Cattle on Feed by Class on 1,000+ Capacity Feedlots – United States: January 1, 2022 and 2023

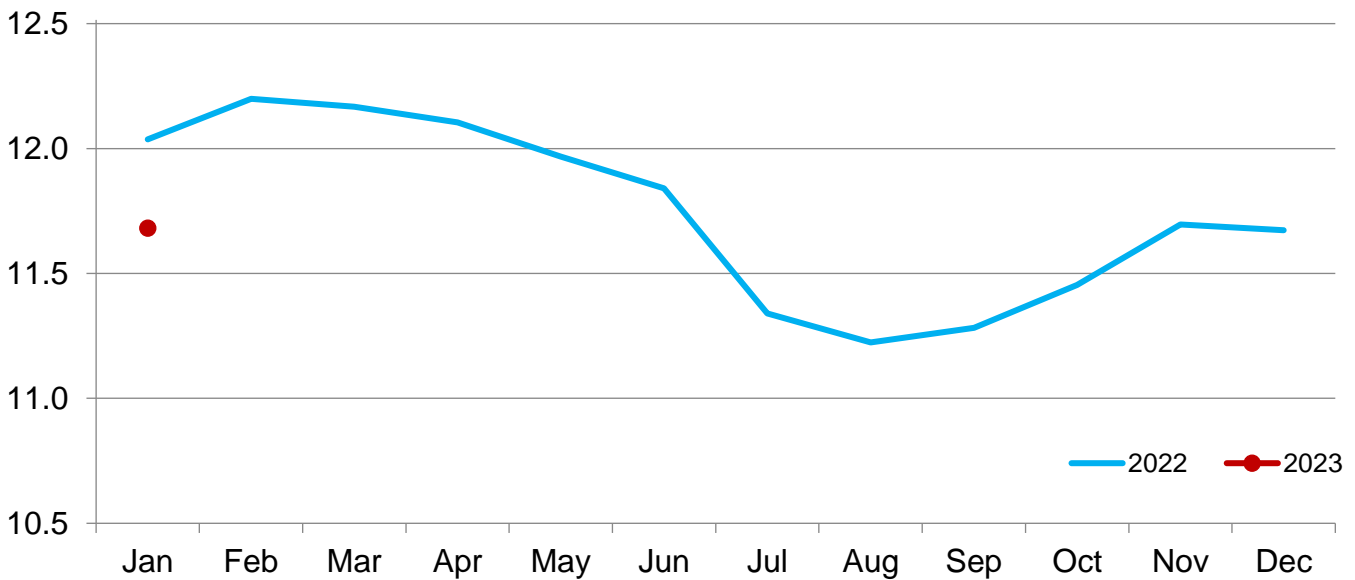
Item	2022	2023	Percent of	
			previous year	inventory
			(percent)	(percent)
Class on feed January 1	(1,000 head)	(1,000 head)		
Steers and steer calves	7,362	7,032	96	60
Heifers and heifer calves	4,675	4,650	99	40

Cattle on Feed Inventory on 1,000+ Capacity Feedlots by Month – States and United States: 2022 and 2023

State	January 1, 2022	December 1, 2022	January 1, 2023		
			Inventory	Percent of previous year	Percent of previous month
	(1,000 head)	(1,000 head)	(1,000 head)	(percent)	(percent)
Arizona	272	268	267	98	100
California	555	505	515	93	102
Colorado	1,130	1,040	1,040	92	100
Idaho	310	315	320	103	102
Iowa	600	630	620	103	98
Kansas	2,490	2,330	2,390	96	103
Minnesota	100	95	95	95	100
Nebraska	2,600	2,610	2,600	100	100
Oklahoma	310	280	275	89	98
South Dakota	230	220	210	91	95
Texas	2,920	2,810	2,770	95	99
Washington	210	250	265	126	106
Other States	310	320	315	102	98
United States	12,037	11,673	11,682	97	100

Cattle on Feed Inventory on 1,000+ Capacity Feedlots – United States

Million head

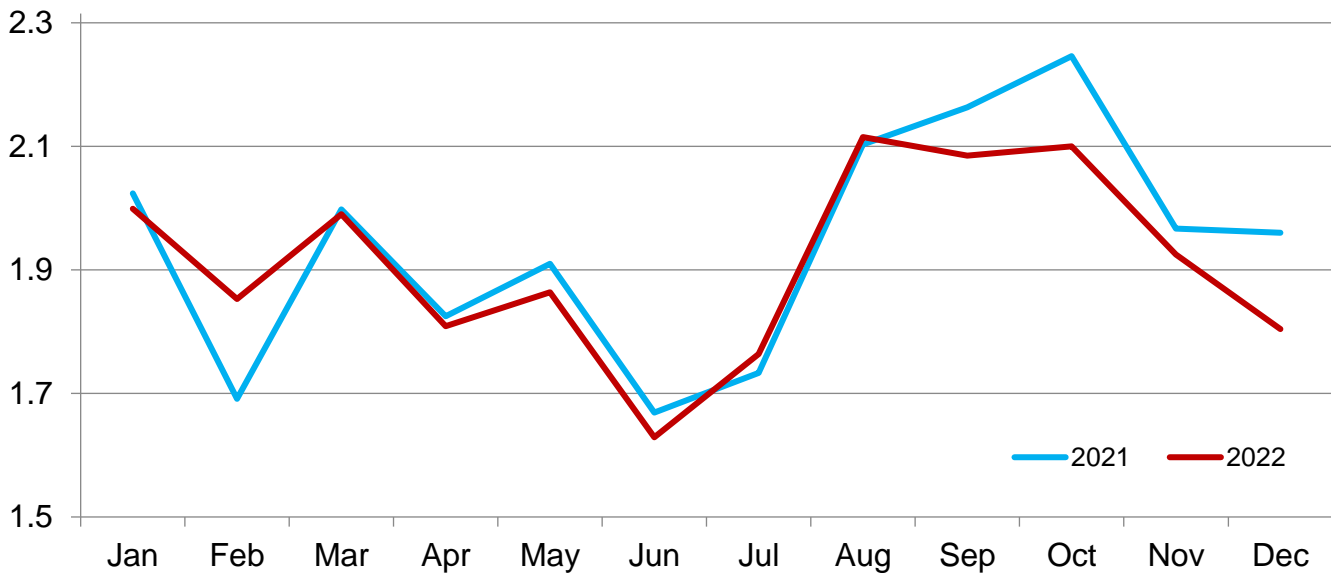


Cattle Placed on Feed on 1,000+ Capacity Feedlots by Month – States and United States: 2021 and 2022

State	During December 2021 (1,000 head)	During November 2022 (1,000 head)	During December 2022		
			Placements (1,000 head)	Percent of previous year (percent)	Percent of previous month (percent)
Arizona	30	23	24	80	104
California	66	60	69	105	115
Colorado	165	145	145	88	100
Idaho	41	53	46	112	87
Iowa	85	105	84	99	80
Kansas	450	420	440	98	105
Minnesota	11	17	13	118	76
Nebraska	505	505	470	93	93
Oklahoma	46	38	35	76	92
South Dakota	43	75	34	79	45
Texas	445	370	350	79	95
Washington	30	56	52	173	93
Other States	43	58	42	98	72
United States	1,960	1,925	1,804	92	94

Cattle Placed on 1,000+ Capacity Feedlots – United States

Million head



Cattle Placed on Feed by Weight Group on 1,000+ Capacity Feedlots and Month – States and United States: 2021 and 2022

State	During December 2021							
	Under 600 lbs	600-699 lbs	700-799 lbs	800-899 lbs	900+ lbs ¹	900-999 lbs	1,000+ lbs	Total
	(1,000 head)	(1,000 head)	(1,000 head)	(1,000 head)	(1,000 head)	(1,000 head)	(1,000 head)	(1,000 head)
Colorado	40	40	35	30	20	(D)	(D)	165
Kansas	65	105	145	90	45	(D)	(D)	450
Nebraska	55	125	120	110	95	(D)	(D)	505
Texas	200	110	80	45	10	(D)	(D)	445
Other States ...	150	90	70	55	30	(D)	(D)	395
United States ..	510	470	450	330	(X)	105	95	1,960
State	During November 2022							
	Under 600 lbs	600-699 lbs	700-799 lbs	800-899 lbs	900+ lbs ¹	900-999 lbs	1,000+ lbs	Total
	(1,000 head)	(1,000 head)	(1,000 head)	(1,000 head)	(1,000 head)	(1,000 head)	(1,000 head)	(1,000 head)
Colorado	45	30	30	20	20	(D)	(D)	145
Kansas	65	105	125	80	45	(D)	(D)	420
Nebraska	100	125	95	85	100	(D)	(D)	505
Texas	145	95	75	40	15	(D)	(D)	370
Other States ...	185	110	80	65	45	(D)	(D)	485
United States ..	540	465	405	290	(X)	135	90	1,925
State	During December 2022							
	Under 600 lbs	600-699 lbs	700-799 lbs	800-899 lbs	900+ lbs ¹	900-999 lbs	1,000+ lbs	Total
	(1,000 head)	(1,000 head)	(1,000 head)	(1,000 head)	(1,000 head)	(1,000 head)	(1,000 head)	(1,000 head)
Colorado	35	35	30	25	20	(D)	(D)	145
Kansas	60	110	140	85	45	(D)	(D)	440
Nebraska	50	115	115	100	90	(D)	(D)	470
Texas	160	85	60	35	10	(D)	(D)	350
Other States ...	150	90	70	59	30	(D)	(D)	399
United States ..	455	435	415	304	(X)	105	90	1,804

(D) Withheld to avoid disclosing data for individual operations.

(X) Not applicable.

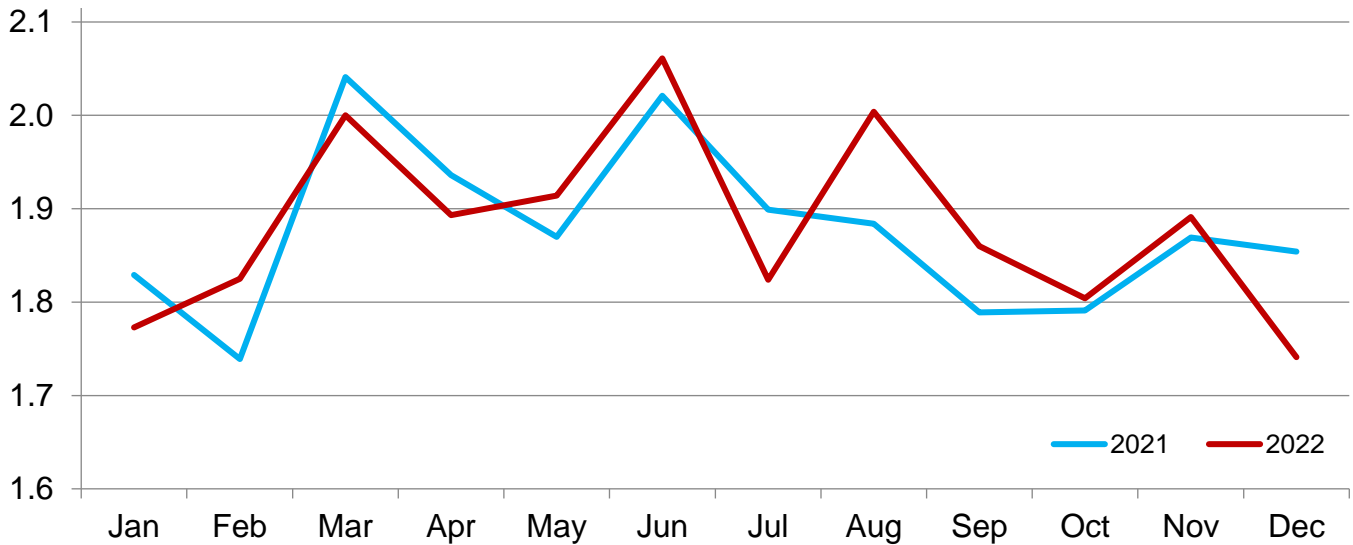
¹ The 900 pounds and greater weight group is the sum of 900-999 pounds and 1,000 pounds and greater weight groups.

Cattle Marketed on 1,000+ Capacity Feedlots by Month – States and United States: 2021 and 2022

State	During December 2021	During November 2022	During December 2022		
			Marketings	Percent of previous year	Percent of previous month
	(1,000 head)	(1,000 head)	(1,000 head)	(percent)	(percent)
Arizona	27	25	24	89	96
California	56	53	53	95	100
Colorado	170	170	140	82	82
Idaho	40	42	40	100	95
Iowa	92	94	92	100	98
Kansas	430	410	370	86	90
Minnesota	15	16	12	80	75
Nebraska	475	480	470	99	98
Oklahoma	34	47	39	115	83
South Dakota	45	63	40	89	63
Texas	395	410	380	96	93
Washington	29	35	36	124	103
Other States	46	46	45	98	98
United States	1,854	1,891	1,741	94	92

Cattle Marketed on 1,000+ Capacity Feedlots – United States

Million head



Cattle Other Disappearance on 1,000+ Capacity Feedlots by Month – States and United States: 2021 and 2022

State	During December 2021 (1,000 head)	During November 2022 (1,000 head)	During December 2022		
			Other disappearance (1,000 head)	Percent of previous year (percent)	Percent of previous month (percent)
Arizona	1	1	1	100	100
California	5	7	6	120	86
Colorado	5	5	5	100	100
Idaho	1	1	1	100	100
Iowa	3	1	2	67	200
Kansas	10	10	10	100	100
Minnesota	1	1	1	100	100
Nebraska	10	15	10	100	67
Oklahoma	2	1	1	50	100
South Dakota	3	2	4	133	200
Texas	10	10	10	100	100
Washington	1	1	1	100	100
Other States	2	2	2	100	100
United States	54	57	54	100	95

**Cattle on Feed by Class on 1,000+ Capacity Feedlots by Quarter – States and United States:
2022 and 2023**

State	Steers and steer calves			Heifers and heifer calves		
	Jan 1, 2022	Oct 1, 2022	Jan 1, 2023	Jan 1, 2022	Oct 1, 2022	Jan 1, 2023
	(1,000 Head)	(1,000 Head)	(1,000 Head)	(1,000 Head)	(1,000 Head)	(1,000 Head)
Arizona	267	264	257	5	10	10
California	470	435	435	85	75	80
Colorado	635	590	580	495	480	460
Idaho	160	155	165	150	135	155
Iowa	450	465	465	150	135	155
Kansas	1,340	1,270	1,270	1,150	1,090	1,120
Minnesota	85	70	80	15	15	15
Nebraska	1,590	1,490	1,600	1,010	980	1,000
Oklahoma	165	155	150	145	130	125
South Dakota	135	105	125	95	80	85
Texas	1,760	1,610	1,560	1,160	1,210	1,210
Washington	110	110	150	100	100	115
Other States	195	185	195	115	110	120
United States	7,362	6,904	7,032	4,675	4,550	4,650

Terms and Definitions of Cattle on Feed Estimates

Cattle on feed are steers and heifers being fed a ration of grain, silage, hay and/or protein supplement for slaughter market that are expected to produce a carcass that will grade select or better. It excludes cattle being "backgrounded only" for later sale as feeders or later placement in another feedlot.

Placements are steers and heifers put into a feedlot, fed a ration which will produce a carcass that will grade select or better, and are intended for the slaughter market.

Marketings are steers and heifers shipped out of feedlots to a slaughter market.

Other disappearance includes death loss, movement from feedlots to pasture, and shipments to other feedlots for further feeding.

Statistical Methodology

Survey Procedures: During January and July all known feedlots in the United States with capacity of 1,000 or more head are surveyed to provide data for cattle on feed estimates. During the other months, all known feedlots from 16 States are surveyed. The 16 States account for approximately 98 percent of the cattle on feed in feedlots with capacity of 1,000 or more head. Individual State estimates are published monthly for 12 of the 16 States. Data collected from the remaining 4 States are used to establish the "Other States" estimates. These 4 States include Illinois, New Mexico, Oregon, and Wyoming. The "Other States" category represents all cattle on feed with a capacity of 1,000 or more head for the rest of the United States.

Estimating Procedures: These cattle on feed estimates were prepared by the Agricultural Statistics Board after reviewing recommendations and analysis submitted by Regional Field Offices. Regional and State survey data were reviewed for reasonableness with each other and with estimates from the previous month when establishing the current estimates.

Revision Policy: Revisions to previous estimates are made to improve month to month relationships. Estimates for the previous month are subject to revision in all States each month when current estimates are made. In February, all monthly estimates for the previous year, and the number of feedlots and annual marketings from two years ago are reviewed and subject to revisions. The reviews are primarily based on slaughter data, state check-off or brand data, and any other data that may have been received after the original estimate was made. Estimates will also be reviewed after data from the *Census of Agriculture* are available. No revisions will be made after that date and estimates become final.

Reliability: Since all 1,000+ capacity cattle on feed operators in every State are not included in the monthly survey, survey estimates are subject to sampling variability. Survey results are also subject to non-sampling errors such as omissions, duplications, and mistakes in reporting, recording, and processing the data. The effects of these errors cannot be measured directly. They are minimized through rigid quality controls in the data collection process and through a careful review of all reported data for consistency and reasonableness.

To assist users in evaluating the reliability of estimates in this report, the "**Root Mean Square Error**" is shown for selected items in the table on the following page. The "Root Mean Square Error" is a statistical measure based on past performance and is computed using the differences between first and latest estimates. The "Root Mean Square Error" for cattle on feed inventory estimates over the past 24 months is 0.0 percent. This means that chances are 2 out of 3 that the final estimate will not be above or below the current estimate of 11.7 million head by more than 0.0 percent. Chances are 9 out of 10 that the difference will not exceed 0.1 percent.

The table on the following page shows a 24-month record of the range of differences between first and latest estimates for selected items. Using estimates of number on feed as an example, changes between the first estimate and the latest estimate during the past 24 months have averaged 2,000 head, ranging from 0 to 10,000 head. During this period the initial estimate has been above the latest estimate 2 times and has been below the latest estimate 7 times. This does not imply that the initial estimate is likely to understate or overstate final inventory.

Reliability of Monthly Cattle on Feed Estimates

[Based on data for the past 24 months]

Item	Root mean square error	90 percent confidence level	Difference between first and latest estimate				
			Average	Smallest	Largest	Months	
						Below latest	Above latest
	(percent)	(percent)	(1,000)	(1,000)	(1,000)	(number)	(number)
On feed	0.0	0.1	2	0	10	7	2
Placements	0.2	0.3	3	0	8	9	9
Marketings	0.1	0.2	1	0	7	5	7

Information Contacts

Listed below are the commodity specialists in the Livestock Branch of the National Agricultural Statistics Service to contact for additional information. E-mail inquiries may be sent to nass@usda.gov.

Travis Averill, Chief, Livestock Branch	(202) 692-0069
Scott Hollis, Head, Livestock Section	(202) 690-2424
Sherry Bertramsen – Livestock Slaughter	(202) 690-8632
Ryan Cowen – Cattle, Cattle on Feed	(202) 720-3040
Anthony Fischer – Hogs and Pigs	(202) 720-3106
Mike Miller – Milk Production and Milk Cows	(202) 720-3278
Suzanne Richards – Dairy Products	(202) 720-4448
Suzanne Richards – Sheep and Goats	(202) 720-4448

Access to NASS Reports

For your convenience, you may access NASS reports and products the following ways:

- All reports are available electronically, at no cost, on the NASS web site: www.nass.usda.gov.
- Both national and state specific reports are available via a free e-mail subscription. To set-up this free subscription, visit www.nass.usda.gov and click on “National” or “State” in upper right corner above “search” box to create an account and select the reports you would like to receive.
- Cornell’s Mann Library has launched a new website housing NASS’s and other agency’s archived reports. The new website, <https://usda.library.cornell.edu>. All email subscriptions containing reports will be sent from the new website, <https://usda.library.cornell.edu>. To continue receiving the reports via e-mail, you will have to go to the new website, create a new account and re-subscribe to the reports. If you need instructions to set up an account or subscribe, they are located at: <https://usda.library.cornell.edu/help>. You should whitelist notifications@usda-esmis.library.cornell.edu in your email client to avoid the emails going into spam/junk folders.

For more information on NASS surveys and reports, call the NASS Agricultural Statistics Hotline at (800) 727-9540, 7:30 a.m. to 4:00 p.m. ET, or e-mail: nass@usda.gov.

The U.S. Department of Agriculture (USDA) prohibits discrimination against its customers, employees, and applicants for employment on the basis of race, color, national origin, age, disability, sex, gender identity, religion, reprisal, and where applicable, political beliefs, marital status, familial or parental status, sexual orientation, or all or part of an individual's income is derived from any public assistance program, or protected genetic information in employment or in any program or activity conducted or funded by the Department. (Not all prohibited bases will apply to all programs and/or employment activities.)

If you wish to file a Civil Rights program complaint of discrimination, complete the [USDA Program Discrimination Complaint Form](#) (PDF), found online at www.ascr.usda.gov/filing-program-discrimination-complaint-usda-customer, or at any USDA office, or call (866) 632-9992 to request the form. You may also write a letter containing all of the information requested in the form. Send your completed complaint form or letter to us by mail at U.S. Department of Agriculture, Director, Office of Adjudication, 1400 Independence Avenue, S.W., Washington, D.C. 20250-9410, by fax (202) 690-7442 or email at program.intake@usda.gov.



U.S. DEPARTMENT OF AGRICULTURE

Hybrid
Event

USDA's 99th Annual Agricultural Outlook Forum



U.S. Agriculture: Seeds of Growth Through Innovation

February 23-24, 2023

You're invited to USDA's largest annual gathering and the agricultural sector's premier event—the 2023 Agricultural Outlook Forum. The Forum will be held in person on February 23-24, 2023, at the Crystal City Gateway Marriott, Arlington, VA and all sessions will be livestreamed.

The program will feature an exceptional lineup of topics and speakers!

- Join Chief Economist Seth Meyer as he unveils USDA's initial forecast for the agricultural economy, commodity markets, and trade in 2023 and discuss U.S. farm income situation.
- Learn from more than 100 subject matter experts, executives and academics as they discuss some of the most pressing issues impacting agriculture and potential solutions.
- Get the latest on supply chain challenges and solutions, climate-smart agriculture and more!

Participants can attend the Agricultural Outlook Forum in person or virtually. Registration is required for both virtual and in-person attendance. There is no cost to attending the Forum virtually.

For more information, see the Forum's [Program at a Glance](#)

Don't miss your chance to hear the latest updates from industry leaders.

[Register Today!](#)