



Released December 23, 2022, by the National Agricultural Statistics Service (NASS), Agricultural Statistics Board, United States Department of Agriculture (USDA).

United States Cattle on Feed Down 3 Percent

Cattle and calves on feed for the slaughter market in the United States for feedlots with capacity of 1,000 or more head totaled 11.7 million head on December 1, 2022. The inventory was 3 percent below December 1, 2021.

Placements in feedlots during November totaled 1.93 million head, 2 percent below 2021. Net placements were 1.87 million head. During November, placements of cattle and calves weighing less than 600 pounds were 540,000 head, 600-699 pounds were 465,000 head, 700-799 pounds were 405,000 head, 800-899 pounds were 290,000 head, 900-999 pounds were 135,000 head, and 1,000 pounds and greater were 90,000 head.

Marketings of fed cattle during November totaled 1.89 million head, 1 percent above 2021. Marketings were the highest for November since the series began in 1996.

Other disappearance totaled 57,000 head during November, 7 percent below 2021.

Cattle on Feed Inventory, Placements, Marketings, and Other Disappearance on 1,000+ Capacity Feedlots – United States: December 1, 2021 and 2022

Item	2021	2022	Percent of previous year
	(1,000 head)	(1,000 head)	(percent)
On feed November 1	11,948	11,696	98
Placed on feed during November	1,967	1,925	98
Fed cattle marketed during November	1,869	1,891	101
Other disappearance during November	61	57	93
On feed December 1	11,985	11,673	97

Cattle on Feed Inventory, Placements, Marketings, and Other Disappearance on 1,000+ Capacity Feedlots – United States: November 1, 2021 and 2022

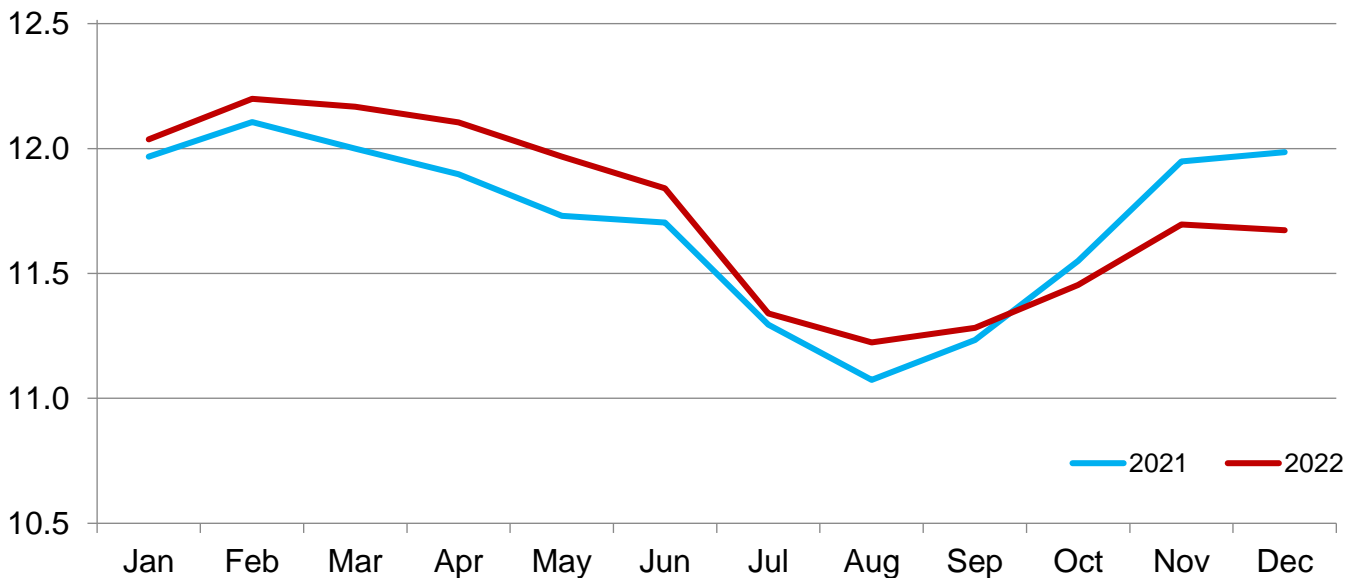
Item	2021	2022	Percent of previous year
	(1,000 head)	(1,000 head)	(percent)
On feed October 1	11,550	11,454	99
Placed on feed during October	2,246	2,100	93
Fed cattle marketed during October	1,791	1,804	101
Other disappearance during October	57	54	95
On feed November 1	11,948	11,696	98

Cattle on Feed Inventory on 1,000+ Capacity Feedlots by Month – States and United States: 2021 and 2022

State	December 1, 2021	November 1, 2022	December 1, 2022		
			Inventory	Percent of previous year	Percent of previous month
	(1,000 head)	(1,000 head)	(1,000 head)	(percent)	(percent)
Arizona	270	271	268	99	99
California	550	505	505	92	100
Colorado	1,140	1,070	1,040	91	97
Idaho	310	305	315	102	103
Iowa	610	620	630	103	102
Kansas	2,480	2,330	2,330	94	100
Minnesota	105	95	95	90	100
Nebraska	2,580	2,600	2,610	101	100
Oklahoma	300	290	280	93	97
South Dakota	235	210	220	94	105
Texas	2,880	2,860	2,810	98	98
Washington	210	230	250	119	109
Other States	315	310	320	102	103
United States	11,985	11,696	11,673	97	100

Cattle on Feed Inventory on 1,000+ Capacity Feedlots – United States

Million head

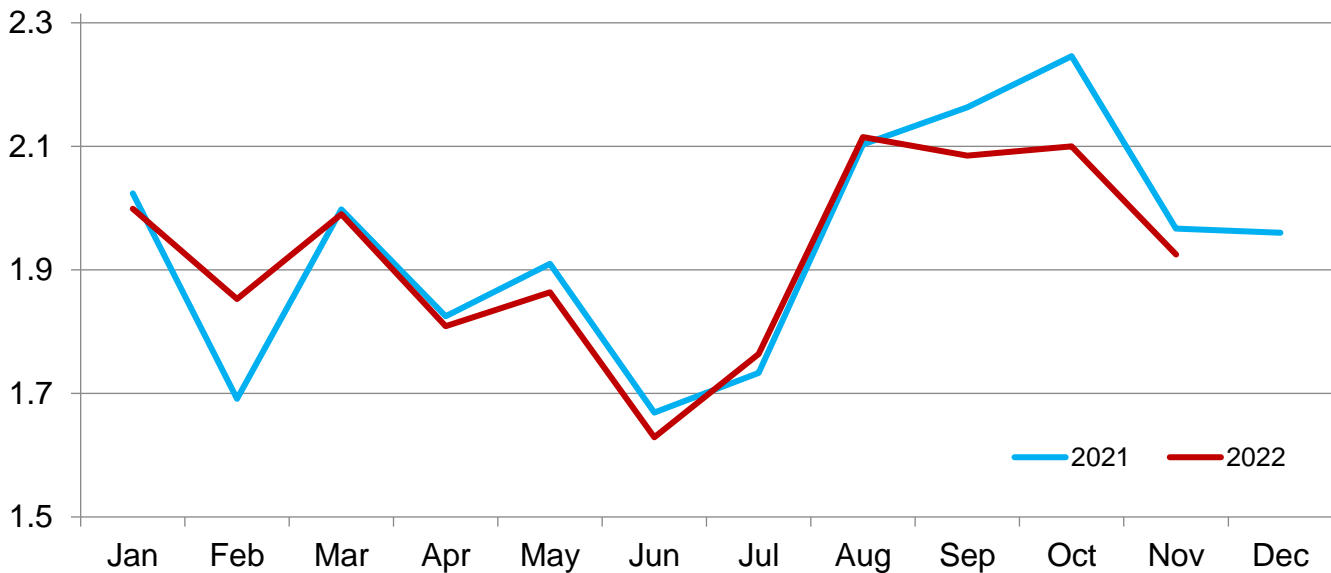


Cattle Placed on Feed on 1,000+ Capacity Feedlots by Month – States and United States: 2021 and 2022

State	During November 2021 (1,000 head)	During October 2022 (1,000 head)	During November 2022		
			Placements (1,000 head)	Percent of previous year (percent)	Percent of previous month (percent)
Arizona	27	19	23	85	121
California	61	44	60	98	136
Colorado	160	175	145	91	83
Idaho	44	62	53	120	85
Iowa	94	105	105	112	100
Kansas	435	410	420	97	102
Minnesota	16	24	17	106	71
Nebraska	485	590	505	104	86
Oklahoma	44	44	38	86	86
South Dakota	63	72	75	119	104
Texas	445	440	370	83	84
Washington	32	55	56	175	102
Other States	61	60	58	95	97
United States	1,967	2,100	1,925	98	92

Cattle Placed on 1,000+ Capacity Feedlots – United States

Million head



Cattle Placed on Feed by Weight Group on 1,000+ Capacity Feedlots and Month – States and United States: 2021 and 2022

State	During November 2021							
	Under 600 lbs	600-699 lbs	700-799 lbs	800-899 lbs	900+ lbs ¹	900-999 lbs	1,000+ lbs	Total
	(1,000 head)	(1,000 head)	(1,000 head)	(1,000 head)	(1,000 head)	(1,000 head)	(1,000 head)	(1,000 head)
Colorado	50	35	30	25	20	(D)	(D)	160
Kansas	70	110	125	85	45	(D)	(D)	435
Nebraska	95	120	90	85	95	(D)	(D)	485
Texas	180	120	85	45	15	(D)	(D)	445
Other States ...	170	100	70	57	45	(D)	(D)	442
United States ..	565	485	400	297	(X)	130	90	1,967
State	During October 2022							
	Under 600 lbs	600-699 lbs	700-799 lbs	800-899 lbs	900+ lbs ¹	900-999 lbs	1,000+ lbs	Total
	(1,000 head)	(1,000 head)	(1,000 head)	(1,000 head)	(1,000 head)	(1,000 head)	(1,000 head)	(1,000 head)
Colorado	35	35	35	40	30	(D)	(D)	175
Kansas	65	90	125	85	45	(D)	(D)	410
Nebraska	135	120	95	115	125	(D)	(D)	590
Texas	150	110	110	55	15	(D)	(D)	440
Other States ...	160	105	80	85	55	(D)	(D)	485
United States ..	545	460	445	380	(X)	190	80	2,100
State	During November 2022							
	Under 600 lbs	600-699 lbs	700-799 lbs	800-899 lbs	900+ lbs ¹	900-999 lbs	1,000+ lbs	Total
	(1,000 head)	(1,000 head)	(1,000 head)	(1,000 head)	(1,000 head)	(1,000 head)	(1,000 head)	(1,000 head)
Colorado	45	30	30	20	20	(D)	(D)	145
Kansas	65	105	125	80	45	(D)	(D)	420
Nebraska	100	125	95	85	100	(D)	(D)	505
Texas	145	95	75	40	15	(D)	(D)	370
Other States ...	185	110	80	65	45	(D)	(D)	485
United States ..	540	465	405	290	(X)	135	90	1,925

(D) Withheld to avoid disclosing data for individual operations.

(X) Not applicable.

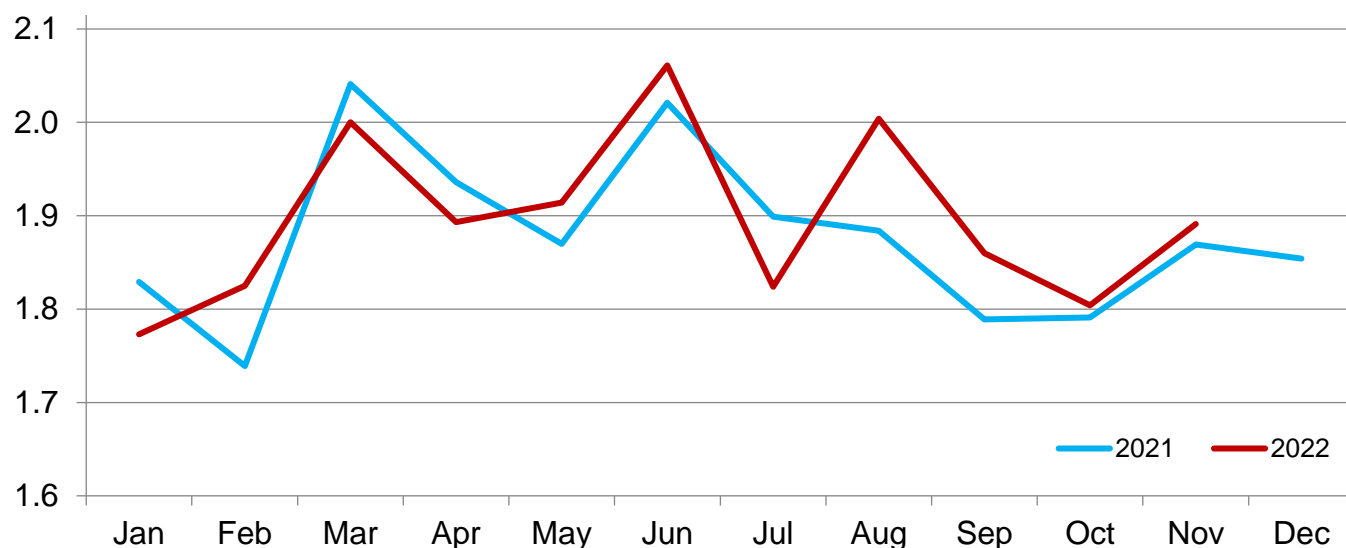
¹ The 900 pounds and greater weight group is the sum of 900-999 pounds and 1,000 pounds and greater weight groups.

Cattle Marketed on 1,000+ Capacity Feedlots by Month – States and United States: 2021 and 2022

State	During November 2021	During October 2022	During November 2022		
			Marketings	Percent of previous year	Percent of previous month
	(1,000 head)	(1,000 head)	(1,000 head)	(percent)	(percent)
Arizona	29	21	25	86	119
California	49	42	53	108	126
Colorado	165	170	170	103	100
Idaho	43	45	42	98	93
Iowa	92	83	94	102	113
Kansas	455	430	410	90	95
Minnesota	15	13	16	107	123
Nebraska	450	450	480	107	107
Oklahoma	43	38	47	109	124
South Dakota	57	45	63	111	140
Texas	400	390	410	103	105
Washington	26	34	35	135	103
Other States	45	43	46	102	107
United States	1,869	1,804	1,891	101	105

Cattle Marketed on 1,000+ Capacity Feedlots – United States

Million head



Cattle Other Disappearance on 1,000+ Capacity Feedlots by Month – States and United States: 2021 and 2022

State	During November 2021 (1,000 head)	During October 2022 (1,000 head)	During November 2022		
			Other disappearance (1,000 head)	Percent of previous year (percent)	Percent of previous month (percent)
Arizona	1	1	1	100	100
California	7	7	7	100	100
Colorado	5	5	5	100	100
Idaho	1	2	1	100	50
Iowa	2	2	1	50	50
Kansas	10	10	10	100	100
Minnesota	1	1	1	100	100
Nebraska	15	10	15	100	150
Oklahoma	1	1	1	100	100
South Dakota	1	2	2	200	100
Texas	15	10	10	67	100
Washington	1	1	1	100	100
Other States	1	2	2	200	100
United States	61	54	57	93	106

Terms and Definitions of Cattle on Feed Estimates

Cattle on feed are steers and heifers being fed a ration of grain, silage, hay and/or protein supplement for slaughter market that are expected to produce a carcass that will grade select or better. It excludes cattle being "backgrounded only" for later sale as feeders or later placement in another feedlot.

Placements are steers and heifers put into a feedlot, fed a ration which will produce a carcass that will grade select or better, and are intended for the slaughter market.

Marketings are steers and heifers shipped out of feedlots to a slaughter market.

Other disappearance includes death loss, movement from feedlots to pasture, and shipments to other feedlots for further feeding.

Statistical Methodology

Survey Procedures: During January and July all known feedlots in the United States with capacity of 1,000 or more head are surveyed to provide data for cattle on feed estimates. During the other months, all known feedlots from 16 States are surveyed. The 16 States account for approximately 98 percent of the cattle on feed in feedlots with capacity of 1,000 or more head. Individual State estimates are published monthly for 12 of the 16 States. Data collected from the remaining 4 States are used to establish the "Other States" estimates. These 4 States include Illinois, New Mexico, Oregon, and Wyoming. The "Other States" category represents all cattle on feed with a capacity of 1,000 or more head for the rest of the United States.

Estimating Procedures: These cattle on feed estimates were prepared by the Agricultural Statistics Board after reviewing recommendations and analysis submitted by Regional Field Offices. Regional and State survey data were reviewed for reasonableness with each other and with estimates from the previous month when establishing the current estimates.

Revision Policy: Revisions to previous estimates are made to improve month to month relationships. Estimates for the previous month are subject to revision in all States each month when current estimates are made. In February, all monthly estimates for the previous year, and the number of feedlots and annual marketings from two years ago are reviewed and subject to revisions. The reviews are primarily based on slaughter data, state check-off or brand data, and any other data that may have been received after the original estimate was made. Estimates will also be reviewed after data from the *Census of Agriculture* are available. No revisions will be made after that date and estimates become final.

Reliability: Since all 1,000+ capacity cattle on feed operators in every State are not included in the monthly survey, survey estimates are subject to sampling variability. Survey results are also subject to non-sampling errors such as omissions, duplications, and mistakes in reporting, recording, and processing the data. The effects of these errors cannot be measured directly. They are minimized through rigid quality controls in the data collection process and through a careful review of all reported data for consistency and reasonableness.

To assist users in evaluating the reliability of estimates in this report, the "**Root Mean Square Error**" is shown for selected items in the table on the following page. The "Root Mean Square Error" is a statistical measure based on past performance and is computed using the differences between first and latest estimates. The "Root Mean Square Error" for cattle on feed inventory estimates over the past 24 months is 0.0 percent. This means that chances are 2 out of 3 that the final estimate will not be above or below the current estimate of 11.7 million head by more than 0.0 percent. Chances are 9 out of 10 that the difference will not exceed 0.1 percent.

The table on the following page shows a 24-month record of the range of differences between first and latest estimates for selected items. Using estimates of number on feed as an example, changes between the first estimate and the latest estimate during the past 24 months have averaged 2,000 head, ranging from 0 to 10,000 head. During this period the initial estimate has been above the latest estimate 2 times and has been below the latest estimate 7 times. This does not imply that the initial estimate is likely to understate or overstate final inventory.

Reliability of Monthly Cattle on Feed Estimates

[Based on data for the past 24 months]

Item	Root mean square error	90 percent confidence level	Difference between first and latest estimate				
			Average	Smallest	Largest	Months	
						Below latest	Above latest
	(percent)	(percent)	(1,000)	(1,000)	(1,000)	(number)	(number)
On feed	0.0	0.1	2	0	10	7	2
Placements	0.2	0.3	3	0	8	9	10
Marketings	0.1	0.2	2	0	7	5	8

Information Contacts

Listed below are the commodity specialists in the Livestock Branch of the National Agricultural Statistics Service to contact for additional information. E-mail inquiries may be sent to nass@usda.gov.

Travis Averill, Chief, Livestock Branch	(202) 692-0069
Scott Hollis, Head, Livestock Section	(202) 690-2424
Sherry Bertramsen – Livestock Slaughter	(202) 690-8632
Ryan Cowen – Cattle, Cattle on Feed	(202) 720-3040
Anthony Fischer – Hogs and Pigs	(202) 720-3106
Mike Miller – Milk Production and Milk Cows	(202) 720-3278
Suzanne Richards – Dairy Products	(202) 720-4448
Vacant – Sheep and Goats	(202) 690-3236

Access to NASS Reports

For your convenience, you may access NASS reports and products the following ways:

- All reports are available electronically, at no cost, on the NASS web site: www.nass.usda.gov.
- Both national and state specific reports are available via a free e-mail subscription. To set-up this free subscription, visit www.nass.usda.gov and click on “National” or “State” in upper right corner above “search” box to create an account and select the reports you would like to receive.
- Cornell’s Mann Library has launched a new website housing NASS’s and other agency’s archived reports. The new website, <https://usda.library.cornell.edu>. All email subscriptions containing reports will be sent from the new website, <https://usda.library.cornell.edu>. To continue receiving the reports via e-mail, you will have to go to the new website, create a new account and re-subscribe to the reports. If you need instructions to set up an account or subscribe, they are located at: <https://usda.library.cornell.edu/help>. You should whitelist notifications@usda-esmis.library.cornell.edu in your email client to avoid the emails going into spam/junk folders.

For more information on NASS surveys and reports, call the NASS Agricultural Statistics Hotline at (800) 727-9540, 7:30 a.m. to 4:00 p.m. ET, or e-mail: nass@usda.gov.

The U.S. Department of Agriculture (USDA) prohibits discrimination against its customers, employees, and applicants for employment on the basis of race, color, national origin, age, disability, sex, gender identity, religion, reprisal, and where applicable, political beliefs, marital status, familial or parental status, sexual orientation, or all or part of an individual's income is derived from any public assistance program, or protected genetic information in employment or in any program or activity conducted or funded by the Department. (Not all prohibited bases will apply to all programs and/or employment activities.)

If you wish to file a Civil Rights program complaint of discrimination, complete the [USDA Program Discrimination Complaint Form](#) (PDF), found online at www.ascr.usda.gov/filing-program-discrimination-complaint-usda-customer, or at any USDA office, or call (866) 632-9992 to request the form. You may also write a letter containing all of the information requested in the form. Send your completed complaint form or letter to us by mail at U.S. Department of Agriculture, Director, Office of Adjudication, 1400 Independence Avenue, S.W., Washington, D.C. 20250-9410, by fax (202) 690-7442 or email at program.intake@usda.gov.



U.S. DEPARTMENT OF AGRICULTURE

Hybrid
Event

USDA's 99th Annual Agricultural Outlook Forum



U.S. Agriculture: Seeds of Growth Through Innovation

February 23-24, 2023

You're invited to USDA's largest annual gathering and the agricultural sector's premier event—the 2023 Agricultural Outlook Forum. The Forum will be held in person on February 23-24, 2023, at the Crystal City Gateway Marriott, Arlington, VA and all sessions will be livestreamed.

The program will feature an exceptional lineup of topics and speakers!

- Join Chief Economist Seth Meyer as he unveils USDA's initial forecast for the agricultural economy, commodity markets, and trade in 2023 and discuss U.S. farm income situation.
- Learn from more than 100 subject matter experts, executives and academics as they discuss some of the most pressing issues impacting agriculture and potential solutions.
- Get the latest on supply chain challenges and solutions, climate-smart agriculture and more!

Participants can attend the Agricultural Outlook Forum in person or virtually. Registration is required for both virtual and in-person attendance. There is no cost to attending the Forum virtually.

For more information, see the Forum's [Program at a Glance](#)

Don't miss your chance to hear the latest updates from industry leaders.

[Register Today!](#)