



---

Released November 18, 2022, by the National Agricultural Statistics Service (NASS), Agricultural Statistics Board, United States Department of Agriculture (USDA).

## United States Cattle on Feed Down 2 Percent

**Cattle and calves on feed** for the slaughter market in the United States for feedlots with capacity of 1,000 or more head totaled 11.7 million head on November 1, 2022. The inventory was 2 percent below November 1, 2021.

**Placements** in feedlots during October totaled 2.11 million head, 6 percent below 2021. Placements were the lowest for October since the series began in 1996. Net placements were 2.05 million head. During October, placements of cattle and calves weighing less than 600 pounds were 545,000 head, 600-699 pounds were 465,000 head, 700-799 pounds were 450,000 head, 800-899 pounds were 378,000 head, 900-999 pounds were 190,000 head, and 1,000 pounds and greater were 80,000 head.

**Marketings** of fed cattle during October totaled 1.80 million head, 1 percent above 2021.

**Other disappearance** totaled 54,000 head during October, 5 percent below 2021.

**Cattle on Feed Inventory, Placements, Marketings, and Other Disappearance on 1,000+ Capacity Feedlots – United States: November 1, 2021 and 2022**

Item	2021	2022	Percent of previous year
	(1,000 head)	(1,000 head)	(percent)
On feed October 1 .....	11,550	11,454	99
Placed on feed during October .....	2,246	2,108	94
Fed cattle marketed during October .....	1,791	1,802	101
Other disappearance during October .....	57	54	95
On feed November 1 .....	11,948	11,706	98

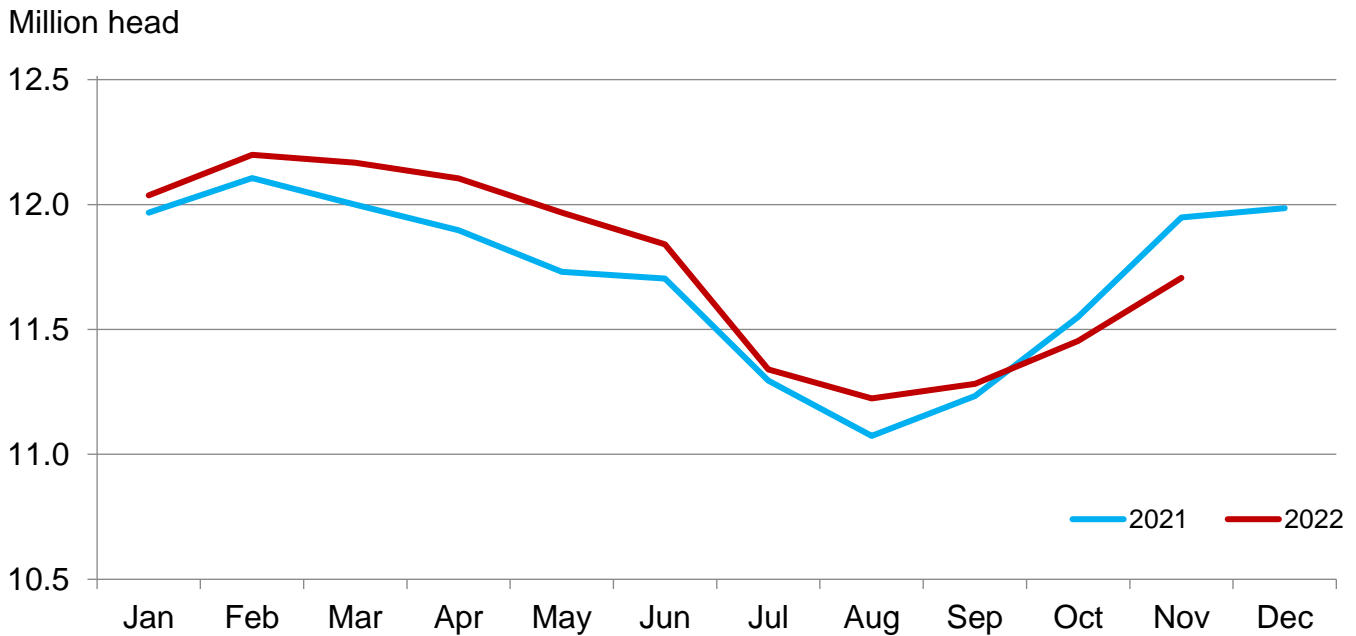
**Cattle on Feed Inventory, Placements, Marketings, and Other Disappearance on 1,000+ Capacity Feedlots – United States: October 1, 2021 and 2022**

Item	2021	2022	Percent of previous year
	(1,000 head)	(1,000 head)	(percent)
On feed September 1 .....	11,234	11,282	100
Placed on feed during September .....	2,163	2,085	96
Fed cattle marketed during September .....	1,789	1,860	104
Other disappearance during September .....	58	53	91
On feed October 1 .....	11,550	11,454	99

**Cattle on Feed Inventory on 1,000+ Capacity Feedlots by Month – States and United States: 2021 and 2022**

State	November 1, 2021	October 1, 2022	November 1, 2022		
			Inventory	Percent of previous year	Percent of previous month
	(1,000 head)	(1,000 head)	(1,000 head)	(percent)	(percent)
Arizona .....	273	274	271	99	99
California .....	545	510	505	93	99
Colorado .....	1,150	1,070	1,070	93	100
Idaho .....	310	290	305	98	105
Iowa .....	610	600	620	102	103
Kansas .....	2,510	2,360	2,340	93	99
Minnesota .....	105	85	95	90	112
Nebraska .....	2,560	2,470	2,600	102	105
Oklahoma .....	300	285	290	97	102
South Dakota .....	230	185	210	91	114
Texas .....	2,850	2,820	2,860	100	101
Washington .....	205	210	230	112	110
Other States .....	300	295	310	103	105
United States .....	11,948	11,454	11,706	98	102

**Cattle on Feed Inventory on 1,000+ Capacity Feedlots – United States**

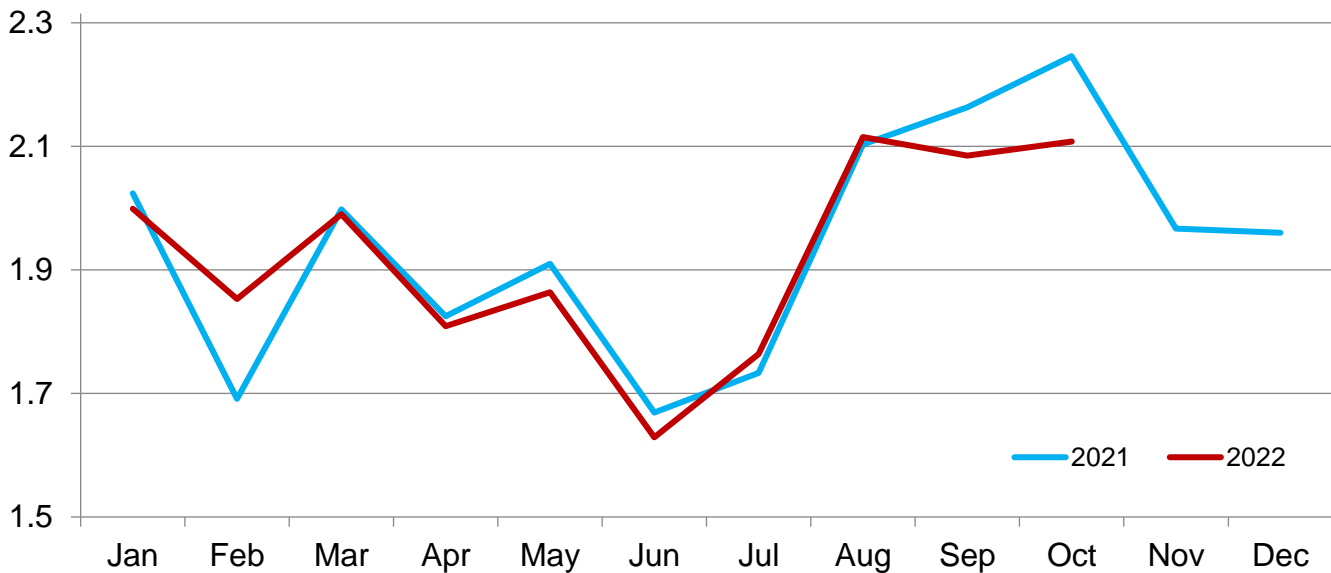


**Cattle Placed on Feed on 1,000+ Capacity Feedlots by Month – States and United States: 2021 and 2022**

State	During October 2021 (1,000 head)	During September 2022 (1,000 head)	During October 2022		
			Placements (1,000 head)	Percent of previous year (percent)	Percent of previous month (percent)
Arizona .....	24	19	19	79	100
California .....	52	45	44	85	98
Colorado .....	185	210	175	95	83
Idaho .....	50	61	62	124	102
Iowa .....	115	85	103	90	121
Kansas .....	435	445	420	97	94
Minnesota .....	29	14	24	83	171
Nebraska .....	625	590	590	94	100
Oklahoma .....	49	52	44	90	85
South Dakota .....	76	45	72	95	160
Texas .....	510	410	440	86	107
Washington .....	33	45	55	167	122
Other States .....	63	64	60	95	94
United States .....	2,246	2,085	2,108	94	101

**Cattle Placed on 1,000+ Capacity Feedlots – United States**

Million head



**Cattle Placed on Feed by Weight Group on 1,000+ Capacity Feedlots and Month – States and United States: 2021 and 2022**

State	During October 2021							
	Under 600 lbs	600-699 lbs	700-799 lbs	800-899 lbs	900+ lbs <sup>1</sup>	900-999 lbs	1,000+ lbs	Total
	(1,000 head)	(1,000 head)	(1,000 head)	(1,000 head)	(1,000 head)	(1,000 head)	(1,000 head)	(1,000 head)
Colorado .....	35	35	35	45	35	(D)	(D)	185
Kansas .....	65	95	135	95	45	(D)	(D)	435
Nebraska .....	145	130	95	130	125	(D)	(D)	625
Texas .....	170	130	125	70	15	(D)	(D)	510
Other States ...	160	110	80	86	55	(D)	(D)	491
United States ..	575	500	470	426	(X)	190	85	2,246
State	During September 2022							
	Under 600 lbs	600-699 lbs	700-799 lbs	800-899 lbs	900+ lbs <sup>1</sup>	900-999 lbs	1,000+ lbs	Total
	(1,000 head)	(1,000 head)	(1,000 head)	(1,000 head)	(1,000 head)	(1,000 head)	(1,000 head)	(1,000 head)
Colorado .....	30	25	45	60	50	(D)	(D)	210
Kansas .....	65	95	130	100	55	(D)	(D)	445
Nebraska .....	65	60	105	170	190	(D)	(D)	590
Texas .....	165	105	85	45	10	(D)	(D)	410
Other States ...	120	45	75	110	80	(D)	(D)	430
United States ..	445	330	440	485	(X)	290	95	2,085
State	During October 2022							
	Under 600 lbs	600-699 lbs	700-799 lbs	800-899 lbs	900+ lbs <sup>1</sup>	900-999 lbs	1,000+ lbs	Total
	(1,000 head)	(1,000 head)	(1,000 head)	(1,000 head)	(1,000 head)	(1,000 head)	(1,000 head)	(1,000 head)
Colorado .....	35	35	35	40	30	(D)	(D)	175
Kansas .....	65	95	130	85	45	(D)	(D)	420
Nebraska .....	135	120	95	115	125	(D)	(D)	590
Texas .....	150	110	110	55	15	(D)	(D)	440
Other States ...	160	105	80	83	55	(D)	(D)	483
United States ..	545	465	450	378	(X)	190	80	2,108

(D) Withheld to avoid disclosing data for individual operations.

(X) Not applicable.

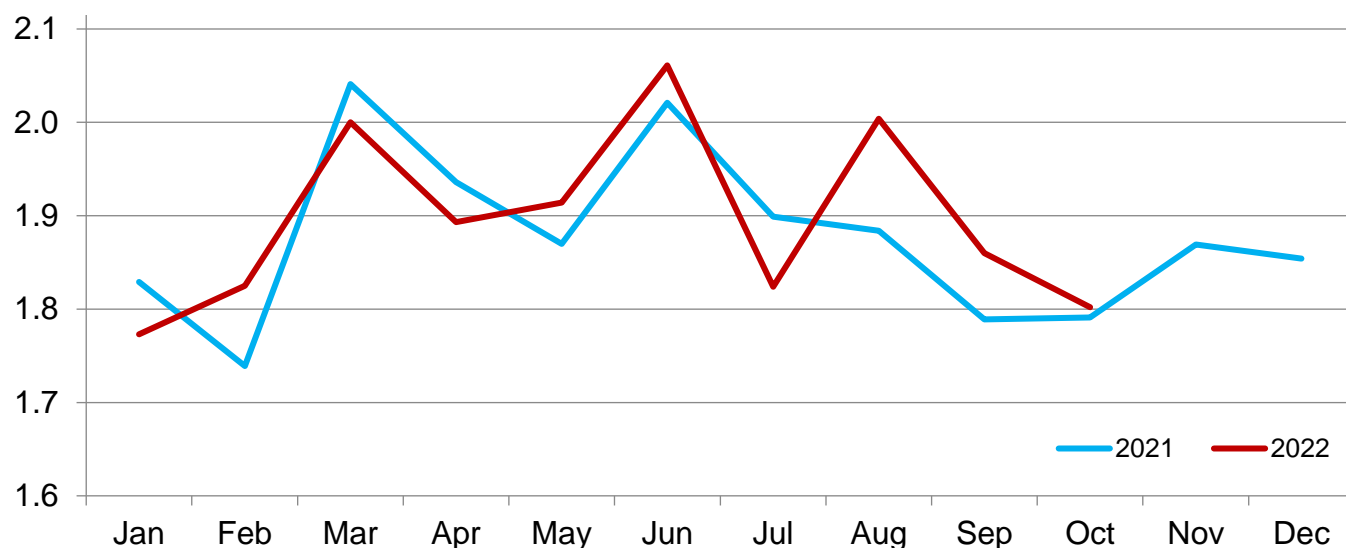
<sup>1</sup> The 900 pounds and greater weight group is the sum of 900-999 pounds and 1,000 pounds and greater weight groups.

**Cattle Marketed on 1,000+ Capacity Feedlots by Month – States and United States: 2021 and 2022**

State	During October 2021	During September 2022	During October 2022		
			Marketings	Percent of previous year	Percent of previous month
	(1,000 head)	(1,000 head)	(1,000 head)	(percent)	(percent)
Arizona .....	20	21	21	105	100
California .....	40	48	42	105	88
Colorado .....	160	165	170	106	103
Idaho .....	44	44	45	102	102
Iowa .....	103	73	81	79	111
Kansas .....	445	455	430	97	95
Minnesota .....	13	18	13	100	72
Nebraska .....	435	480	450	103	94
Oklahoma .....	43	45	38	88	84
South Dakota .....	45	34	45	100	132
Texas .....	375	400	390	104	98
Washington .....	27	34	34	126	100
Other States .....	41	43	43	105	100
United States .....	1,791	1,860	1,802	101	97

## Cattle Marketed on 1,000+ Capacity Feedlots – United States

Million head



### Cattle Other Disappearance on 1,000+ Capacity Feedlots by Month – States and United States: 2021 and 2022

State	During October 2021 (1,000 head)	During September 2022 (1,000 head)	During October 2022		
			Other disappearance (1,000 head)	Percent of previous year (percent)	Percent of previous month (percent)
Arizona .....	1	1	1	100	100
California .....	7	7	7	100	100
Colorado .....	5	5	5	100	100
Idaho .....	1	2	2	200	100
Iowa .....	2	2	2	100	100
Kansas .....	10	10	10	100	100
Minnesota .....	1	1	1	100	100
Nebraska .....	10	10	10	100	100
Oklahoma .....	1	2	1	100	50
South Dakota .....	1	1	2	200	200
Texas .....	15	10	10	67	100
Washington .....	1	1	1	100	100
Other States .....	2	1	2	100	200
United States .....	57	53	54	95	102

## Terms and Definitions of Cattle on Feed Estimates

**Cattle on feed** are steers and heifers being fed a ration of grain, silage, hay and/or protein supplement for slaughter market that are expected to produce a carcass that will grade select or better. It excludes cattle being "backgrounded only" for later sale as feeders or later placement in another feedlot.

**Placements** are steers and heifers put into a feedlot, fed a ration which will produce a carcass that will grade select or better, and are intended for the slaughter market.

**Marketings** are steers and heifers shipped out of feedlots to a slaughter market.

**Other disappearance** includes death loss, movement from feedlots to pasture, and shipments to other feedlots for further feeding.

## Statistical Methodology

**Survey Procedures:** During January and July all known feedlots in the United States with capacity of 1,000 or more head are surveyed to provide data for cattle on feed estimates. During the other months, all known feedlots from 16 States are surveyed. The 16 States account for approximately 98 percent of the cattle on feed in feedlots with capacity of 1,000 or more head. Individual State estimates are published monthly for 12 of the 16 States. Data collected from the remaining 4 States are used to establish the "Other States" estimates. These 4 States include Illinois, New Mexico, Oregon, and Wyoming. The "Other States" category represents all cattle on feed with a capacity of 1,000 or more head for the rest of the United States.

**Estimating Procedures:** These cattle on feed estimates were prepared by the Agricultural Statistics Board after reviewing recommendations and analysis submitted by Regional Field Offices. Regional and State survey data were reviewed for reasonableness with each other and with estimates from the previous month when establishing the current estimates.

**Revision Policy:** Revisions to previous estimates are made to improve month to month relationships. Estimates for the previous month are subject to revision in all States each month when current estimates are made. In February, all monthly estimates for the previous year, and the number of feedlots and annual marketings from two years ago are reviewed and subject to revisions. The reviews are primarily based on slaughter data, state check-off or brand data, and any other data that may have been received after the original estimate was made. Estimates will also be reviewed after data from the *Census of Agriculture* are available. No revisions will be made after that date and estimates become final.

**Reliability:** Since all 1,000+ capacity cattle on feed operators in every State are not included in the monthly survey, survey estimates are subject to sampling variability. Survey results are also subject to non-sampling errors such as omissions, duplications, and mistakes in reporting, recording, and processing the data. The effects of these errors cannot be measured directly. They are minimized through rigid quality controls in the data collection process and through a careful review of all reported data for consistency and reasonableness.

To assist users in evaluating the reliability of estimates in this report, the "**Root Mean Square Error**" is shown for selected items in the table on the following page. The "Root Mean Square Error" is a statistical measure based on past performance and is computed using the differences between first and latest estimates. The "Root Mean Square Error" for cattle on feed inventory estimates over the past 24 months is 0.0 percent. This means that chances are 2 out of 3 that the final estimate will not be above or below the current estimate of 11.7 million head by more than 0.0 percent. Chances are 9 out of 10 that the difference will not exceed 0.0 percent.

The table on the following page shows a 24-month record of the range of differences between first and latest estimates for selected items. Using estimates of number on feed as an example, changes between the first estimate and the latest estimate during the past 24 months have averaged 2,000 head, ranging from 0 to 6,000 head. During this period the initial estimate has been above the latest estimate 1 time and has been below the latest estimate 7 times. This does not imply that the initial estimate is likely to understate or overstate final inventory.

## Reliability of Monthly Cattle on Feed Estimates

[Based on data for the past 24 months]

Item	Root mean square error	90 percent confidence level	Difference between first and latest estimate				
			Average	Smallest	Largest	Months	
						Below latest	Above latest
	(percent)	(percent)	(1,000)	(1,000)	(1,000)	(number)	(number)
On feed .....	0.0	0.0	2	0	6	7	1
Placements .....	0.2	0.3	3	0	7	9	9
Marketings .....	0.1	0.2	1	0	7	4	8

## Information Contacts

Listed below are the commodity specialists in the Livestock Branch of the National Agricultural Statistics Service to contact for additional information. E-mail inquiries may be sent to [nass@usda.gov](mailto:nass@usda.gov).

Travis Averill, Chief, Livestock Branch .....	(202) 692-0069
Scott Hollis, Head, Livestock Section .....	(202) 690-2424
Sherry Bertramsen – Livestock Slaughter .....	(202) 690-8632
Ryan Cowen – Cattle, Cattle on Feed .....	(202) 720-3040
Anthony Fischer – Hogs and Pigs .....	(202) 720-3106
Mike Miller – Milk Production and Milk Cows .....	(202) 720-3278
Suzanne Richards – Dairy Products .....	(202) 720-4448
Vacant – Sheep and Goats .....	(202) 690-3236



## Access to NASS Reports

For your convenience, you may access NASS reports and products the following ways:

- All reports are available electronically, at no cost, on the NASS web site: [www.nass.usda.gov](http://www.nass.usda.gov).
- Both national and state specific reports are available via a free e-mail subscription. To set-up this free subscription, visit [www.nass.usda.gov](http://www.nass.usda.gov) and click on “National” or “State” in upper right corner above “search” box to create an account and select the reports you would like to receive.
- Cornell’s Mann Library has launched a new website housing NASS’s and other agency’s archived reports. The new website, <https://usda.library.cornell.edu>. All email subscriptions containing reports will be sent from the new website, <https://usda.library.cornell.edu>. To continue receiving the reports via e-mail, you will have to go to the new website, create a new account and re-subscribe to the reports. If you need instructions to set up an account or subscribe, they are located at: <https://usda.library.cornell.edu/help>. You should whitelist [notifications@usda-esmis.library.cornell.edu](mailto:notifications@usda-esmis.library.cornell.edu) in your email client to avoid the emails going into spam/junk folders.

For more information on NASS surveys and reports, call the NASS Agricultural Statistics Hotline at (800) 727-9540, 7:30 a.m. to 4:00 p.m. ET, or e-mail: [nass@usda.gov](mailto:nass@usda.gov).

The U.S. Department of Agriculture (USDA) prohibits discrimination against its customers, employees, and applicants for employment on the basis of race, color, national origin, age, disability, sex, gender identity, religion, reprisal, and where applicable, political beliefs, marital status, familial or parental status, sexual orientation, or all or part of an individual's income is derived from any public assistance program, or protected genetic information in employment or in any program or activity conducted or funded by the Department. (Not all prohibited bases will apply to all programs and/or employment activities.)

If you wish to file a Civil Rights program complaint of discrimination, complete the [USDA Program Discrimination Complaint Form](#) (PDF), found online at [www.ascr.usda.gov/filing-program-discrimination-complaint-usda-customer](http://www.ascr.usda.gov/filing-program-discrimination-complaint-usda-customer), or at any USDA office, or call (866) 632-9992 to request the form. You may also write a letter containing all of the information requested in the form. Send your completed complaint form or letter to us by mail at U.S. Department of Agriculture, Director, Office of Adjudication, 1400 Independence Avenue, S.W., Washington, D.C. 20250-9410, by fax (202) 690-7442 or email at [program.intake@usda.gov](mailto:program.intake@usda.gov).