



Cattle on Feed

ISSN: 1948-9080

Released October 21, 2022, by the National Agricultural Statistics Service (NASS), Agricultural Statistics Board, United States Department of Agriculture (USDA).

United States Cattle on Feed Down 1 Percent

Cattle and calves on feed for the slaughter market in the United States for feedlots with capacity of 1,000 or more head totaled 11.4 million head on October 1, 2022. The inventory was 1 percent below October 1, 2021. The inventory included 6.90 million steers and steer calves, down 2 percent from the previous year. This group accounted for 60 percent of the total inventory. Heifers and heifer calves accounted for 4.55 million head, up 1 percent from 2021.

Placements in feedlots during September totaled 2.08 million head, 4 percent below 2021. Net placements were 2.03 million head. During September, placements of cattle and calves weighing less than 600 pounds were 445,000 head, 600-699 pounds were 330,000 head, 700-799 pounds were 440,000 head, 800-899 pounds were 480,000 head, 900-999 pounds were 290,000 head, and 1,000 pounds and greater were 95,000 head.

Marketings of fed cattle during September totaled 1.86 million head, 4 percent above 2021.

Other disappearance totaled 53,000 head during September, 9 percent below 2021.

Cattle on Feed Inventory, Placements, Marketings, and Other Disappearance on 1,000+ Capacity Feedlots – United States: October 1, 2021 and 2022

Item	2021	2022	Percent of previous year	
	(1,000 head)	(1,000 head)	(percent)	
On feed September 1	11,234	11,282	100	
Placed on feed during September	2,163	2,080	96	
Fed cattle marketed during September	1,789	1,860	104	
Other disappearance during September	58	53	91	
On feed October 1	11,550	11,449	99	

Cattle on Feed Inventory, Placements, Marketings, and Other Disappearance on 1,000+ Capacity Feedlots – United States: September 1, 2021 and 2022

Item	2021	2022	Percent of previous year	
	(1,000 head)	(1,000 head)	(percent)	
On feed August 1	11,074	11,224	101	
Placed on feed during August	2,103	2,115	101	
Fed cattle marketed during August	1,884	2,004	106	
Other disappearance during August	59	53	90	
On feed September 1	11,234	11,282	100	

Cattle on Feed by Class on 1,000+ Capacity Feedlots – United States: October 1, 2021 and 2022

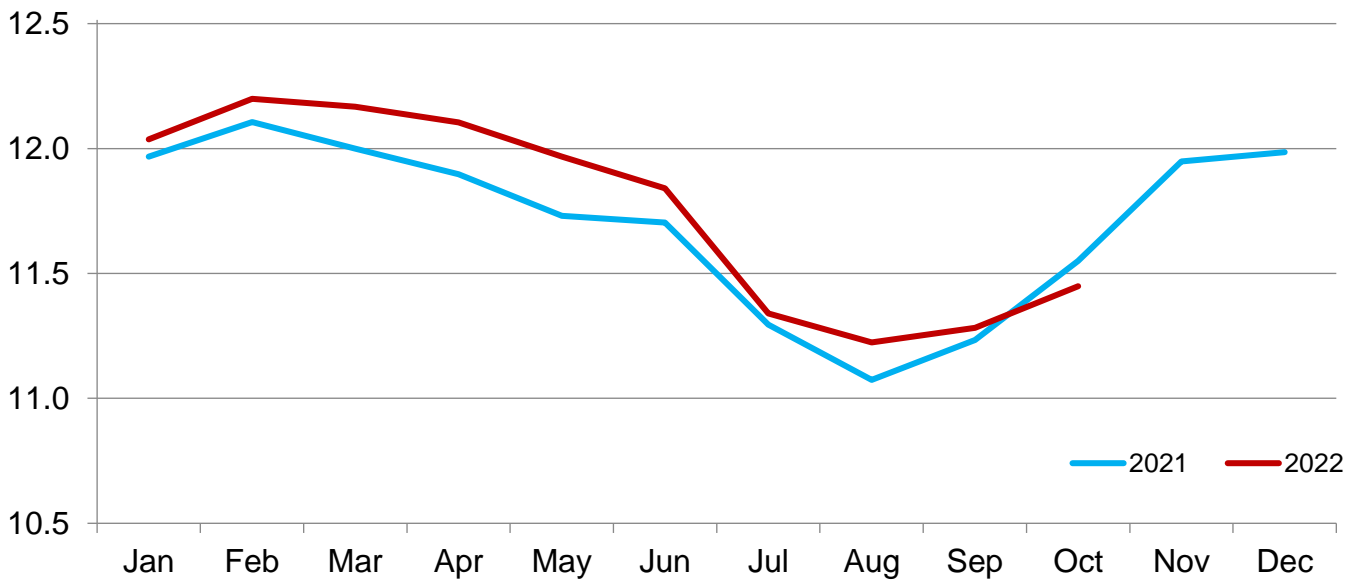
Item	2021	2022	Percent of	
			previous year	inventory
			(percent)	(percent)
Class on feed October 1	(1,000 head)	(1,000 head)	(percent)	(percent)
Steers and steer calves	7,065	6,899	98	60
Heifers and heifer calves	4,485	4,550	101	40

Cattle on Feed Inventory on 1,000+ Capacity Feedlots by Month – States and United States: 2021 and 2022

State	October 1, 2021	September 1, 2022	October 1, 2022		
			Inventory	Percent of previous year	Percent of previous month
	(1,000 head)	(1,000 head)	(1,000 head)	(percent)	(percent)
Arizona	270	277	274	101	99
California	540	520	510	94	98
Colorado	1,130	1,030	1,070	95	104
Idaho	305	275	290	95	105
Iowa	600	590	600	100	102
Kansas	2,530	2,380	2,360	93	99
Minnesota	90	90	85	94	94
Nebraska	2,380	2,370	2,470	104	104
Oklahoma	295	280	285	97	102
South Dakota	200	175	185	93	106
Texas	2,730	2,820	2,820	103	100
Washington	200	200	205	103	103
Other States	280	275	295	105	107
United States	11,550	11,282	11,449	99	101

Cattle on Feed Inventory on 1,000+ Capacity Feedlots – United States

Million head

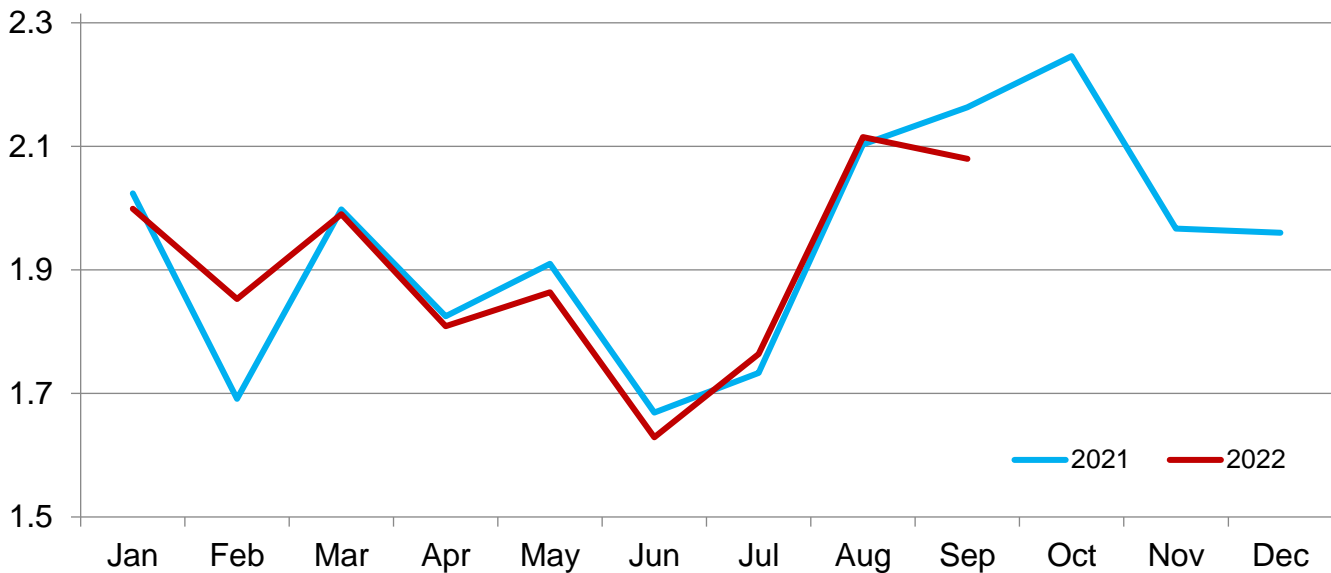


Cattle Placed on Feed on 1,000+ Capacity Feedlots by Month – States and United States: 2021 and 2022

State	During September 2021 (1,000 head)	During August 2022 (1,000 head)	During September 2022		
			Placements (1,000 head)	Percent of previous year (percent)	Percent of previous month (percent)
Arizona	21	22	19	90	86
California	63	51	46	73	90
Colorado	220	180	210	95	117
Idaho	57	45	62	109	138
Iowa	80	89	85	106	96
Kansas	505	535	445	88	83
Minnesota	19	18	14	74	78
Nebraska	545	570	590	108	104
Oklahoma	68	49	52	76	106
South Dakota	44	43	45	102	105
Texas	450	430	410	91	95
Washington	35	32	38	109	119
Other States	56	51	64	114	125
United States	2,163	2,115	2,080	96	98

Cattle Placed on 1,000+ Capacity Feedlots – United States

Million head



Cattle Placed on Feed by Weight Group on 1,000+ Capacity Feedlots and Month – States and United States: 2021 and 2022

State	During September 2021							
	Under 600 lbs	600-699 lbs	700-799 lbs	800-899 lbs	900+ lbs ¹	900-999 lbs	1,000+ lbs	Total
	(1,000 head)	(1,000 head)	(1,000 head)	(1,000 head)	(1,000 head)	(1,000 head)	(1,000 head)	(1,000 head)
Colorado	30	25	50	60	55	(D)	(D)	220
Kansas	65	100	165	120	55	(D)	(D)	505
Nebraska	55	55	100	160	175	(D)	(D)	545
Texas	165	130	100	45	10	(D)	(D)	450
Other States ...	120	50	80	113	80	(D)	(D)	443
United States ..	435	360	495	498	(X)	275	100	2,163

State	During August 2022							
	Under 600 lbs	600-699 lbs	700-799 lbs	800-899 lbs	900+ lbs ¹	900-999 lbs	1,000+ lbs	Total
	(1,000 head)	(1,000 head)	(1,000 head)	(1,000 head)	(1,000 head)	(1,000 head)	(1,000 head)	(1,000 head)
Colorado	30	30	35	50	35	(D)	(D)	180
Kansas	65	100	170	135	65	(D)	(D)	535
Nebraska	45	50	110	190	175	(D)	(D)	570
Texas	190	100	80	50	10	(D)	(D)	430
Other States ...	100	40	70	110	80	(D)	(D)	400
United States ..	430	320	465	535	(X)	270	95	2,115

State	During September 2022							
	Under 600 lbs	600-699 lbs	700-799 lbs	800-899 lbs	900+ lbs ¹	900-999 lbs	1,000+ lbs	Total
	(1,000 head)	(1,000 head)	(1,000 head)	(1,000 head)	(1,000 head)	(1,000 head)	(1,000 head)	(1,000 head)
Colorado	30	25	45	60	50	(D)	(D)	210
Kansas	65	95	130	100	55	(D)	(D)	445
Nebraska	65	60	105	170	190	(D)	(D)	590
Texas	165	105	85	45	10	(D)	(D)	410
Other States ...	120	45	75	105	80	(D)	(D)	425
United States ..	445	330	440	480	(X)	290	95	2,080

(D) Withheld to avoid disclosing data for individual operations.

(X) Not applicable.

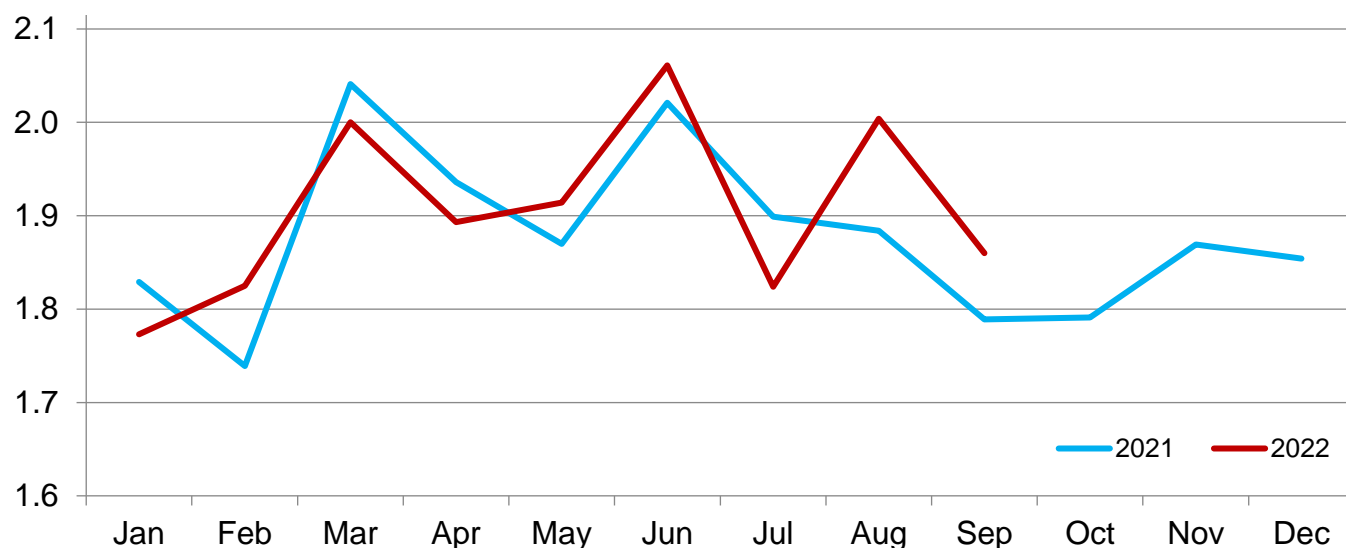
¹ The 900 pounds and greater weight group is the sum of 900-999 pounds and 1,000 pounds and greater weight groups.

Cattle Marketed on 1,000+ Capacity Feedlots by Month – States and United States: 2021 and 2022

State	During September 2021	During August 2022	During September 2022		
			Marketings	Percent of previous year	Percent of previous month
	(1,000 head)	(1,000 head)	(1,000 head)	(percent)	(percent)
Arizona	19	23	21	111	91
California	45	69	49	109	71
Colorado	165	185	165	100	89
Idaho	41	44	45	110	102
Iowa	67	78	73	109	94
Kansas	435	485	455	105	94
Minnesota	18	12	18	100	150
Nebraska	435	510	480	110	94
Oklahoma	47	42	45	96	107
South Dakota	43	31	34	79	110
Texas	405	450	400	99	89
Washington	29	31	32	110	103
Other States	40	44	43	108	98
United States	1,789	2,004	1,860	104	93

Cattle Marketed on 1,000+ Capacity Feedlots – United States

Million head



Cattle Other Disappearance on 1,000+ Capacity Feedlots by Month – States and United States: 2021 and 2022

State	During September 2021 (1,000 head)	During August 2022 (1,000 head)	During September 2022		
			Other disappearance (1,000 head)	Percent of previous year (percent)	Percent of previous month (percent)
Arizona	1	1	1	100	100
California	8	7	7	88	100
Colorado	5	5	5	100	100
Idaho	1	1	2	200	200
Iowa	3	1	2	67	200
Kansas	10	10	10	100	100
Minnesota	1	1	1	100	100
Nebraska	10	10	10	100	100
Oklahoma	1	2	2	200	100
South Dakota	1	2	1	100	50
Texas	15	10	10	67	100
Washington	1	1	1	100	100
Other States	1	2	1	100	50
United States	58	53	53	91	100

**Cattle on Feed by Class on 1,000+ Capacity Feedlots by Quarter – States and United States:
2021 and 2022**

State	Steers and steer calves			Heifers and heifer calves		
	Oct 1, 2021	Jul 1, 2022	Oct 1, 2022	Oct 1, 2021	Jul 1, 2022	Oct 1, 2022
	(1,000 Head)	(1,000 Head)	(1,000 Head)	(1,000 Head)	(1,000 Head)	(1,000 Head)
Arizona	265	275	264	5	5	10
California	460	465	435	80	95	75
Colorado	640	570	590	490	490	480
Idaho	165	150	155	140	130	135
Iowa	460	445	465	140	135	135
Kansas	1,380	1,230	1,270	1,150	1,120	1,090
Minnesota	75	75	70	15	15	15
Nebraska	1,400	1,480	1,490	980	890	980
Oklahoma	160	145	155	135	125	130
South Dakota	120	105	105	80	65	80
Texas	1,660	1,680	1,610	1,070	1,180	1,210
Washington	100	100	105	100	100	100
Other States	180	175	185	100	95	110
United States	7,065	6,895	6,899	4,485	4,445	4,550

Terms and Definitions of Cattle on Feed Estimates

Cattle on feed are steers and heifers being fed a ration of grain, silage, hay and/or protein supplement for slaughter market that are expected to produce a carcass that will grade select or better. It excludes cattle being "backgrounded only" for later sale as feeders or later placement in another feedlot.

Placements are steers and heifers put into a feedlot, fed a ration which will produce a carcass that will grade select or better, and are intended for the slaughter market.

Marketings are steers and heifers shipped out of feedlots to a slaughter market.

Other disappearance includes death loss, movement from feedlots to pasture, and shipments to other feedlots for further feeding.

Statistical Methodology

Survey Procedures: During January and July all known feedlots in the United States with capacity of 1,000 or more head are surveyed to provide data for cattle on feed estimates. During the other months, all known feedlots from 16 States are surveyed. The 16 States account for approximately 98 percent of the cattle on feed in feedlots with capacity of 1,000 or more head. Individual State estimates are published monthly for 12 of the 16 States. Data collected from the remaining 4 States are used to establish the "Other States" estimates. These 4 States include Illinois, New Mexico, Oregon, and Wyoming. The "Other States" category represents all cattle on feed with a capacity of 1,000 or more head for the rest of the United States.

Estimating Procedures: These cattle on feed estimates were prepared by the Agricultural Statistics Board after reviewing recommendations and analysis submitted by Regional Field Offices. Regional and State survey data were reviewed for reasonableness with each other and with estimates from the previous month when establishing the current estimates.

Revision Policy: Revisions to previous estimates are made to improve month to month relationships. Estimates for the previous month are subject to revision in all States each month when current estimates are made. In February, all monthly estimates for the previous year, and the number of feedlots and annual marketings from two years ago are reviewed and subject to revisions. The reviews are primarily based on slaughter data, state check-off or brand data, and any other data that may have been received after the original estimate was made. Estimates will also be reviewed after data from the *Census of Agriculture* are available. No revisions will be made after that date and estimates become final.

Reliability: Since all 1,000+ capacity cattle on feed operators in every State are not included in the monthly survey, survey estimates are subject to sampling variability. Survey results are also subject to non-sampling errors such as omissions, duplications, and mistakes in reporting, recording, and processing the data. The effects of these errors cannot be measured directly. They are minimized through rigid quality controls in the data collection process and through a careful review of all reported data for consistency and reasonableness.

To assist users in evaluating the reliability of estimates in this report, the "**Root Mean Square Error**" is shown for selected items in the table on the following page. The "Root Mean Square Error" is a statistical measure based on past performance and is computed using the differences between first and latest estimates. The "Root Mean Square Error" for cattle on feed inventory estimates over the past 24 months is 0.0 percent. This means that chances are 2 out of 3 that the final estimate will not be above or below the current estimate of 11.4 million head by more than 0.0 percent. Chances are 9 out of 10 that the difference will not exceed 0.0 percent.

The table on the following page shows a 24-month record of the range of differences between first and latest estimates for selected items. Using estimates of number on feed as an example, changes between the first estimate and the latest estimate during the past 24 months have averaged 1,000 head, ranging from 0 to 6,000 head. During this period the initial estimate has been above the latest estimate 1 time and has been below the latest estimate 6 times. This does not imply that the initial estimate is likely to understate or overstate final inventory.

Reliability of Monthly Cattle on Feed Estimates

[Based on data for the past 24 months]

Item	Root mean square error	90 percent confidence level	Difference between first and latest estimate				
			Average	Smallest	Largest	Months	
						Below latest	Above latest
	(percent)	(percent)	(1,000)	(1,000)	(1,000)	(number)	(number)
On feed	0.0	0.0	1	0	6	6	1
Placements	0.2	0.3	2	0	7	8	9
Marketings	0.1	0.2	1	0	7	4	8

Information Contacts

Listed below are the commodity specialists in the Livestock Branch of the National Agricultural Statistics Service to contact for additional information. E-mail inquiries may be sent to nass@usda.gov.

Travis Averill, Chief, Livestock Branch	(202) 692-0069
Scott Hollis, Head, Livestock Section	(202) 690-2424
Sherry Bertramsen – Livestock Slaughter	(202) 690-8632
Ryan Cowen – Cattle, Cattle on Feed	(202) 720-3040
Anthony Fischer – Hogs and Pigs	(202) 720-3106
Mike Miller – Milk Production and Milk Cows	(202) 720-3278
Suzanne Richards – Dairy Products	(202) 720-4448
Vacant – Sheep and Goats	(202) 690-3236

Access to NASS Reports

For your convenience, you may access NASS reports and products the following ways:

- All reports are available electronically, at no cost, on the NASS web site: www.nass.usda.gov.
- Both national and state specific reports are available via a free e-mail subscription. To set-up this free subscription, visit www.nass.usda.gov and click on “National” or “State” in upper right corner above “search” box to create an account and select the reports you would like to receive.
- Cornell’s Mann Library has launched a new website housing NASS’s and other agency’s archived reports. The new website, <https://usda.library.cornell.edu>. All email subscriptions containing reports will be sent from the new website, <https://usda.library.cornell.edu>. To continue receiving the reports via e-mail, you will have to go to the new website, create a new account and re-subscribe to the reports. If you need instructions to set up an account or subscribe, they are located at: <https://usda.library.cornell.edu/help>. You should whitelist notifications@usda-esmis.library.cornell.edu in your email client to avoid the emails going into spam/junk folders.

For more information on NASS surveys and reports, call the NASS Agricultural Statistics Hotline at (800) 727-9540, 7:30 a.m. to 4:00 p.m. ET, or e-mail: nass@usda.gov.

The U.S. Department of Agriculture (USDA) prohibits discrimination against its customers, employees, and applicants for employment on the basis of race, color, national origin, age, disability, sex, gender identity, religion, reprisal, and where applicable, political beliefs, marital status, familial or parental status, sexual orientation, or all or part of an individual's income is derived from any public assistance program, or protected genetic information in employment or in any program or activity conducted or funded by the Department. (Not all prohibited bases will apply to all programs and/or employment activities.)

If you wish to file a Civil Rights program complaint of discrimination, complete the [USDA Program Discrimination Complaint Form](#) (PDF), found online at www.ascr.usda.gov/filing-program-discrimination-complaint-usda-customer, or at any USDA office, or call (866) 632-9992 to request the form. You may also write a letter containing all of the information requested in the form. Send your completed complaint form or letter to us by mail at U.S. Department of Agriculture, Director, Office of Adjudication, 1400 Independence Avenue, S.W., Washington, D.C. 20250-9410, by fax (202) 690-7442 or email at program.intake@usda.gov.

2022 USDA Fall Virtual Data Users' Meeting

November 15, 2022

FREE AND OPEN TO THE PUBLIC



USDA Fall Data Users' Meeting

Virtual Meeting

November 15, 2022

12:00 – 3:30 p.m. ET

USDA's National Agricultural Statistics Service (NASS) will hold an open forum for users of U.S. domestic and international agriculture data. NASS is organizing the 2022 Fall Data Users' Meeting in cooperation with five other USDA agencies – Agricultural Marketing Service, Economic Research Service, Farm Service Agency, Foreign Agricultural Service, and World Agricultural Outlook Board – and the Census Bureau's Foreign Trade Division. Agency representatives will provide updates on recent and pending changes in statistical and information programs important to agriculture, answer questions, and welcome comments and input from data users. Registration details will be coming soon.