



Cattle on Feed

ISSN: 1948-9080

Released August 19, 2022, by the National Agricultural Statistics Service (NASS), Agricultural Statistics Board, United States Department of Agriculture (USDA).

United States Cattle on Feed Up 1 Percent

Cattle and calves on feed for the slaughter market in the United States for feedlots with capacity of 1,000 or more head totaled 11.2 million head on August 1, 2022. The inventory was 1 percent above August 1, 2021. This is the second highest August 1 inventory since the series began in 1996.

Placements in feedlots during July totaled 1.77 million head, 2 percent above 2021. Net placements were 1.71 million head. During July, placements of cattle and calves weighing less than 600 pounds were 410,000 head, 600-699 pounds were 280,000 head, 700-799 pounds were 400,000 head, 800-899 pounds were 405,000 head, 900-999 pounds were 195,000 head, and 1,000 pounds and greater were 75,000 head.

Marketings of fed cattle during July totaled 1.83 million head, 4 percent below 2021.

Other disappearance totaled 56,000 head during July, 2 percent above 2021.

Cattle on Feed Inventory, Placements, Marketings, and Other Disappearance on 1,000+ Capacity Feedlots – United States: August 1, 2021 and 2022

Item	2021	2022	Percent of previous year
	(1,000 head)	(1,000 head)	(percent)
On feed July 1	11,295	11,340	100
Placed on feed during July	1,733	1,765	102
Fed cattle marketed during July	1,899	1,825	96
Other disappearance during July	55	56	102
On feed August 1	11,074	11,224	101

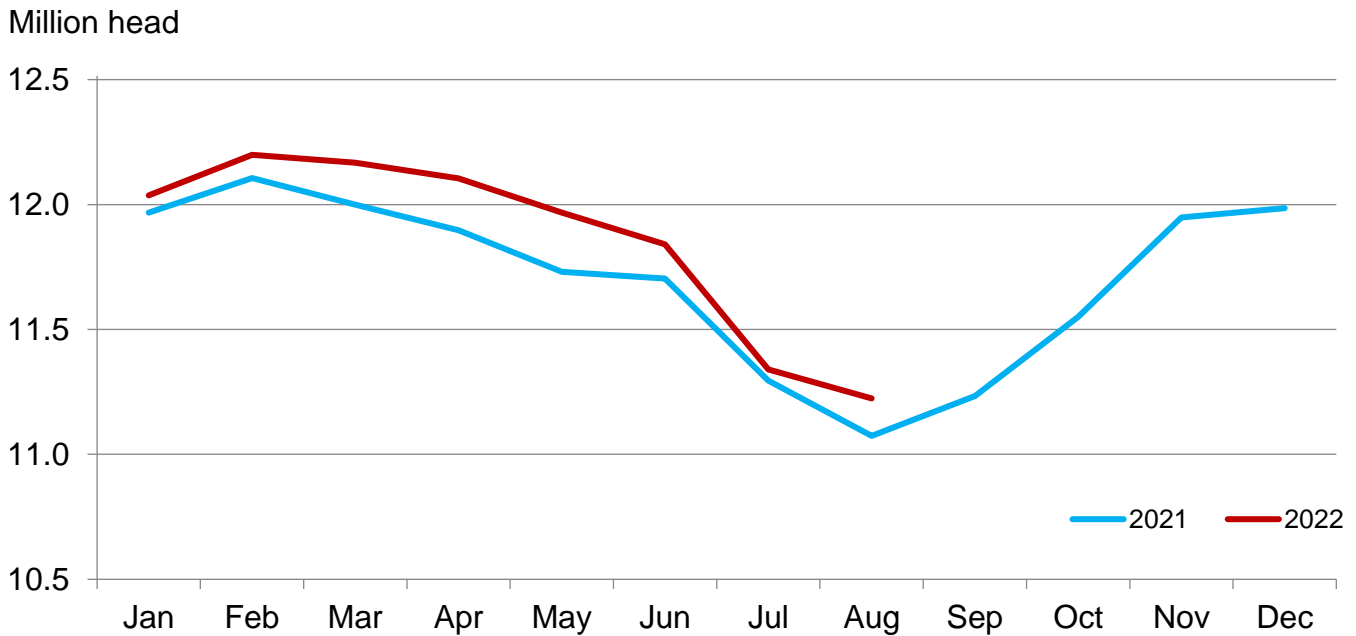
Cattle on Feed Inventory, Placements, Marketings, and Other Disappearance on 1,000+ Capacity Feedlots – United States: July 1, 2021 and 2022

Item	2021	2022	Percent of previous year
	(1,000 head)	(1,000 head)	(percent)
On feed June 1	11,704	11,841	101
Placed on feed during June	1,669	1,629	98
Fed cattle marketed during June	2,021	2,061	102
Other disappearance during June	57	69	121
On feed July 1	11,295	11,340	100

Cattle on Feed Inventory on 1,000+ Capacity Feedlots by Month – States and United States: 2021 and 2022

State	August 1, 2021	July 1, 2022	August 1, 2022		
			Inventory	Percent of previous year	Percent of previous month
	(1,000 head)	(1,000 head)	(1,000 head)	(percent)	(percent)
Arizona	274	280	279	102	100
California	540	560	545	101	97
Colorado	1,040	1,060	1,040	100	98
Idaho	275	280	275	100	98
Iowa	600	580	570	95	98
Kansas	2,410	2,350	2,350	98	100
Minnesota	95	90	85	89	94
Nebraska	2,200	2,370	2,320	105	98
Oklahoma	270	270	275	102	102
South Dakota	195	170	165	85	97
Texas	2,720	2,860	2,850	105	100
Washington	190	200	200	105	100
Other States	265	270	270	102	100
United States	11,074	11,340	11,224	101	99

Cattle on Feed Inventory on 1,000+ Capacity Feedlots – United States

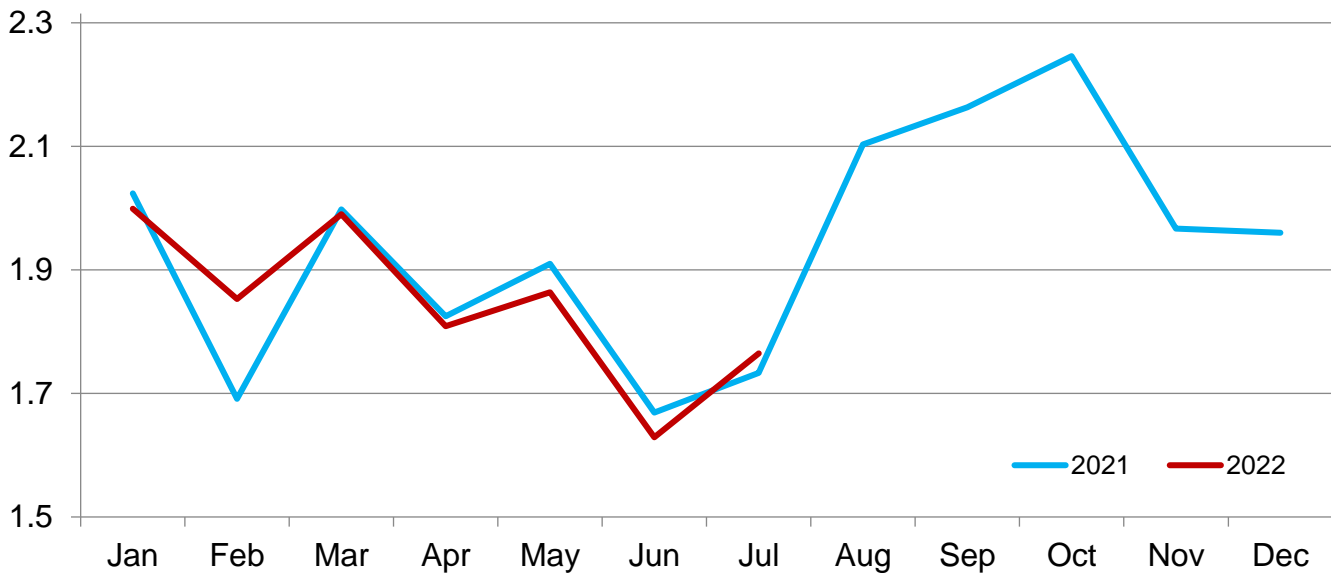


Cattle Placed on Feed on 1,000+ Capacity Feedlots by Month – States and United States: 2021 and 2022

State	During July 2021 (1,000 head)	During June 2022 (1,000 head)	During July 2022		
			Placements (1,000 head)	Percent of previous year (percent)	Percent of previous month (percent)
Arizona	22	21	22	100	105
California	64	59	50	78	85
Colorado	160	140	160	100	114
Idaho	38	29	31	82	107
Iowa	56	60	56	100	93
Kansas	440	380	450	102	118
Minnesota	11	10	10	91	100
Nebraska	435	405	445	102	110
Oklahoma	38	41	48	126	117
South Dakota	21	22	26	124	118
Texas	370	390	395	107	101
Washington	30	28	28	93	100
Other States	48	44	44	92	100
United States	1,733	1,629	1,765	102	108

Cattle Placed on 1,000+ Capacity Feedlots – United States

Million head



Cattle Placed on Feed by Weight Group on 1,000+ Capacity Feedlots and Month – States and United States: 2021 and 2022

State	During July 2021							
	Under 600 lbs	600-699 lbs	700-799 lbs	800-899 lbs	900+ lbs ¹	900-999 lbs	1,000+ lbs	Total
	(1,000 head)	(1,000 head)	(1,000 head)	(1,000 head)	(1,000 head)	(1,000 head)	(1,000 head)	(1,000 head)
Colorado	35	25	35	35	30	(D)	(D)	160
Kansas	55	70	145	115	55	(D)	(D)	440
Nebraska	35	45	95	150	110	(D)	(D)	435
Texas	155	80	75	45	15	(D)	(D)	370
Other States ...	95	35	60	78	60	(D)	(D)	328
United States ..	375	255	410	423	(X)	200	70	1,733
State	During June 2022							
	Under 600 lbs	600-699 lbs	700-799 lbs	800-899 lbs	900+ lbs ¹	900-999 lbs	1,000+ lbs	Total
	(1,000 head)	(1,000 head)	(1,000 head)	(1,000 head)	(1,000 head)	(1,000 head)	(1,000 head)	(1,000 head)
Colorado	30	25	30	30	25	(D)	(D)	140
Kansas	55	70	120	90	45	(D)	(D)	380
Nebraska	30	50	85	125	115	(D)	(D)	405
Texas	160	80	80	50	20	(D)	(D)	390
Other States ...	85	45	55	74	55	(D)	(D)	314
United States ..	360	270	370	369	(X)	175	85	1,629
State	During July 2022							
	Under 600 lbs	600-699 lbs	700-799 lbs	800-899 lbs	900+ lbs ¹	900-999 lbs	1,000+ lbs	Total
	(1,000 head)	(1,000 head)	(1,000 head)	(1,000 head)	(1,000 head)	(1,000 head)	(1,000 head)	(1,000 head)
Colorado	35	30	35	35	25	(D)	(D)	160
Kansas	65	80	140	110	55	(D)	(D)	450
Nebraska	35	50	100	145	115	(D)	(D)	445
Texas	185	85	70	40	15	(D)	(D)	395
Other States ...	90	35	55	75	60	(D)	(D)	315
United States ..	410	280	400	405	(X)	195	75	1,765

(D) Withheld to avoid disclosing data for individual operations.

(X) Not applicable.

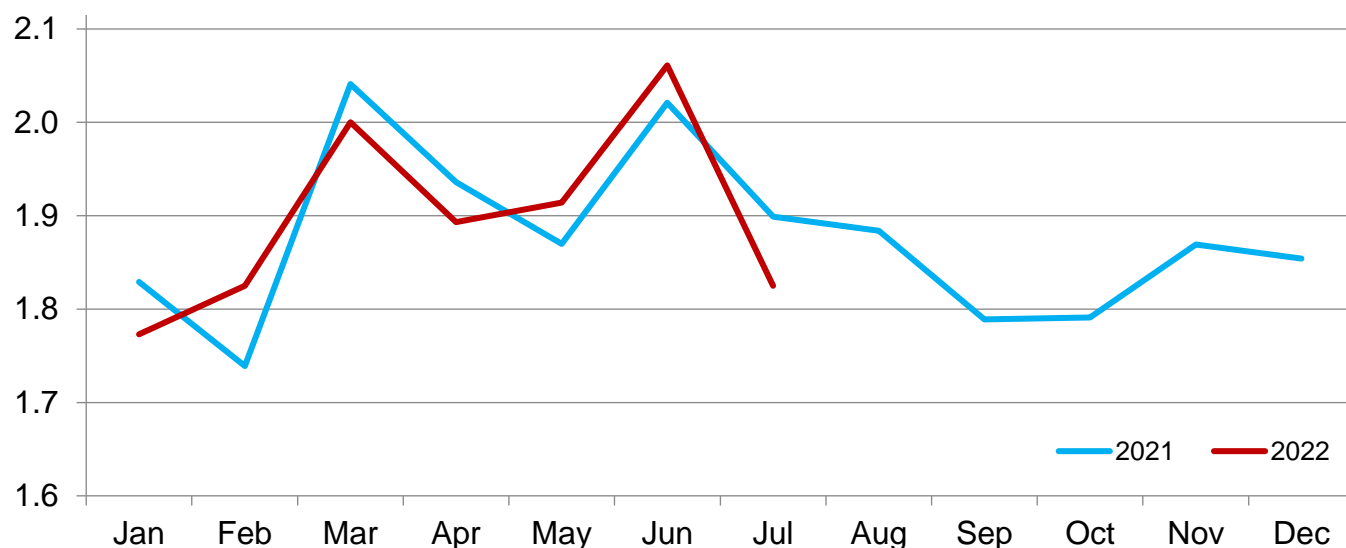
¹ The 900 pounds and greater weight group is the sum of 900-999 pounds and 1,000 pounds and greater weight groups.

Cattle Marketed on 1,000+ Capacity Feedlots by Month – States and United States: 2021 and 2022

State	During July 2021	During June 2022	During July 2022		
			Marketings	Percent of previous year	Percent of previous month
	(1,000 head)	(1,000 head)	(1,000 head)	(percent)	(percent)
Arizona	22	26	22	100	85
California	56	63	59	105	94
Colorado	175	165	175	100	106
Idaho	41	38	35	85	92
Iowa	53	68	64	121	94
Kansas	470	505	440	94	87
Minnesota	15	19	14	93	74
Nebraska	515	545	485	94	89
Oklahoma	42	45	42	100	93
South Dakota	25	43	30	120	70
Texas	410	460	390	95	85
Washington	34	32	27	79	84
Other States	41	52	42	102	81
United States	1,899	2,061	1,825	96	89

Cattle Marketed on 1,000+ Capacity Feedlots – United States

Million head



Cattle Other Disappearance on 1,000+ Capacity Feedlots by Month – States and United States: 2021 and 2022

State	During July 2021 (1,000 head)	During June 2022 (1,000 head)	During July 2022		
			Other disappearance (1,000 head)	Percent of previous year (percent)	Percent of previous month (percent)
Arizona	1	1	1	100	100
California	8	6	6	75	100
Colorado	5	5	5	100	100
Idaho	2	1	1	50	100
Iowa	3	2	2	67	100
Kansas	10	15	10	100	67
Minnesota	1	1	1	100	100
Nebraska	10	20	10	100	50
Oklahoma	1	1	1	100	100
South Dakota	1	4	1	100	25
Texas	10	10	15	150	150
Washington	1	1	1	100	100
Other States	2	2	2	100	100
United States	55	69	56	102	81

Terms and Definitions of Cattle on Feed Estimates

Cattle on feed are steers and heifers being fed a ration of grain, silage, hay and/or protein supplement for slaughter market that are expected to produce a carcass that will grade select or better. It excludes cattle being "backgrounded only" for later sale as feeders or later placement in another feedlot.

Placements are steers and heifers put into a feedlot, fed a ration which will produce a carcass that will grade select or better, and are intended for the slaughter market.

Marketings are steers and heifers shipped out of feedlots to a slaughter market.

Other disappearance includes death loss, movement from feedlots to pasture, and shipments to other feedlots for further feeding.

Statistical Methodology

Survey Procedures: During January and July all known feedlots in the United States with capacity of 1,000 or more head are surveyed to provide data for cattle on feed estimates. During the other months, all known feedlots from 16 States are surveyed. The 16 States account for approximately 98 percent of the cattle on feed in feedlots with capacity of 1,000 or more head. Individual State estimates are published monthly for 12 of the 16 States. Data collected from the remaining 4 States are used to establish the "Other States" estimates. These 4 States include Illinois, New Mexico, Oregon, and Wyoming. The "Other States" category represents all cattle on feed with a capacity of 1,000 or more head for the rest of the United States.

Estimating Procedures: These cattle on feed estimates were prepared by the Agricultural Statistics Board after reviewing recommendations and analysis submitted by Regional Field Offices. Regional and State survey data were reviewed for reasonableness with each other and with estimates from the previous month when establishing the current estimates.

Revision Policy: Revisions to previous estimates are made to improve month to month relationships. Estimates for the previous month are subject to revision in all States each month when current estimates are made. In February, all monthly estimates for the previous year, and the number of feedlots and annual marketings from two years ago are reviewed and subject to revisions. The reviews are primarily based on slaughter data, state check-off or brand data, and any other data that may have been received after the original estimate was made. Estimates will also be reviewed after data from the *Census of Agriculture* are available. No revisions will be made after that date and estimates become final.

Reliability: Since all 1,000+ capacity cattle on feed operators in every State are not included in the monthly survey, survey estimates are subject to sampling variability. Survey results are also subject to non-sampling errors such as omissions, duplications, and mistakes in reporting, recording, and processing the data. The effects of these errors cannot be measured directly. They are minimized through rigid quality controls in the data collection process and through a careful review of all reported data for consistency and reasonableness.

To assist users in evaluating the reliability of estimates in this report, the "**Root Mean Square Error**" is shown for selected items in the table on the following page. The "Root Mean Square Error" is a statistical measure based on past performance and is computed using the differences between first and latest estimates. The "Root Mean Square Error" for cattle on feed inventory estimates over the past 24 months is 0.0 percent. This means that chances are 2 out of 3 that the final estimate will not be above or below the current estimate of 11.2 million head by more than 0.0 percent. Chances are 9 out of 10 that the difference will not exceed 0.0 percent.

The table on the following page shows a 24-month record of the range of differences between first and latest estimates for selected items. Using estimates of number on feed as an example, changes between the first estimate and the latest estimate during the past 24 months have averaged 1,000 head, ranging from 0 to 6,000 head. During this period the initial estimate has been above the latest estimate 1 time and has been below the latest estimate 5 times. This does not imply that the initial estimate is likely to understate or overstate final inventory.

Reliability of Monthly Cattle on Feed Estimates

[Based on data for the past 24 months]

Item	Root mean square error	90 percent confidence level	Difference between first and latest estimate				
			Average	Smallest	Largest	Months	
						Below latest	Above latest
	(percent)	(percent)	(1,000)	(1,000)	(1,000)	(number)	(number)
On feed	0.0	0.0	1	0	6	5	1
Placements	0.2	0.3	2	0	7	7	8
Marketings	0.1	0.2	1	0	7	4	7

Information Contacts

Listed below are the commodity specialists in the Livestock Branch of the National Agricultural Statistics Service to contact for additional information. E-mail inquiries may be sent to nass@usda.gov.

Travis Averill, Chief, Livestock Branch	(202) 692-0069
Scott Hollis, Head, Livestock Section	(202) 690-2424
Sherry Bertramsen – Livestock Slaughter	(202) 690-8632
Ryan Cowen – Cattle, Cattle on Feed	(202) 720-3040
Anthony Fischer – Hogs and Pigs	(202) 720-3106
Logan Hartley-Sanguinett – Sheep and Goats	(202) 690-3236
Mike Miller – Milk Production and Milk Cows	(202) 720-3278
Suzanne Richards – Dairy Products	(202) 720-4448

Access to NASS Reports

For your convenience, you may access NASS reports and products the following ways:

- All reports are available electronically, at no cost, on the NASS web site: www.nass.usda.gov.
- Both national and state specific reports are available via a free e-mail subscription. To set-up this free subscription, visit www.nass.usda.gov and click on “National” or “State” in upper right corner above “search” box to create an account and select the reports you would like to receive.
- Cornell’s Mann Library has launched a new website housing NASS’s and other agency’s archived reports. The new website, <https://usda.library.cornell.edu>. All email subscriptions containing reports will be sent from the new website, <https://usda.library.cornell.edu>. To continue receiving the reports via e-mail, you will have to go to the new website, create a new account and re-subscribe to the reports. If you need instructions to set up an account or subscribe, they are located at: <https://usda.library.cornell.edu/help>. You should whitelist notifications@usda-esmis.library.cornell.edu in your email client to avoid the emails going into spam/junk folders.

For more information on NASS surveys and reports, call the NASS Agricultural Statistics Hotline at (800) 727-9540, 7:30 a.m. to 4:00 p.m. ET, or e-mail: nass@usda.gov.

The U.S. Department of Agriculture (USDA) prohibits discrimination against its customers, employees, and applicants for employment on the basis of race, color, national origin, age, disability, sex, gender identity, religion, reprisal, and where applicable, political beliefs, marital status, familial or parental status, sexual orientation, or all or part of an individual's income is derived from any public assistance program, or protected genetic information in employment or in any program or activity conducted or funded by the Department. (Not all prohibited bases will apply to all programs and/or employment activities.)

If you wish to file a Civil Rights program complaint of discrimination, complete the [USDA Program Discrimination Complaint Form](#) (PDF), found online at www.ascr.usda.gov/filing-program-discrimination-complaint-usda-customer, or at any USDA office, or call (866) 632-9992 to request the form. You may also write a letter containing all of the information requested in the form. Send your completed complaint form or letter to us by mail at U.S. Department of Agriculture, Director, Office of Adjudication, 1400 Independence Avenue, S.W., Washington, D.C. 20250-9410, by fax (202) 690-7442 or email at program.intake@usda.gov.