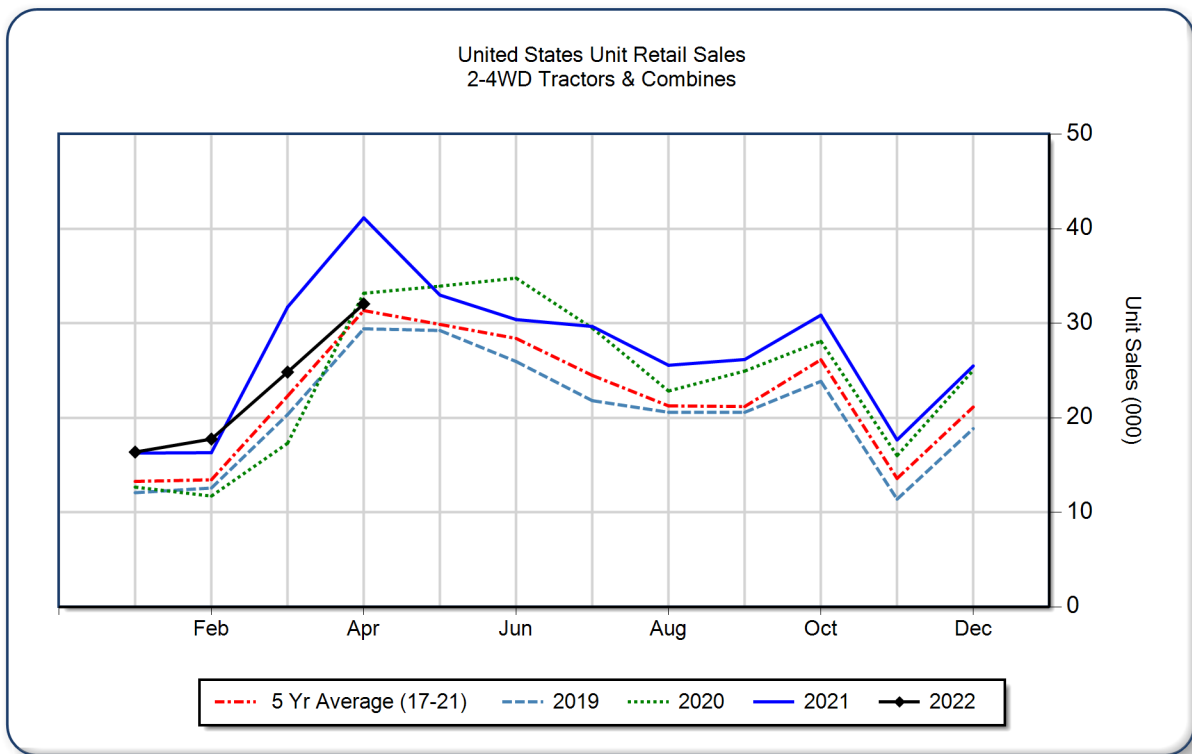


**AEM United States Ag Tractor and Combine Report
 April 2022**

Copyright, AEM. All rights reserved. If data is referenced, please acknowledge AEM as the source.

	April			YTD - April			Beginning Inventory Apr 2022
	2022	2021	%Chg	2022	2021	%Chg	
2WD Farm Tractors							
< 40 HP	22,714	30,282	-25.0	61,842	74,130	-16.6	64,505
40 < 100 HP	6,261	7,779	-19.5	19,779	22,290	-11.3	19,765
100+ HP	2,354	2,281	3.2	7,313	6,676	9.5	6,027
Total 2WD Farm Tractors	31,329	40,342	-22.3	88,934	103,096	-13.7	90,297
4WD Farm Tractors	258	327	-21.1	852	927	-8.1	290
Total Farm Tractors	31,587	40,669	-22.3	89,786	104,023	-13.7	90,587
Self-Prop Combines	459	486	-5.6	1,207	1,412	-14.5	811



The AEM Ag Tractor and Combine Report is provided monthly and is derived from AEM member companies through proprietary statistical reporting programs. The data is provided by AEM members and represents preliminary monthly retail sales of Ag equipment. Separate reports are available for the U.S., Canada and Russia. For more information, please visit: <https://www.aem.org/market-share-statistics/us-ag-tractor-and-combine-reports>. **Attention Media:** To speak with an AEM spokesperson about the data, please contact Sandra Mason at smason@aem.org.