



Cattle on Feed

ISSN: 1948-9080

Released November 19, 2021, by the National Agricultural Statistics Service (NASS), Agricultural Statistics Board, United States Department of Agriculture (USDA).

United States Cattle on Feed Down Slightly

Cattle and calves on feed for the slaughter market in the United States for feedlots with capacity of 1,000 or more head totaled 11.9 million head on November 1, 2021. The inventory was slightly below November 1, 2020.

Placements in feedlots during October totaled 2.25 million head, 2 percent above 2020. Net placements were 2.19 million head. During October, placements of cattle and calves weighing less than 600 pounds were 575,000 head, 600-699 pounds were 500,000 head, 700-799 pounds were 470,000 head, 800-899 pounds were 425,000 head, 900-999 pounds were 190,000 head, and 1,000 pounds and greater were 85,000 head.

Marketings of fed cattle during October totaled 1.79 million head, 5 percent below 2020.

Other disappearance totaled 59,000 head during October, 6 percent below 2020.

Cattle on Feed Inventory, Placements, Marketings, and Other Disappearance on 1,000+ Capacity Feedlots – United States: November 1, 2020 and 2021

Item	2020	2021	Percent of previous year
	(1,000 head)	(1,000 head)	(percent)
On feed October 1	11,717	11,550	99
Placed on feed during October	2,192	2,245	102
Fed cattle marketed during October	1,873	1,788	95
Other disappearance during October	63	59	94
On feed November 1	11,973	11,948	100

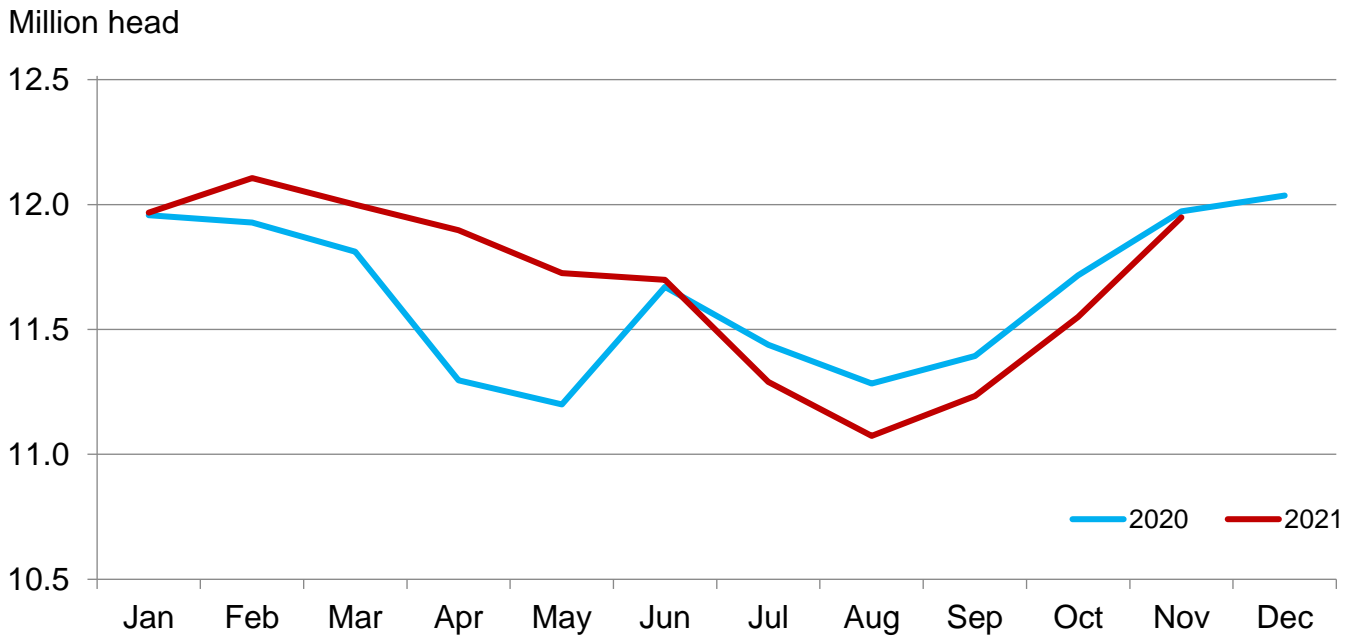
Cattle on Feed Inventory, Placements, Marketings, and Other Disappearance on 1,000+ Capacity Feedlots – United States: October 1, 2020 and 2021

Item	2020	2021	Percent of previous year
	(1,000 head)	(1,000 head)	(percent)
On feed September 1	11,394	11,234	99
Placed on feed during September	2,227	2,163	97
Fed cattle marketed during September	1,846	1,789	97
Other disappearance during September	58	58	100
On feed October 1	11,717	11,550	99

Cattle on Feed Inventory on 1,000+ Capacity Feedlots by Month – States and United States: 2020 and 2021

State	November 1, 2020	October 1, 2021	November 1, 2021		
			Inventory	Percent of previous year	Percent of previous month
	(1,000 head)	(1,000 head)	(1,000 head)	(percent)	(percent)
Arizona	258	270	273	106	101
California	555	540	545	98	101
Colorado	1,120	1,130	1,150	103	102
Idaho	280	305	310	111	102
Iowa	620	600	610	98	102
Kansas	2,520	2,530	2,510	100	99
Minnesota	125	90	105	84	117
Nebraska	2,500	2,380	2,560	102	108
Oklahoma	320	295	300	94	102
South Dakota	225	200	230	102	115
Texas	2,910	2,730	2,850	98	104
Washington	245	200	205	84	103
Other States	295	280	300	102	107
United States	11,973	11,550	11,948	100	103

Cattle on Feed Inventory on 1,000+ Capacity Feedlots – United States

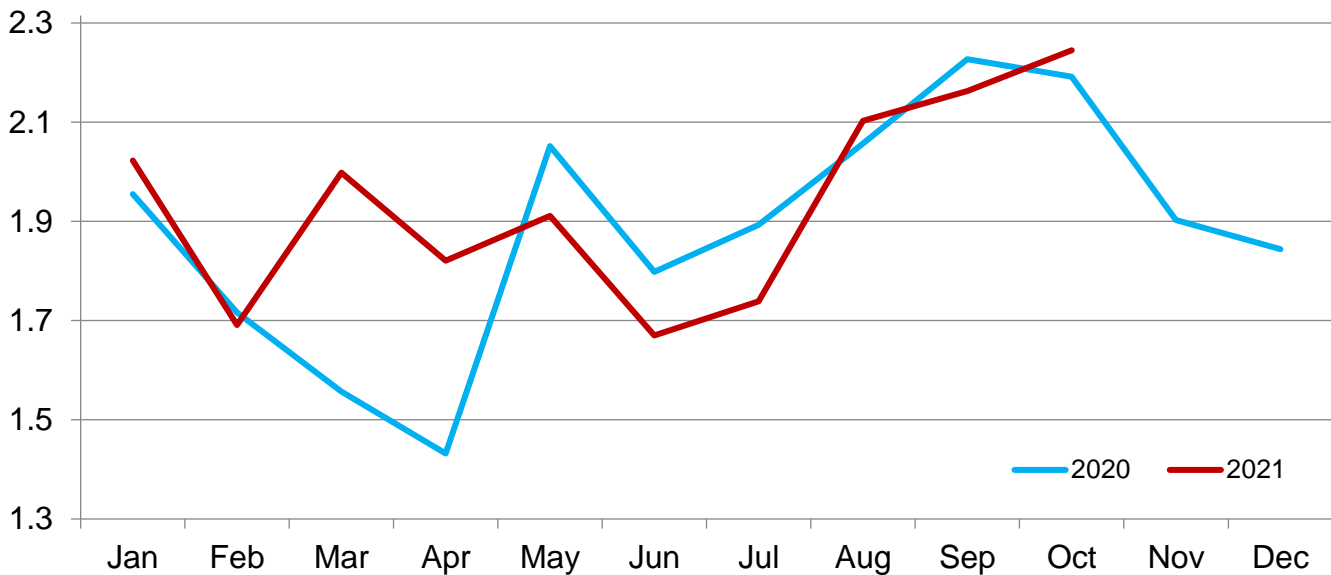


Cattle Placed on Feed on 1,000+ Capacity Feedlots by Month – States and United States: 2020 and 2021

State	During October 2020 (1,000 head)	During September 2021 (1,000 head)	During October 2021		
			Placements (1,000 head)	Percent of previous year (percent)	Percent of previous month (percent)
Arizona	27	21	24	89	114
California	66	63	52	79	83
Colorado	175	220	185	106	84
Idaho	53	57	50	94	88
Iowa	105	80	116	110	145
Kansas	430	505	435	101	86
Minnesota	35	19	29	83	153
Nebraska	560	545	625	112	115
Oklahoma	51	68	49	96	72
South Dakota	84	44	74	88	168
Texas	480	450	510	106	113
Washington	61	35	33	54	94
Other States	65	56	63	97	113
United States	2,192	2,163	2,245	102	104

Cattle Placed on 1,000+ Capacity Feedlots – United States

Million head



Cattle Placed on Feed by Weight Group on 1,000+ Capacity Feedlots and Month – States and United States: 2020 and 2021

State	During October 2020							
	Under 600 lbs	600-699 lbs	700-799 lbs	800-899 lbs	900+ lbs ¹	900-999 lbs	1,000+ lbs	Total
	(1,000 head)	(1,000 head)	(1,000 head)	(1,000 head)	(1,000 head)	(1,000 head)	(1,000 head)	(1,000 head)
Colorado	35	30	35	40	35	(D)	(D)	175
Kansas	65	90	140	90	45	(D)	(D)	430
Nebraska	120	125	90	110	115	(D)	(D)	560
Texas	170	125	115	55	15	(D)	(D)	480
Other States ...	180	125	85	92	65	(D)	(D)	547
United States ..	570	495	465	387	(X)	185	90	2,192
State	During September 2021							
	Under 600 lbs	600-699 lbs	700-799 lbs	800-899 lbs	900+ lbs ¹	900-999 lbs	1,000+ lbs	Total
	(1,000 head)	(1,000 head)	(1,000 head)	(1,000 head)	(1,000 head)	(1,000 head)	(1,000 head)	(1,000 head)
Colorado	30	25	50	60	55	(D)	(D)	220
Kansas	65	100	165	120	55	(D)	(D)	505
Nebraska	55	55	100	160	175	(D)	(D)	545
Texas	165	130	100	45	10	(D)	(D)	450
Other States ...	120	50	80	113	80	(D)	(D)	443
United States ..	435	360	495	498	(X)	275	100	2,163
State	During October 2021							
	Under 600 lbs	600-699 lbs	700-799 lbs	800-899 lbs	900+ lbs ¹	900-999 lbs	1,000+ lbs	Total
	(1,000 head)	(1,000 head)	(1,000 head)	(1,000 head)	(1,000 head)	(1,000 head)	(1,000 head)	(1,000 head)
Colorado	35	35	35	45	35	(D)	(D)	185
Kansas	65	95	135	95	45	(D)	(D)	435
Nebraska	145	130	95	130	125	(D)	(D)	625
Texas	170	130	125	70	15	(D)	(D)	510
Other States ...	160	110	80	85	55	(D)	(D)	490
United States ..	575	500	470	425	(X)	190	85	2,245

(D) Withheld to avoid disclosing data for individual operations.

(X) Not applicable.

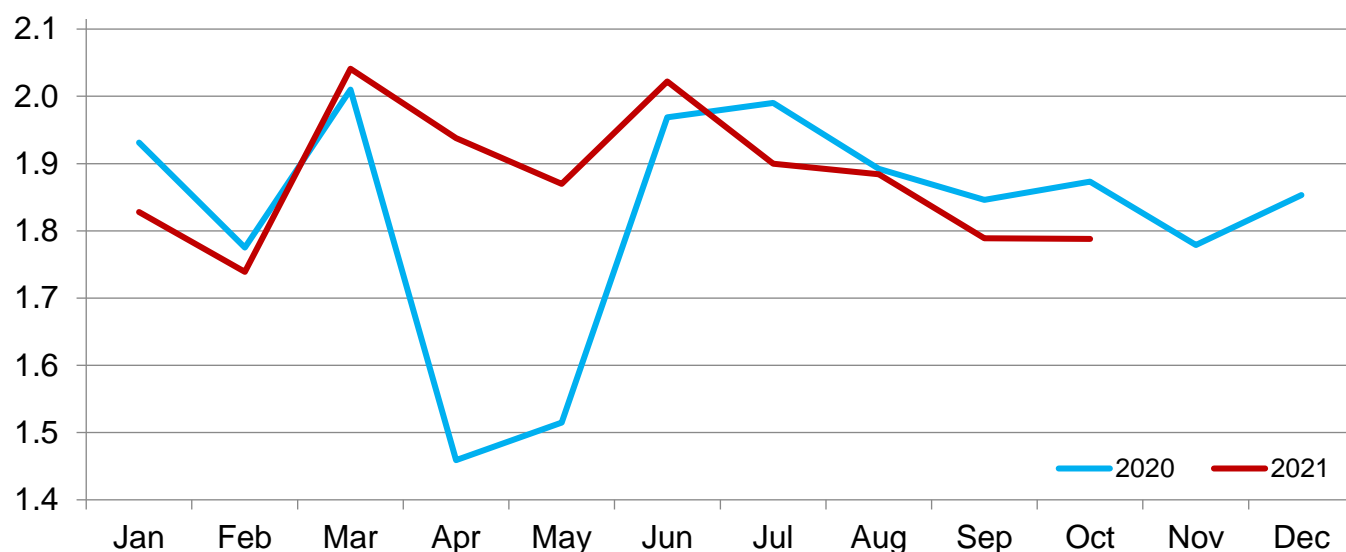
¹ The 900 pounds and greater weight group is the sum of 900-999 pounds and 1,000 pounds and greater weight groups.

Cattle Marketed on 1,000+ Capacity Feedlots by Month – States and United States: 2020 and 2021

State	During October 2020	During September 2021	During October 2021		
			Marketings	Percent of previous year	Percent of previous month
			(1,000 head)	(percent)	(percent)
Arizona	25	19	20	80	105
California	49	45	40	82	89
Colorado	160	165	160	100	97
Idaho	41	41	44	107	107
Iowa	92	67	104	113	155
Kansas	440	435	445	101	102
Minnesota	14	18	13	93	72
Nebraska	460	435	435	95	100
Oklahoma	45	47	43	96	91
South Dakota	48	43	41	85	95
Texas	420	405	375	89	93
Washington	35	29	27	77	93
Other States	44	40	41	93	103
United States	1,873	1,789	1,788	95	100

Cattle Marketed on 1,000+ Capacity Feedlots – United States

Million head



Cattle Other Disappearance on 1,000+ Capacity Feedlots by Month – States and United States: 2020 and 2021

State	During October 2020 (1,000 head)	During September 2021 (1,000 head)	During October 2021		
			Other disappearance (1,000 head)	Percent of previous year (percent)	Percent of previous month (percent)
Arizona	1	1	1	100	100
California	7	8	7	100	88
Colorado	5	5	5	100	100
Idaho	2	1	1	50	100
Iowa	3	3	2	67	67
Kansas	10	10	10	100	100
Minnesota	1	1	1	100	100
Nebraska	10	10	10	100	100
Oklahoma	1	1	1	100	100
South Dakota	1	1	3	300	300
Texas	20	15	15	75	100
Washington	1	1	1	100	100
Other States	1	1	2	200	200
United States	63	58	59	94	102

Terms and Definitions of Cattle on Feed Estimates

Cattle on feed are steers and heifers being fed a ration of grain, silage, hay and/or protein supplement for slaughter market that are expected to produce a carcass that will grade select or better. It excludes cattle being "backgrounded only" for later sale as feeders or later placement in another feedlot.

Placements are steers and heifers put into a feedlot, fed a ration which will produce a carcass that will grade select or better, and are intended for the slaughter market.

Marketings are steers and heifers shipped out of feedlots to a slaughter market.

Other disappearance includes death loss, movement from feedlots to pasture, and shipments to other feedlots for further feeding.

Statistical Methodology

Survey Procedures: During January and July all known feedlots in the United States with capacity of 1,000 or more head are surveyed to provide data for cattle on feed estimates. During the other months, all known feedlots from 16 States are surveyed. The 16 States account for approximately 98 percent of the cattle on feed in feedlots with capacity of 1,000 or more head. Individual State estimates are published monthly for 12 of the 16 States. Data collected from the remaining 4 States are used to establish the "Other States" estimates. These 4 States include Illinois, New Mexico, Oregon, and Wyoming. The "Other States" category represents all cattle on feed with a capacity of 1,000 or more head for the rest of the United States.

Estimating Procedures: These cattle on feed estimates were prepared by the Agricultural Statistics Board after reviewing recommendations and analysis submitted by Regional Field Offices. Regional and State survey data were reviewed for reasonableness with each other and with estimates from the previous month when establishing the current estimates.

Revision Policy: Revisions to previous estimates are made to improve month to month relationships. Estimates for the previous month are subject to revision in all States each month when current estimates are made. In February, all monthly estimates for the previous year, and the number of feedlots and annual marketings from two years ago are reviewed and subject to revisions. The reviews are primarily based on slaughter data, state check-off or brand data, and any other data that may have been received after the original estimate was made. Estimates will also be reviewed after data from the *Census of Agriculture* are available. No revisions will be made after that date and estimates become final.

Reliability: Since all 1,000+ capacity cattle on feed operators in every State are not included in the monthly survey, survey estimates are subject to sampling variability. Survey results are also subject to non-sampling errors such as omissions, duplications, and mistakes in reporting, recording, and processing the data. The effects of these errors cannot be measured directly. They are minimized through rigid quality controls in the data collection process and through a careful review of all reported data for consistency and reasonableness.

To assist users in evaluating the reliability of estimates in this report, the "**Root Mean Square Error**" is shown for selected items in the table on the following page. The "Root Mean Square Error" is a statistical measure based on past performance and is computed using the differences between first and latest estimates. The "Root Mean Square Error" for cattle on feed inventory estimates over the past 24 months is 0.0 percent. This means that chances are 2 out of 3 that the final estimate will not be above or below the current estimate of 11.9 million head by more than 0.0 percent. Chances are 9 out of 10 that the difference will not exceed 0.1 percent.

The table on the following page shows a 24 month record of the range of differences between first and latest estimates for selected items. Using estimates of number on feed as an example, changes between the first estimate and the latest estimate during the past 24 months have averaged 1,000 head, ranging from 0 to 15,000 head. During this period the initial estimate has been above the latest estimate 1 time and has been below the latest estimate 2 times. This does not imply that the initial estimate is likely to understate or overstate final inventory.

Reliability of Monthly Cattle on Feed Estimates

[Based on data for the past 24 months]

Item	Root mean square error	90 percent confidence level	Difference between first and latest estimate				
			Average	Smallest	Largest	Months	
						Below latest	Above latest
	(percent)	(percent)	(1,000)	(1,000)	(1,000)	(number)	(number)
On feed	0.0	0.1	1	0	15	2	1
Placements	0.2	0.4	2	0	15	6	3
Marketings	0.2	0.4	1	0	15	4	2

Information Contacts

Listed below are the commodity specialists in the Livestock Branch of the National Agricultural Statistics Service to contact for additional information. E-mail inquiries may be sent to nass@usda.gov.

Travis Averill, Chief, Livestock Branch	(202) 692-0069
Scott Hollis, Head, Livestock Section	(202) 690-2424
Sherry Bertramsen – Livestock Slaughter	(202) 690-8632
Ryan Cowen – Cattle, Cattle on Feed	(202) 720-3040
Anthony Fischer – Hogs and Pigs	(202) 720-3106
Logan Hartley-Sanguinett – Sheep and Goats	(202) 690-3236
Mike Miller – Milk Production and Milk Cows	(202) 720-3278
Suzanne Richards – Dairy Products	(202) 720-4448

Access to NASS Reports

For your convenience, you may access NASS reports and products the following ways:

- All reports are available electronically, at no cost, on the NASS web site: www.nass.usda.gov
- Both national and state specific reports are available via a free e-mail subscription. To set-up this free subscription, visit www.nass.usda.gov and click on “National” or “State” in upper right corner above “search” box to create an account and select the reports you would like to receive.
- Cornell’s Mann Library has launched a new website housing NASS’s and other agency’s archived reports. The new website, <https://usda.library.cornell.edu>. All email subscriptions containing reports will be sent from the new website, <https://usda.library.cornell.edu>. To continue receiving the reports via e-mail, you will have to go to the new website, create a new account and re-subscribe to the reports. If you need instructions to set up an account or subscribe, they are located at: <https://usda.library.cornell.edu/help>. You should whitelist notifications@usda-esmis.library.cornell.edu in your email client to avoid the emails going into spam/junk folders.

For more information on NASS surveys and reports, call the NASS Agricultural Statistics Hotline at (800) 727-9540, 7:30 a.m. to 4:00 p.m. ET, or e-mail: nass@usda.gov.

The U.S. Department of Agriculture (USDA) prohibits discrimination against its customers, employees, and applicants for employment on the basis of race, color, national origin, age, disability, sex, gender identity, religion, reprisal, and where applicable, political beliefs, marital status, familial or parental status, sexual orientation, or all or part of an individual's income is derived from any public assistance program, or protected genetic information in employment or in any program or activity conducted or funded by the Department. (Not all prohibited bases will apply to all programs and/or employment activities.)

If you wish to file a Civil Rights program complaint of discrimination, complete the [USDA Program Discrimination Complaint Form](#) (PDF), found online at www.ascr.usda.gov/filing-program-discrimination-complaint-usda-customer, or at any USDA office, or call (866) 632-9992 to request the form. You may also write a letter containing all of the information requested in the form. Send your completed complaint form or letter to us by mail at U.S. Department of Agriculture, Director, Office of Adjudication, 1400 Independence Avenue, S.W., Washington, D.C. 20250-9410, by fax (202) 690-7442 or email at program.intake@usda.gov.



United States Department of Agriculture

Registration is Now Open

USDA's 98th Annual
**Agricultural
Outlook Forum**
February 24-25, 2022



Register Today

<https://www.usda.gov/oce/ag-outlook-forum>