



---

Released October 22, 2021, by the National Agricultural Statistics Service (NASS), Agricultural Statistics Board, United States Department of Agriculture (USDA).

## United States Cattle on Feed Down 1 Percent

**Cattle and calves on feed** for the slaughter market in the United States for feedlots with capacity of 1,000 or more head totaled 11.6 million head on October 1, 2021. The inventory was 1 percent below October 1, 2020. This is the second highest October 1 inventory since the series began in 1996. The inventory included 7.07 million steers and steer calves, down 3 percent from the previous year. This group accounted for 61 percent of the total inventory. Heifers and heifer calves accounted for 4.49 million head, up 2 percent from 2020.

**Placements** in feedlots during September totaled 2.16 million head, 3 percent below 2020. Net placements were 2.11 million head. During September, placements of cattle and calves weighing less than 600 pounds were 435,000 head, 600-699 pounds were 360,000 head, 700-799 pounds were 495,000 head, 800-899 pounds were 498,000 head, 900-999 pounds were 275,000 head, and 1,000 pounds and greater were 100,000 head.

**Marketings** of fed cattle during September totaled 1.79 million head, 3 percent below 2020.

**Other disappearance** totaled 58,000 head during September, unchanged from 2020.

**Cattle on Feed Inventory, Placements, Marketings, and Other Disappearance on 1,000+ Capacity Feedlots – United States: October 1, 2020 and 2021**

Item	2020	2021	Percent of previous year	
	(1,000 head)	(1,000 head)	(percent)	
On feed September 1 .....	11,394	11,234	99	
Placed on feed during September .....	2,227	2,163	97	
Fed cattle marketed during September .....	1,846	1,789	97	
Other disappearance during September .....	58	58	100	
On feed October 1 .....	11,717	11,550	99	

**Cattle on Feed Inventory, Placements, Marketings, and Other Disappearance on 1,000+ Capacity Feedlots – United States: September 1, 2020 and 2021**

Item	2020	2021	Percent of previous year	
	(1,000 head)	(1,000 head)	(percent)	
On feed August 1 .....	11,284	11,074	98	
Placed on feed during August .....	2,057	2,103	102	
Fed cattle marketed during August .....	1,892	1,884	100	
Other disappearance during August .....	55	59	107	
On feed September 1 .....	11,394	11,234	99	

**Cattle on Feed by Class on 1,000+ Capacity Feedlots – United States: October 1, 2020 and 2021**

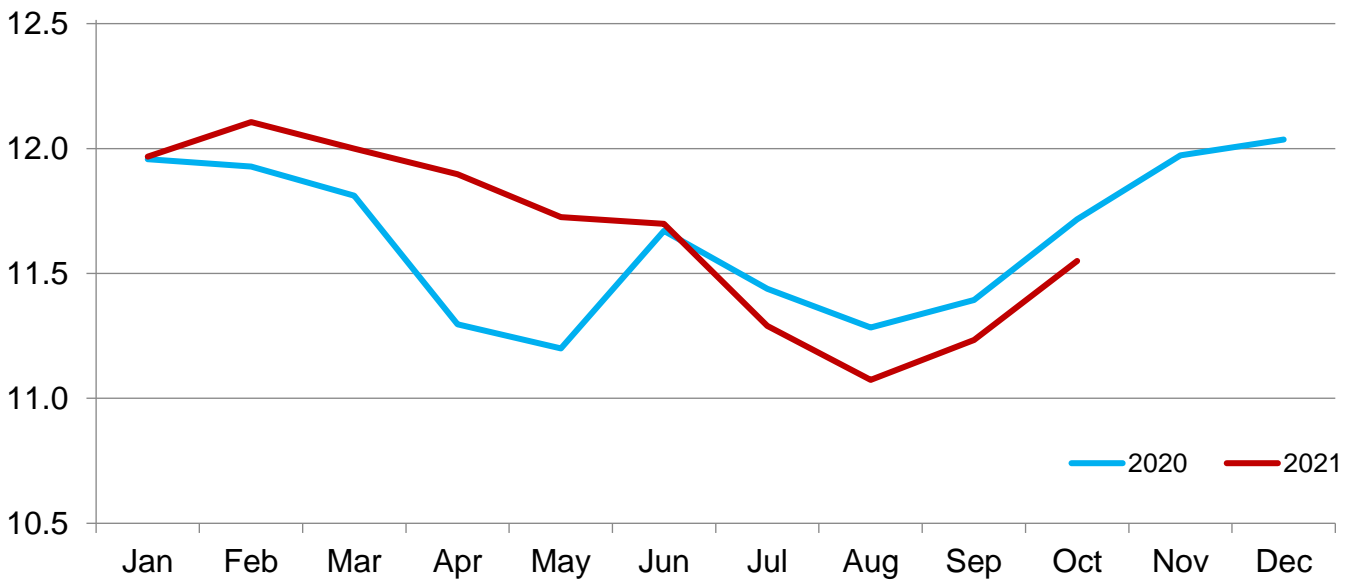
Item	2020	2021	Percent of	
			previous year	inventory
			(percent)	(percent)
Class on feed October 1 .....	(1,000 head)	(1,000 head)	(percent)	(percent)
Steers and steer calves .....	7,312	7,065	97	61
Heifers and heifer calves .....	4,405	4,485	102	39

**Cattle on Feed Inventory on 1,000+ Capacity Feedlots by Month – States and United States: 2020 and 2021**

State	October 1, 2020	September 1, 2021	October 1, 2021		
			Inventory	Percent of previous year	Percent of previous month
	(1,000 head)	(1,000 head)	(1,000 head)	(percent)	(percent)
Arizona .....	257	269	270	105	100
California .....	545	530	540	99	102
Colorado .....	1,110	1,080	1,130	102	105
Idaho .....	270	290	305	113	105
Iowa .....	610	590	600	98	102
Kansas .....	2,540	2,470	2,530	100	102
Minnesota .....	105	90	90	86	100
Nebraska .....	2,410	2,280	2,380	99	104
Oklahoma .....	315	275	295	94	107
South Dakota .....	190	200	200	105	100
Texas .....	2,870	2,700	2,730	95	101
Washington .....	220	195	200	91	103
Other States .....	275	265	280	102	106
United States .....	11,717	11,234	11,550	99	103

**Cattle on Feed Inventory on 1,000+ Capacity Feedlots – United States**

Million head

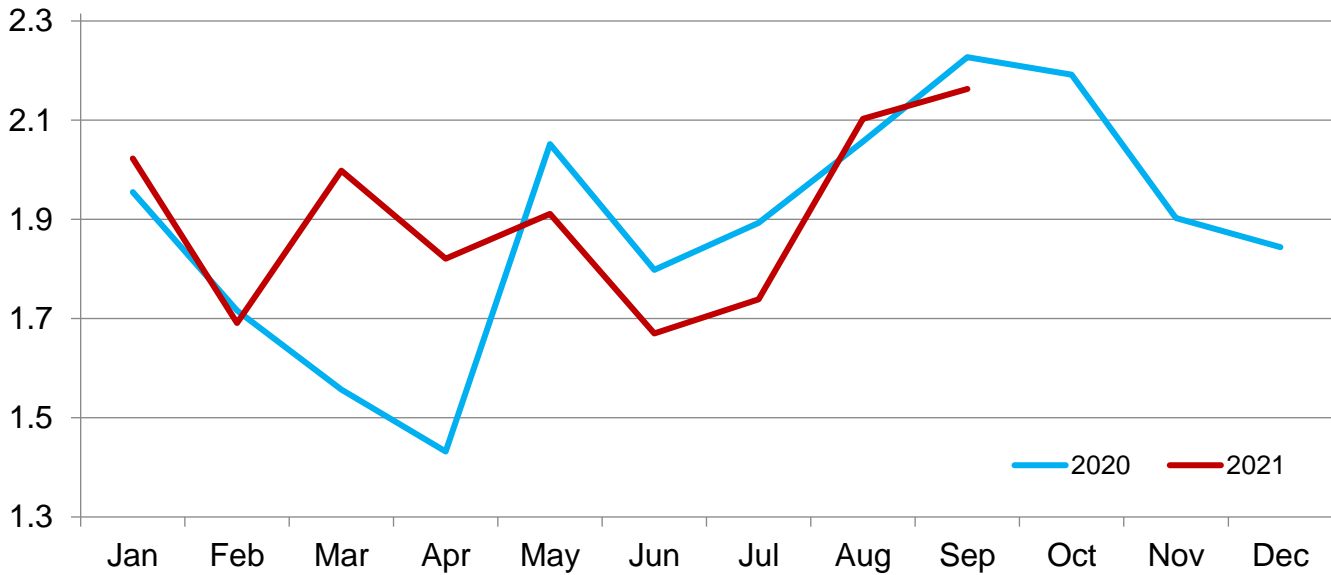


**Cattle Placed on Feed on 1,000+ Capacity Feedlots by Month – States and United States: 2020 and 2021**

State	During September 2020 (1,000 head)	During August 2021 (1,000 head)	During September 2021		
			Placements (1,000 head)	Percent of previous year (percent)	Percent of previous month (percent)
Arizona .....	16	19	21	131	111
California .....	68	52	63	93	121
Colorado .....	245	215	220	90	102
Idaho .....	54	53	57	106	108
Iowa .....	72	77	80	111	104
Kansas .....	490	530	505	103	95
Minnesota .....	19	14	19	100	136
Nebraska .....	600	560	545	91	97
Oklahoma .....	62	57	68	110	119
South Dakota .....	45	44	44	98	100
Texas .....	450	395	450	100	114
Washington .....	45	36	35	78	97
Other States .....	61	51	56	92	110
United States .....	2,227	2,103	2,163	97	103

**Cattle Placed on 1,000+ Capacity Feedlots – United States**

Million head



**Cattle Placed on Feed by Weight Group on 1,000+ Capacity Feedlots and Month – States and United States: 2020 and 2021**

State	During September 2020							
	Under 600 lbs (1,000 head)	600-699 lbs (1,000 head)	700-799 lbs (1,000 head)	800-899 lbs (1,000 head)	900+ lbs <sup>1</sup> (1,000 head)	900-999 lbs (1,000 head)	1,000+ lbs (1,000 head)	Total (1,000 head)
Colorado .....	30	30	55	65	65	(D)	(D)	245
Kansas .....	65	95	155	115	60	(D)	(D)	490
Nebraska .....	55	60	115	180	190	(D)	(D)	600
Texas .....	175	125	95	45	10	(D)	(D)	450
Other States ...	120	50	80	112	80	(D)	(D)	442
United States ..	445	360	500	517	(X)	300	105	2,227
State	During August 2021							
	Under 600 lbs (1,000 head)	600-699 lbs (1,000 head)	700-799 lbs (1,000 head)	800-899 lbs (1,000 head)	900+ lbs <sup>1</sup> (1,000 head)	900-999 lbs (1,000 head)	1,000+ lbs (1,000 head)	Total (1,000 head)
Colorado .....	35	30	45	60	45	(D)	(D)	215
Kansas .....	65	90	165	140	70	(D)	(D)	530
Nebraska .....	45	50	115	180	170	(D)	(D)	560
Texas .....	160	100	80	45	10	(D)	(D)	395
Other States ...	100	40	75	108	80	(D)	(D)	403
United States ..	405	310	480	533	(X)	275	100	2,103
State	During September 2021							
	Under 600 lbs (1,000 head)	600-699 lbs (1,000 head)	700-799 lbs (1,000 head)	800-899 lbs (1,000 head)	900+ lbs <sup>1</sup> (1,000 head)	900-999 lbs (1,000 head)	1,000+ lbs (1,000 head)	Total (1,000 head)
Colorado .....	30	25	50	60	55	(D)	(D)	220
Kansas .....	65	100	165	120	55	(D)	(D)	505
Nebraska .....	55	55	100	160	175	(D)	(D)	545
Texas .....	165	130	100	45	10	(D)	(D)	450
Other States ...	120	50	80	113	80	(D)	(D)	443
United States ..	435	360	495	498	(X)	275	100	2,163

(D) Withheld to avoid disclosing data for individual operations.

(X) Not applicable.

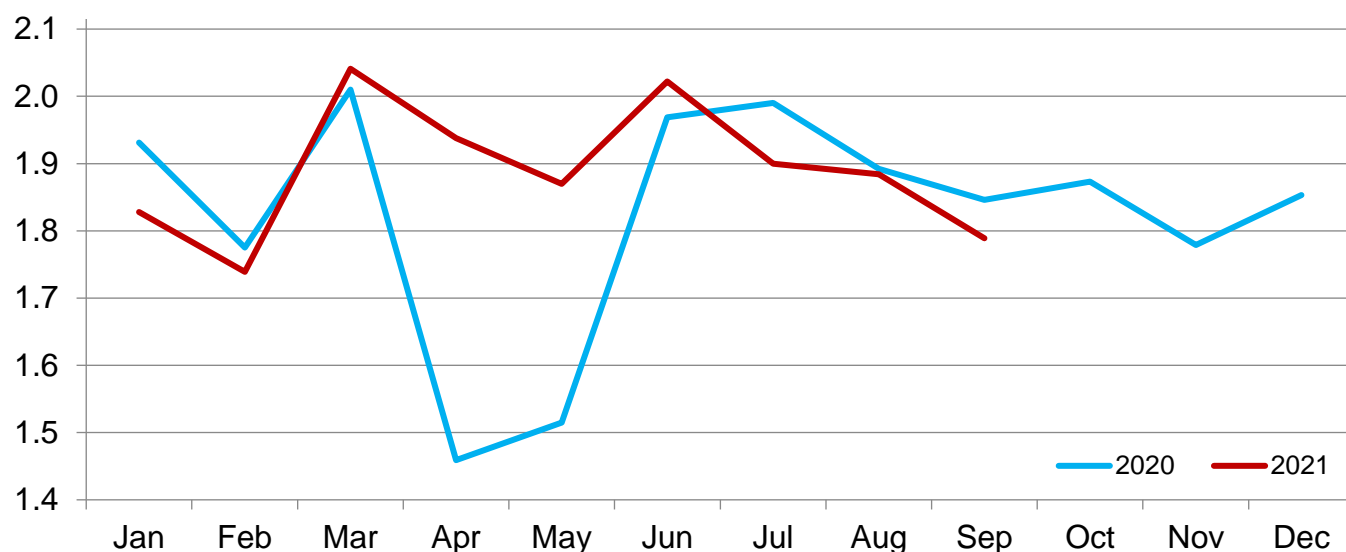
<sup>1</sup> The 900 pounds and greater weight group is the sum of 900-999 pounds and 1,000 pounds and greater weight groups.

**Cattle Marketed on 1,000+ Capacity Feedlots by Month – States and United States: 2020 and 2021**

State	During September 2020 (1,000 head)	During August 2021 (1,000 head)	During September 2021		
			Marketings (1,000 head)	Percent of previous year (percent)	Percent of previous month (percent)
Arizona .....	22	23	19	86	83
California .....	49	54	45	92	83
Colorado .....	170	170	165	97	97
Idaho .....	38	37	41	108	111
Iowa .....	70	85	67	96	79
Kansas .....	410	460	435	106	95
Minnesota .....	23	18	18	78	100
Nebraska .....	460	470	435	95	93
Oklahoma .....	56	51	47	84	92
South Dakota .....	44	37	43	98	116
Texas .....	415	400	405	98	101
Washington .....	44	30	29	66	97
Other States .....	45	49	40	89	82
United States .....	1,846	1,884	1,789	97	95

## Cattle Marketed on 1,000+ Capacity Feedlots – United States

Million head



### Cattle Other Disappearance on 1,000+ Capacity Feedlots by Month – States and United States: 2020 and 2021

State	During September 2020 (1,000 head)	During August 2021 (1,000 head)	During September 2021		
			Other disappearance (1,000 head)	Percent of previous year (percent)	Percent of previous month (percent)
Arizona .....	1	1	1	100	100
California .....	9	8	8	89	100
Colorado .....	5	5	5	100	100
Idaho .....	1	1	1	100	100
Iowa .....	2	2	3	150	150
Kansas .....	10	10	10	100	100
Minnesota .....	1	1	1	100	100
Nebraska .....	10	10	10	100	100
Oklahoma .....	1	1	1	100	100
South Dakota .....	1	2	1	100	50
Texas .....	15	15	15	100	100
Washington .....	1	1	1	100	100
Other States .....	1	2	1	100	50
United States .....	58	59	58	100	98

**Cattle on Feed by Class on 1,000+ Capacity Feedlots by Quarter – States and United States:  
2020 and 2021**

State	Steers and steer calves			Heifers and heifer calves		
	Oct 1, 2020	Jul 1, 2021	Oct 1, 2021	Oct 1, 2020	Jul 1, 2021	Oct 1, 2021
	(1,000 Head)	(1,000 Head)	(1,000 Head)	(1,000 Head)	(1,000 Head)	(1,000 Head)
Arizona .....	252	270	265	5	5	5
California .....	465	455	460	80	85	80
Colorado .....	645	595	640	465	465	490
Idaho .....	150	155	165	120	125	140
Iowa .....	460	470	460	150	130	140
Kansas .....	1,380	1,300	1,380	1,160	1,150	1,150
Minnesota .....	90	85	75	15	15	15
Nebraska .....	1,500	1,440	1,400	910	850	980
Oklahoma .....	175	155	160	140	120	135
South Dakota .....	115	125	120	75	75	80
Texas .....	1,780	1,650	1,660	1,090	1,120	1,070
Washington .....	120	105	100	100	85	100
Other States .....	180	170	180	95	90	100
United States .....	7,312	6,975	7,065	4,405	4,315	4,485

## Terms and Definitions of Cattle on Feed Estimates

**Cattle on feed** are steers and heifers being fed a ration of grain, silage, hay and/or protein supplement for slaughter market that are expected to produce a carcass that will grade select or better. It excludes cattle being "backgrounded only" for later sale as feeders or later placement in another feedlot.

**Placements** are steers and heifers put into a feedlot, fed a ration which will produce a carcass that will grade select or better, and are intended for the slaughter market.

**Marketings** are steers and heifers shipped out of feedlots to a slaughter market.

**Other disappearance** includes death loss, movement from feedlots to pasture, and shipments to other feedlots for further feeding.

## Statistical Methodology

**Survey Procedures:** During January and July all known feedlots in the United States with capacity of 1,000 or more head are surveyed to provide data for cattle on feed estimates. During the other months, all known feedlots from 16 States are surveyed. The 16 States account for approximately 98 percent of the cattle on feed in feedlots with capacity of 1,000 or more head. Individual State estimates are published monthly for 12 of the 16 States. Data collected from the remaining 4 States are used to establish the "Other States" estimates. These 4 States include Illinois, New Mexico, Oregon, and Wyoming. The "Other States" category represents all cattle on feed with a capacity of 1,000 or more head for the rest of the United States.

**Estimating Procedures:** These cattle on feed estimates were prepared by the Agricultural Statistics Board after reviewing recommendations and analysis submitted by Regional Field Offices. Regional and State survey data were reviewed for reasonableness with each other and with estimates from the previous month when establishing the current estimates.

**Revision Policy:** Revisions to previous estimates are made to improve month to month relationships. Estimates for the previous month are subject to revision in all States each month when current estimates are made. In February, all monthly estimates for the previous year, and the number of feedlots and annual marketings from two years ago are reviewed and subject to revisions. The reviews are primarily based on slaughter data, state check-off or brand data, and any other data that may have been received after the original estimate was made. Estimates will also be reviewed after data from the *Census of Agriculture* are available. No revisions will be made after that date and estimates become final.

**Reliability:** Since all 1,000+ capacity cattle on feed operators in every State are not included in the monthly survey, survey estimates are subject to sampling variability. Survey results are also subject to non-sampling errors such as omissions, duplications, and mistakes in reporting, recording, and processing the data. The effects of these errors cannot be measured directly. They are minimized through rigid quality controls in the data collection process and through a careful review of all reported data for consistency and reasonableness.

To assist users in evaluating the reliability of estimates in this report, the "**Root Mean Square Error**" is shown for selected items in the table on the following page. The "Root Mean Square Error" is a statistical measure based on past performance and is computed using the differences between first and latest estimates. The "Root Mean Square Error" for cattle on feed inventory estimates over the past 24 months is 0.0 percent. This means that chances are 2 out of 3 that the final estimate will not be above or below the current estimate of 11.6 million head by more than 0.0 percent. Chances are 9 out of 10 that the difference will not exceed 0.1 percent.

The table on the following page shows a 24 month record of the range of differences between first and latest estimates for selected items. Using estimates of number on feed as an example, changes between the first estimate and the latest estimate during the past 24 months have averaged 1,000 head, ranging from 0 to 15,000 head. During this period the initial estimate has been above the latest estimate 1 time and has been below the latest estimate 3 times. This does not imply that the initial estimate is likely to understate or overstate final inventory.



## Reliability of Monthly Cattle on Feed Estimates

[Based on data for the past 24 months]

Item	Root mean square error	90 percent confidence level	Difference between first and latest estimate				
			Average	Smallest	Largest	Months	
						Below latest	Above latest
	(percent)	(percent)	(1,000)	(1,000)	(1,000)	(number)	(number)
On feed .....	0.0	0.1	1	0	15	3	1
Placements .....	0.3	0.4	3	0	15	7	3
Marketings .....	0.2	0.4	1	0	15	4	2

## Information Contacts

Listed below are the commodity specialists in the Livestock Branch of the National Agricultural Statistics Service to contact for additional information. E-mail inquiries may be sent to [nass@usda.gov](mailto:nass@usda.gov).

Travis Averill, Chief, Livestock Branch .....	(202) 692-0069
Scott Hollis, Head, Livestock Section .....	(202) 690-2424
Sherry Bertramsen – Livestock Slaughter .....	(202) 690-8632
Ryan Cowen – Cattle, Cattle on Feed .....	(202) 720-3040
Anthony Fischer – Hogs and Pigs .....	(202) 720-3106
Logan Hartley-Sanguinett – Sheep and Goats .....	(202) 690-3236
Mike Miller – Milk Production and Milk Cows .....	(202) 720-3278
Suzanne Richards – Dairy Products .....	(202) 720-4448

## Access to NASS Reports

For your convenience, you may access NASS reports and products the following ways:

- All reports are available electronically, at no cost, on the NASS web site: [www.nass.usda.gov](http://www.nass.usda.gov)
- Both national and state specific reports are available via a free e-mail subscription. To set-up this free subscription, visit [www.nass.usda.gov](http://www.nass.usda.gov) and click on “National” or “State” in upper right corner above “search” box to create an account and select the reports you would like to receive.
- Cornell’s Mann Library has launched a new website housing NASS’s and other agency’s archived reports. The new website, <https://usda.library.cornell.edu>. All email subscriptions containing reports will be sent from the new website, <https://usda.library.cornell.edu>. To continue receiving the reports via e-mail, you will have to go to the new website, create a new account and re-subscribe to the reports. If you need instructions to set up an account or subscribe, they are located at: <https://usda.library.cornell.edu/help>. You should whitelist [notifications@usda-esmis.library.cornell.edu](mailto:notifications@usda-esmis.library.cornell.edu) in your email client to avoid the emails going into spam/junk folders.

For more information on NASS surveys and reports, call the NASS Agricultural Statistics Hotline at (800) 727-9540, 7:30 a.m. to 4:00 p.m. ET, or e-mail: [nass@usda.gov](mailto:nass@usda.gov).

The U.S. Department of Agriculture (USDA) prohibits discrimination against its customers, employees, and applicants for employment on the basis of race, color, national origin, age, disability, sex, gender identity, religion, reprisal, and where applicable, political beliefs, marital status, familial or parental status, sexual orientation, or all or part of an individual's income is derived from any public assistance program, or protected genetic information in employment or in any program or activity conducted or funded by the Department. (Not all prohibited bases will apply to all programs and/or employment activities.)

If you wish to file a Civil Rights program complaint of discrimination, complete the [USDA Program Discrimination Complaint Form](#) (PDF), found online at [www.ascr.usda.gov/filing-program-discrimination-complaint-usda-customer](http://www.ascr.usda.gov/filing-program-discrimination-complaint-usda-customer), or at any USDA office, or call (866) 632-9992 to request the form. You may also write a letter containing all of the information requested in the form. Send your completed complaint form or letter to us by mail at U.S. Department of Agriculture, Director, Office of Adjudication, 1400 Independence Avenue, S.W., Washington, D.C. 20250-9410, by fax (202) 690-7442 or email at [program.intake@usda.gov](mailto:program.intake@usda.gov).