

EXPORTING CORN THROUGH U.S. BEEF AND PORK



In 2020, the market value of beef and pork exports to

U.S. Corn = \$1.869 billion

(corn consumed by beef and pork exports at average corn price)
530.5 million bushels x \$3.52 per bushel

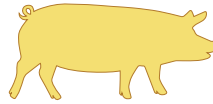


In 2020, the market value of beef and pork exports to

U.S. DDGS = \$468 million

(corn consumed by beef and pork exports at average DDGS price)
3.027 million tons x \$154.59 per ton

In 2020, beef and pork exports accounted
for 530.5 million bushels
of U.S. corn usage



In 2020 beef and pork exports contributed
11.5% of bushel value = \$0.41
at an average price of \$3.52 per bushel

U.S. beef and pork exports contributed

\$5.815 billion to U.S. corn

at \$0.41 per bushel for the 14.182 billion bushels produced in 2020



\$21.2 billion

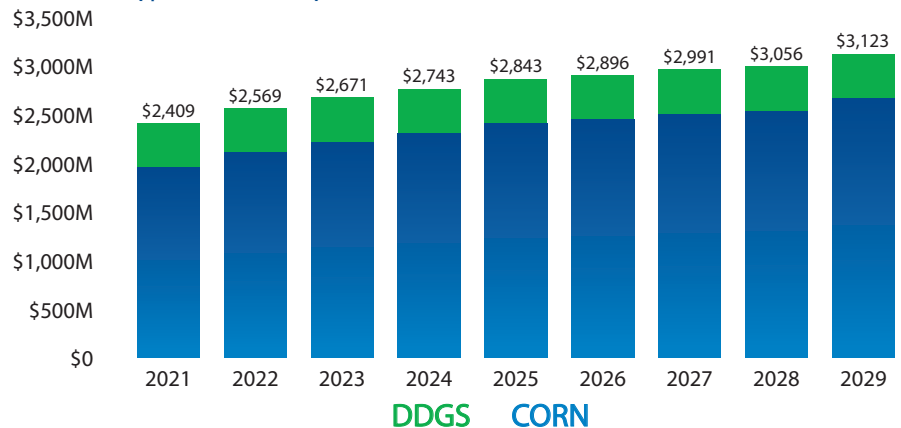
The projected market value of beef and pork exports to U.S. corn from 2021–2029



\$4.02 billion

The projected market value of beef and pork exports to U.S. DDGS from 2021–2029

U.S. BASELINE CORN AND DDGS VALUE 2021-2029 (\$MILLIONS)



Beef and pork exports accounted for **3.027 million tons of DDGS in 2020**

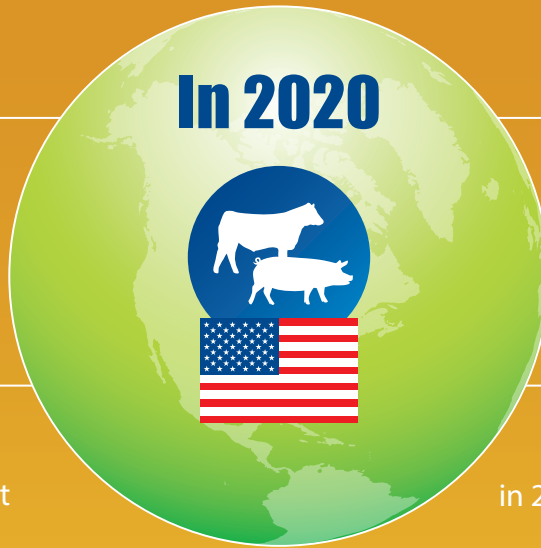
DDGS utilized by beef and pork exports in 2020 represented about **\$0.04 per gallon** to the average gross margin of an ethanol mill



14.1% of U.S. beef production was exported



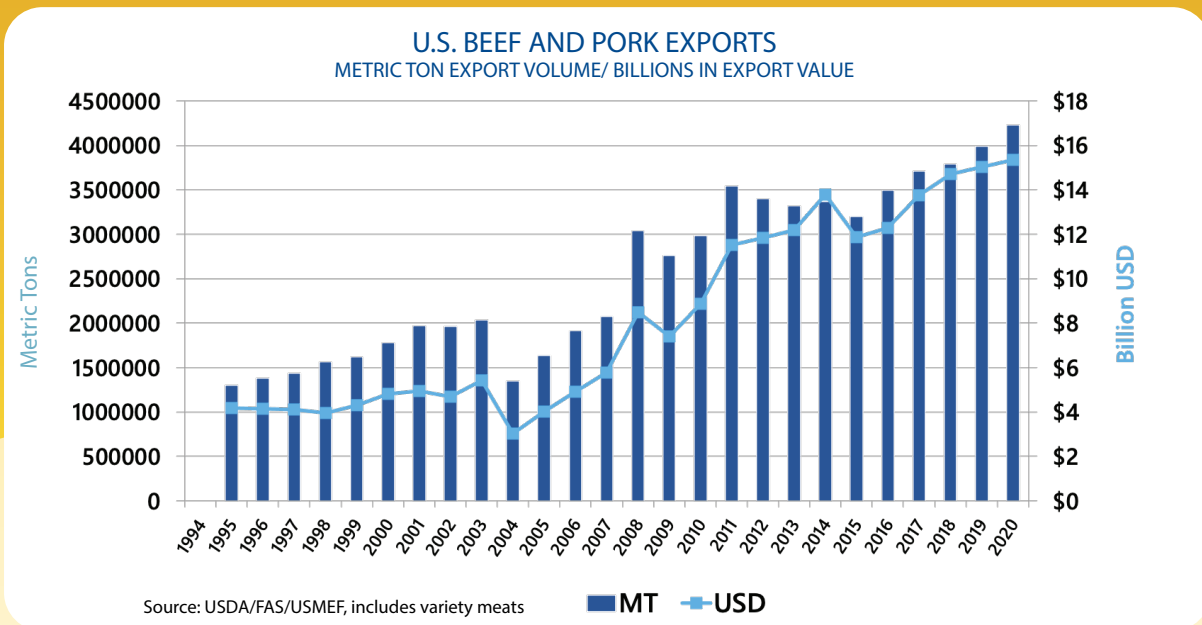
29.3% of U.S. pork production was exported



Beef export value equated to **\$309.75 per head** of fed cattle slaughtered in 2020 (export value divided by 2020 fed cattle slaughter)



Pork export value equated to **\$58.65 per head** slaughtered in 2020 (export value divided by 2020 commercial hog slaughter)



“The corn industry provides critical support for USMEF’s efforts to expand global demand for U.S. red meat,” says USMEF Senior Vice President of Industry Relations John Hinners. “This study helps quantify the return on that investment.”



The U.S. Meat Export Federation (USMEF) is a non-profit trade association that works to create new opportunities and develop existing international markets for U.S. beef, pork and lamb. USMEF is a unique collaboration of nine distinct segments of American agriculture, joining together to implement successful marketing programs for U.S. pork, beef and lamb around the world.

U.S. Meat Export Federation
1660 Lincoln Street, Suite 2800
Denver, CO 80264
Tel 303.623.MEAT (6328)
Fax 303.623.0297
www.usmef.org



For more information about this independent study conducted by World Perspectives, contact John Hinners, Erin Borrer or Jessica Spreitzer.